

Product datasheet

Anti-Nicotinic Acetylcholine Receptor alpha 3/CHRNA3 antibody [6D3A10] ab233717

★★★★★ [1 Abreviews](#) [6 Images](#)

Overview

Product name	Anti-Nicotinic Acetylcholine Receptor alpha 3/CHRNA3 antibody [6D3A10]
Description	Mouse monoclonal [6D3A10] to Nicotinic Acetylcholine Receptor alpha 3/CHRNA3
Host species	Mouse
Tested applications	Suitable for: WB, Flow Cyt, ICC/IF
Species reactivity	Reacts with: Human
Immunogen	Recombinant fragment corresponding to Human Nicotinic Acetylcholine Receptor alpha 3/CHRNA3 aa 1-250. (Expressed in E.coli). Database link: P32297
Positive control	WB: Human recombinant Nicotinic Acetylcholine Receptor alpha 3/CHRNA3 (aa32-240) protein; Nicotinic Acetylcholine Receptor alpha 3/CHRNA3 (aa32-240)-hlgGfc transfected HEK-293 cell lysate. ICC/IF: HeLa and SMMC-7721 cells. Flow: SH-SY5Y and SK-N-SH cells.
General notes	<p>The Life Science industry has been in the grips of a reproducibility crisis for a number of years. Abcam is leading the way in addressing this with our range of recombinant monoclonal antibodies and knockout edited cell lines for gold-standard validation. Please check that this product meets your needs before purchasing.</p> <p>If you have any questions, special requirements or concerns, please send us an inquiry and/or contact our Support team ahead of purchase. Recommended alternatives for this product can be found below, along with publications, customer reviews and Q&As</p>

Properties

Form	Liquid
Storage instructions	Shipped at 4°C. Store at +4°C short term (1-2 weeks). Upon delivery aliquot. Store at -20°C long term. Avoid freeze / thaw cycle.
Storage buffer	Preservative: 0.05% Sodium azide Constituent: PBS
Purity	Protein G purified
Purification notes	Purified from tissue culture supernatant.
Clonality	Monoclonal

Clone number 6D3A10
Isotype IgG1

Applications

The Abpromise guarantee Our **Abpromise guarantee** covers the use of ab233717 in the following tested applications. The application notes include recommended starting dilutions; optimal dilutions/concentrations should be determined by the end user.

Application	Abreviews	Notes
WB		1/500 - 1/2000. Predicted molecular weight: 57 kDa.
Flow Cyt		1/200 - 1/400.
ICC/IF	★★★★★ (1)	1/200 - 1/1000.

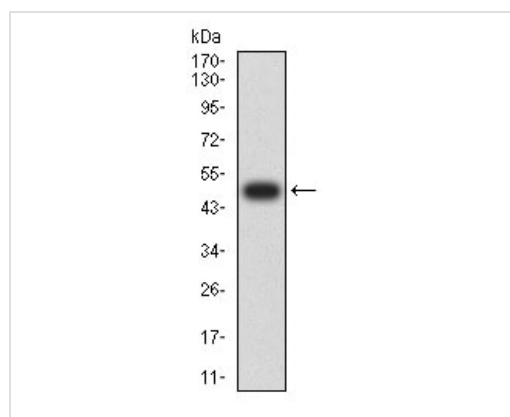
Target

Function After binding acetylcholine, the AChR responds by an extensive change in conformation that affects all subunits and leads to opening of an ion-conducting channel across the plasma membrane.

Sequence similarities Belongs to the ligand-gated ion channel (TC 1.A.9) family. Acetylcholine receptor (TC 1.A.9.1) subfamily. Alpha-3/CHRNA3 sub-subfamily.

Cellular localization Cell junction > synapse > postsynaptic cell membrane. Cell membrane.

Images

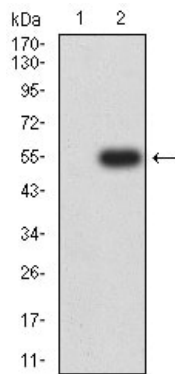


Anti-Nicotinic Acetylcholine Receptor alpha 3/CHRNA3 antibody [6D3A10] (ab233717) at 1/500 dilution + Human recombinant Nicotinic Acetylcholine Receptor alpha 3/CHRNA3 (aa32-240) protein

Predicted band size: 57 kDa

Expected MW is 50.6 kDa.

Western blot - Anti-Nicotinic Acetylcholine Receptor alpha 3/CHRNA3 antibody [6D3A10] (ab233717)



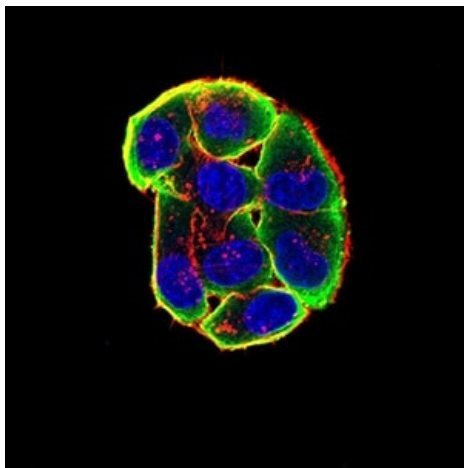
Western blot - Anti-Nicotinic Acetylcholine Receptor alpha 3/CHRNA3 antibody [6D3A10] (ab233717)

All lanes : Anti-Nicotinic Acetylcholine Receptor alpha 3/CHRNA3 antibody [6D3A10] (ab233717) at 1/500 dilution

Lane 1 : HEK-293 (human epithelial cell line from embryonic kidney) cell lysate.

Lane 2 : Nicotinic Acetylcholine Receptor alpha 3/CHRNA3 (aa32-240)-hlgGFc transfected HEK-293 cell lysate.

Predicted band size: 57 kDa

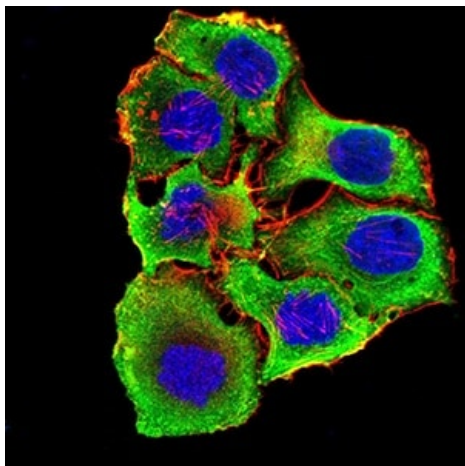


Immunocytochemistry/ Immunofluorescence - Anti-Nicotinic Acetylcholine Receptor alpha 3/CHRNA3 antibody [6D3A10] (ab233717)

HeLa (human epithelial cell line from cervix adenocarcinoma) cells stained for Nicotinic Acetylcholine Receptor alpha 3/CHRNA3 using ab233717 at 1/200 dilution in ICC/IF.

Blue: DRAQ5 fluorescent DNA dye.

Red: Actin filaments have been labeled with Alexa Fluor- 555 phalloidin.

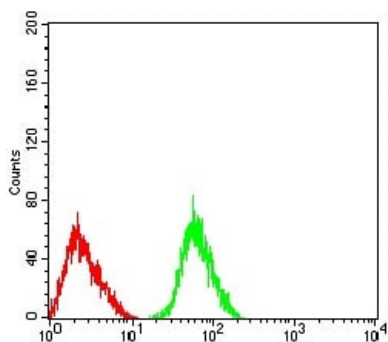


Immunocytochemistry/ Immunofluorescence - Anti-Nicotinic Acetylcholine Receptor alpha 3/CHRNA3 antibody [6D3A10] (ab233717)

SMMC-7721 (human hepatocarcinoma cell line) cells stained for Nicotinic Acetylcholine Receptor alpha 3/CHRNA3 using ab233717 at 1/200 dilution in ICC/IF.

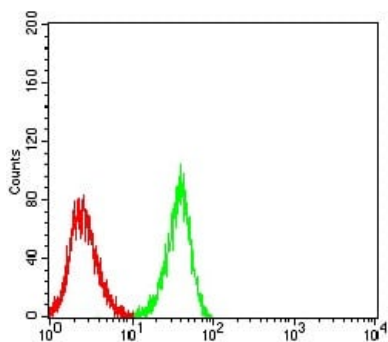
Blue: DRAQ5 fluorescent DNA dye.

Red: Actin filaments have been labeled with Alexa Fluor- 555 phalloidin.



Flow Cytometry - Anti-Nicotinic Acetylcholine Receptor alpha 3/CHRNA3 antibody [6D3A10] (ab233717)

Flow cytometric analysis of SK-N-SH (human neuroblastoma cell line) cells labeling Nicotinic Acetylcholine Receptor alpha 3/CHRNA3 using ab233717 at 1/200 dilution (green) compared with a negative control (red).



Flow Cytometry - Anti-Nicotinic Acetylcholine Receptor alpha 3/CHRNA3 antibody [6D3A10] (ab233717)

Flow cytometric analysis of SH-SY5Y (human neuroblastoma cell line from bone marrow) cells labeling Nicotinic Acetylcholine Receptor alpha using ab233717 at 1/200 dilution (green) compared to a negative control (red).

Please note: All products are "FOR RESEARCH USE ONLY. NOT FOR USE IN DIAGNOSTIC PROCEDURES"

Our Abpromise to you: Quality guaranteed and expert technical support

- Replacement or refund for products not performing as stated on the datasheet
- Valid for 12 months from date of delivery
- Response to your inquiry within 24 hours

- We provide support in Chinese, English, French, German, Japanese and Spanish
- Extensive multi-media technical resources to help you
- We investigate all quality concerns to ensure our products perform to the highest standards

If the product does not perform as described on this datasheet, we will offer a refund or replacement. For full details of the Abpromise, please visit <https://www.abcam.com/abpromise> or contact our technical team.

Terms and conditions

- Guarantee only valid for products bought direct from Abcam or one of our authorized distributors