

Anti-Nidogen 2/NID-2 antibody ab14513

★★★★★ [1 Abreviews](#) [11 References](#) [1 Image](#)

Overview

Product name	Anti-Nidogen 2/NID-2 antibody
Description	Rabbit polyclonal to Nidogen 2/NID-2
Host species	Rabbit
Tested applications	Suitable for: WB, ELISA, IHC-Fr, ICC/IF, Flow Cyt
Species reactivity	Reacts with: Mouse, Recombinant fragment
Immunogen	Recombinant full length protein. This information is proprietary to Abcam and/or its suppliers.
General notes	<p>The Life Science industry has been in the grips of a reproducibility crisis for a number of years. Abcam is leading the way in addressing this with our range of recombinant monoclonal antibodies and knockout edited cell lines for gold-standard validation. Please check that this product meets your needs before purchasing.</p> <p>If you have any questions, special requirements or concerns, please send us an inquiry and/or contact our Support team ahead of purchase. Recommended alternatives for this product can be found below, along with publications, customer reviews and Q&As</p>

Properties

Form	Liquid
Storage instructions	Shipped at 4°C. Upon delivery aliquot and store at -20°C or -80°C. Avoid repeated freeze / thaw cycles.
Purity	Whole antiserum
Clonality	Polyclonal
Isotype	IgG

Applications

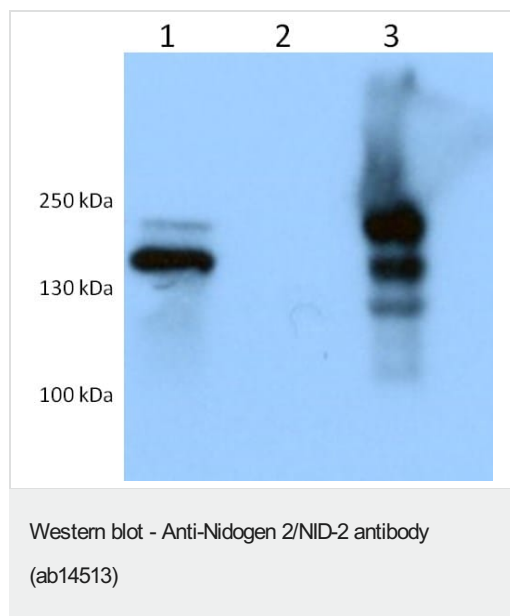
The Abpromise guarantee Our **Abpromise guarantee** covers the use of ab14513 in the following tested applications. The application notes include recommended starting dilutions; optimal dilutions/concentrations should be determined by the end user.

Application	Abreviews	Notes
WB		Use at an assay dependent concentration. Predicted molecular weight: 153 kDa.
ELISA		Use at an assay dependent concentration.
IHC-Fr		Use at an assay dependent concentration.
ICC/IF		Use at an assay dependent concentration. PubMed: 23409002
Flow Cyt		Use at an assay dependent concentration. PubMed: 23211522 ab171870 - Rabbit polyclonal IgG, is suitable for use as an isotype control with this antibody.

Target

Function	Cell adhesion glycoprotein which is widely distributed in basement membranes. Binds to collagens I and IV, to perlecan and to laminin 1. Does not bind fibulins. It probably has a role in cell-extracellular matrix interactions.
Tissue specificity	Heart, placenta and bone. Less in pancreas, kidney and skeletal muscle.
Sequence similarities	Contains 5 EGF-like domains. Contains 5 LDL-receptor class B repeats. Contains 1 NIDO domain. Contains 1 nidogen G2 beta-barrel domain. Contains 2 thyroglobulin type-1 domains.
Post-translational modifications	Highly N- and O-glycosylated.
Cellular localization	Secreted > extracellular space > extracellular matrix > basement membrane.

Images



All lanes : Anti-Nidogen 2/NID-2 antibody (ab14513) at 1/400 dilution

Lane 1 : Recombinant Nidogen 2 at 0.005 µg

Lane 2 : Recombinant Nidogen 1

Lane 3 : Protein extract of mouse femoral heads. The femoral head extract was prepared by incubating 3 mouse femoral heads (total weight 20 mg) in 200 µl buffer (0.05 M Tris; 0.15 M NaCl; 10 mM EDTA; 6 M Urea, pH 7.4) overnight. at 20 µl

Performed under reducing conditions.

Predicted band size: 153 kDa

Please note: All products are "FOR RESEARCH USE ONLY. NOT FOR USE IN DIAGNOSTIC PROCEDURES"

Our Abpromise to you: Quality guaranteed and expert technical support

- Replacement or refund for products not performing as stated on the datasheet
- Valid for 12 months from date of delivery
- Response to your inquiry within 24 hours
- We provide support in Chinese, English, French, German, Japanese and Spanish
- Extensive multi-media technical resources to help you
- We investigate all quality concerns to ensure our products perform to the highest standards

If the product does not perform as described on this datasheet, we will offer a refund or replacement. For full details of the Abpromise, please visit <https://www.abcam.com/abpromise> or contact our technical team.

Terms and conditions

- Guarantee only valid for products bought direct from Abcam or one of our authorized distributors