


Product datasheet

Anti-NKRF antibody ab168829

[5 References](#) [3 Images](#)

Overview

Product name	Anti-NKRF antibody
Description	Rabbit polyclonal to NKRF
Host species	Rabbit
Tested applications	Suitable for: IHC-P, WB, IP
Species reactivity	Reacts with: Human Predicted to work with: Rabbit, Horse, Dog, Pig, Chimpanzee, Ferret, Cynomolgus monkey, Rhesus monkey, Gorilla, Orangutan 
Immunogen	Synthetic peptide, corresponding to a region within amino acids 50-100 of Human NKRF (NP_001166959.1).
Positive control	WB: HeLa, 293 and Jurkat whole cell lysate. IP: HeLa cell lysate. IHC-P: Human non-small cell lung cancer.
General notes	<p>The Life Science industry has been in the grips of a reproducibility crisis for a number of years. Abcam is leading the way in addressing this with our range of recombinant monoclonal antibodies and knockout edited cell lines for gold-standard validation. Please check that this product meets your needs before purchasing.</p> <p>If you have any questions, special requirements or concerns, please send us an inquiry and/or contact our Support team ahead of purchase. Recommended alternatives for this product can be found below, along with publications, customer reviews and Q&As</p>

Properties

Form	Liquid
Storage instructions	Shipped at 4°C. Store at +4°C short term (1-2 weeks). Upon delivery aliquot. Store at -20°C long term.
Storage buffer	pH: 7 Preservative: 0.09% Sodium azide Constituent: 99% Tris citrate/phosphate
Purity	pH 7 to 8 Immunogen affinity purified
Purification notes	ab168829 was affinity purified using an epitope specific to NKRF immobilized on solid support.

Clonality Polyclonal
Isotype IgG

Applications

The Abpromise guarantee Our **Abpromise guarantee** covers the use of ab168829 in the following tested applications. The application notes include recommended starting dilutions; optimal dilutions/concentrations should be determined by the end user.

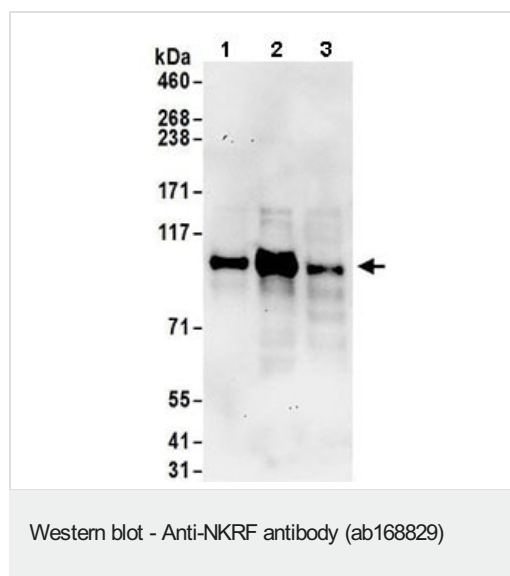
Application	Abreviews	Notes
IHC-P		1/500 - 1/2000. Perform heat mediated antigen retrieval with citrate buffer pH 6 before commencing with IHC staining protocol.
WB		1/2000 - 1/10000. Predicted molecular weight: 78 kDa.
IP		Use at 2-10 µg/mg of lysate.

Target

Relevance NKRF is a transcription factor that interacts with specific negative regulatory elements (NREs) to mediate transcriptional repression of certain NK-kappa-B-responsive genes. NKRF localizes predominantly to the nucleolus with a small fraction found in the nucleoplasm and cytoplasm. o involved in the regulation of IL-8 transcription.

Cellular localization Nuclear

Images



All lanes : Anti-NKRF antibody (ab168829) at 0.1 µg/ml

Lane 1 : HeLa whole cell lysate

Lane 2 : 293T whole cell lysate

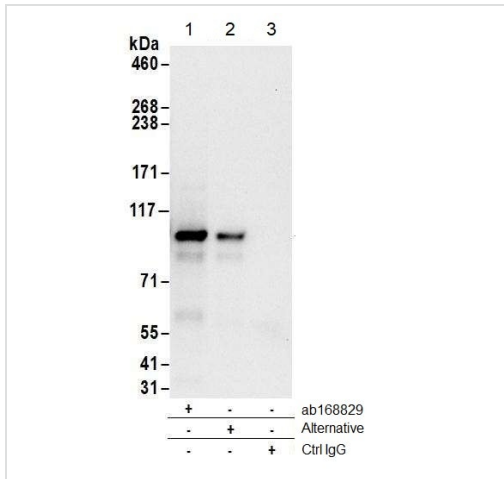
Lane 3 : Jurkat whole cell lysate

Lysates/proteins at 50 µg per lane.

Developed using the ECL technique.

Predicted band size: 78 kDa

Exposure time: 30 seconds

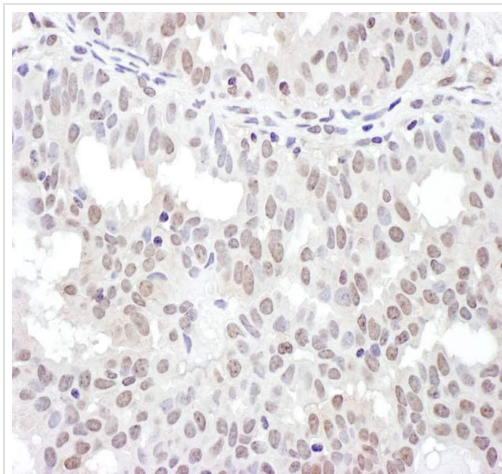


Immunoprecipitation - Anti-NKRF antibody
(ab168829)

ab168829 immunoprecipitating NKRF in human HeLa whole cell lysate. 1 mg whole cell lysate was incubated with primary antibody (6 ug/ml lysate) for immunoprecipitation. For blotting immunoprecipitated NKRF ab168829 was used at 1 ug/ml. Detection was by chemiluminescence with an exposure time of 10 seconds.

All lanes :

All lanes : HeLa (Human cervix adenocarcinoma epithelial cell) whole cell lysate (1 mg for IP; 20% of IP loaded)



Immunohistochemistry (Formalin/PFA-fixed paraffin-embedded sections) - Anti-NKRF antibody
(ab168829)

Immunohistochemistry analysis of formalin-fixed, paraffin-embedded human non-small cell lung cancer tissue labeling NKRF with ab168829 at a 1/1000 dilution.

Please note: All products are "FOR RESEARCH USE ONLY. NOT FOR USE IN DIAGNOSTIC PROCEDURES"

Our Abpromise to you: Quality guaranteed and expert technical support

- Replacement or refund for products not performing as stated on the datasheet
- Valid for 12 months from date of delivery
- Response to your inquiry within 24 hours
- We provide support in Chinese, English, French, German, Japanese and Spanish
- Extensive multi-media technical resources to help you
- We investigate all quality concerns to ensure our products perform to the highest standards

If the product does not perform as described on this datasheet, we will offer a refund or replacement. For full details of the Abpromise, please visit <https://www.abcam.com/abpromise> or contact our technical team.

Terms and conditions

- Guarantee only valid for products bought direct from Abcam or one of our authorized distributors