




## Product datasheet

# Anti-NLE1/nle antibody ab230212

[3 Images](#)

### Overview

---

<b>Product name</b>	Anti-NLE1/nle antibody
<b>Description</b>	Rabbit polyclonal to NLE 1/nle
<b>Host species</b>	Rabbit
<b>Tested applications</b>	<b>Suitable for:</b> IHC-P, WB
<b>Species reactivity</b>	<b>Reacts with:</b> Human <b>Predicted to work with:</b> Mouse, Cow, Orangutan 
<b>Immunogen</b>	Recombinant fragment corresponding to Human NLE 1/nle aa 200 to the C-terminus. Database link: <a href="#">Q9NVX2</a>  <a href="#">Run BLAST with</a>  <a href="#">Run BLAST with</a>
<b>Positive control</b>	WB: PC-3 whole cell lysate. IHC-P: Human gastric cancer and small intestine tissues.
<b>General notes</b>	<p>The Life Science industry has been in the grips of a reproducibility crisis for a number of years. Abcam is leading the way in addressing this with our range of recombinant monoclonal antibodies and knockout edited cell lines for gold-standard validation. Please check that this product meets your needs before purchasing.</p> <p>If you have any questions, special requirements or concerns, please send us an inquiry and/or contact our Support team ahead of purchase. Recommended alternatives for this product can be found below, along with publications, customer reviews and Q&amp;As</p>

### Properties

---

<b>Form</b>	Liquid
<b>Storage instructions</b>	Shipped at 4°C. Store at +4°C short term (1-2 weeks). Upon delivery aliquot. Store at -20°C long term. Avoid freeze / thaw cycle.
<b>Storage buffer</b>	pH: 7.30 Preservative: 0.02% Sodium azide Constituents: PBS, 50% Glycerol (glycerin, glycerine)
<b>Purity</b>	Immunogen affinity purified
<b>Clonality</b>	Polyclonal
<b>Isotype</b>	IgG

## Applications

**The Abpromise guarantee** Our **Abpromise guarantee** covers the use of ab230212 in the following tested applications. The application notes include recommended starting dilutions; optimal dilutions/concentrations should be determined by the end user.

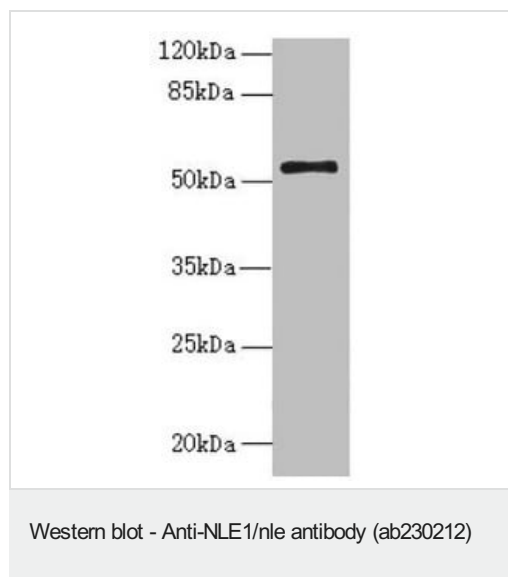
Application	Abreviews	Notes
IHC-P		1/20 - 1/200.
WB		1/1000 - 1/5000. Detects a band of approximately 53 kDa (predicted molecular weight: 53 kDa).

## Target

**Sequence similarities** Belongs to the NLE1/RSA4 family.  
Contains 8 WD repeats.

**Cellular localization** Nucleus > nucleolus.

## Images



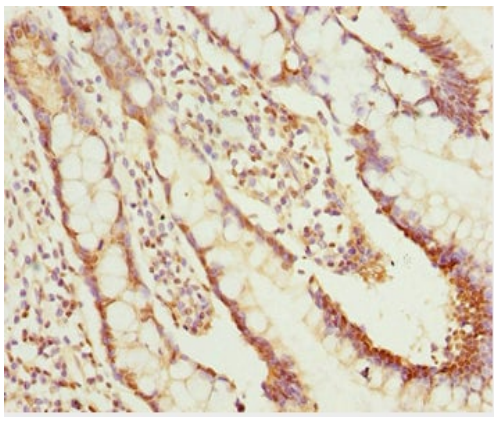
Anti-NLE1/nle antibody (ab230212) at 1/1000 dilution + PC-3 (human prostate adenocarcinoma cell line) whole cell lysate

### Secondary

Goat polyclonal to rabbit IgG at 1/10000 dilution

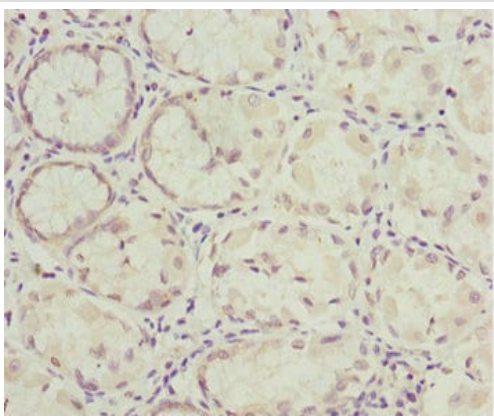
**Predicted band size:** 53 kDa

**Observed band size:** 53 kDa



Paraffin-embedded human small intestine tissue stained for NLE1/nle using ab230212 at 1/100 dilution in immunohistochemical analysis.

Immunohistochemistry (Formalin/PFA-fixed paraffin-embedded sections) - Anti-NLE1/nle antibody (ab230212)



Paraffin-embedded human gastric cancer tissue stained for NLE1/nle using ab230212 at 1/100 dilution in immunohistochemical analysis.

Immunohistochemistry (Formalin/PFA-fixed paraffin-embedded sections) - Anti-NLE1/nle antibody (ab230212)

**Please note:** All products are "FOR RESEARCH USE ONLY. NOT FOR USE IN DIAGNOSTIC PROCEDURES"

### **Our Abpromise to you: Quality guaranteed and expert technical support**

---

- Replacement or refund for products not performing as stated on the datasheet
- Valid for 12 months from date of delivery
- Response to your inquiry within 24 hours
  
- We provide support in Chinese, English, French, German, Japanese and Spanish
- Extensive multi-media technical resources to help you
- We investigate all quality concerns to ensure our products perform to the highest standards

If the product does not perform as described on this datasheet, we will offer a refund or replacement. For full details of the Abpromise, please visit <https://www.abcam.com/abpromise> or contact our technical team.

## Terms and conditions

---

- Guarantee only valid for products bought direct from Abcam or one of our authorized distributors