

## Product datasheet

# Anti-NLRP10 antibody ab105407

[3 Images](#)

### Overview

---

<b>Product name</b>	Anti-NLRP10 antibody
<b>Description</b>	Rabbit polyclonal to NLRP10
<b>Host species</b>	Rabbit
<b>Specificity</b>	At least two isoforms of NLRP10 are known to exist; this antibody will recognize both. The antibody is predicted to not cross-react with other NLRP family members.
<b>Tested applications</b>	<b>Suitable for:</b> IHC-P, ICC/IF, WB
<b>Species reactivity</b>	<b>Reacts with:</b> Human
<b>Immunogen</b>	A 14 amino acid peptide from near the N terminus of Human NLRP10 (NP_789791).
<b>Positive control</b>	Human brain tissue lysate
<b>General notes</b>	<p>The Life Science industry has been in the grips of a reproducibility crisis for a number of years. Abcam is leading the way in addressing this with our range of recombinant monoclonal antibodies and knockout edited cell lines for gold-standard validation. Please check that this product meets your needs before purchasing.</p> <p>If you have any questions, special requirements or concerns, please send us an inquiry and/or contact our Support team ahead of purchase. Recommended alternatives for this product can be found below, along with publications, customer reviews and Q&amp;As</p>

### Properties

---

<b>Form</b>	Liquid
<b>Storage instructions</b>	Shipped at 4°C. Store at +4°C.
<b>Storage buffer</b>	pH: 7.2 Preservative: 0.02% Sodium azide Constituent: PBS
<b>Purity</b>	Immunogen affinity purified
<b>Clonality</b>	Polyclonal
<b>Isotype</b>	IgG

### Applications

---

## The Abpromise guarantee

Our **Abpromise guarantee** covers the use of ab105407 in the following tested applications.

The application notes include recommended starting dilutions; optimal dilutions/concentrations should be determined by the end user.

Application	Abreviews	Notes
IHC-P		Use at an assay dependent concentration.
ICC/IF		Use a concentration of 20 µg/ml.
WB		Use a concentration of 1 - 2 µg/ml. Predicted molecular weight: 75 kDa.

## Target

### Function

Inhibits CASP1/caspase-1-dependent IL1B secretion and PYCARD-mediated apoptosis, but not that induced by FAS or BID.

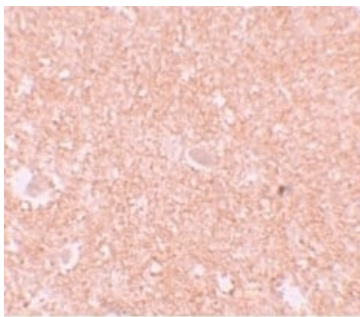
### Tissue specificity

Widely expressed with highest levels in heart, brain and skeletal muscle.

### Sequence similarities

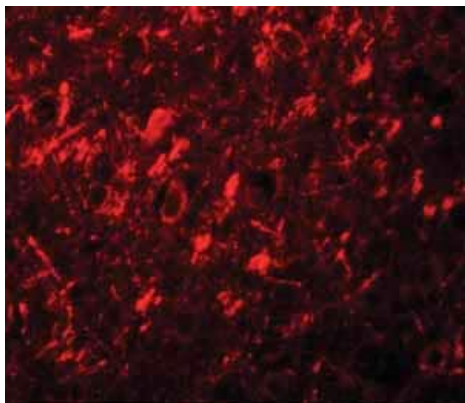
Belongs to the NLRP family.  
Contains 1 DAPIN domain.  
Contains 1 NACHT domain.

## Images



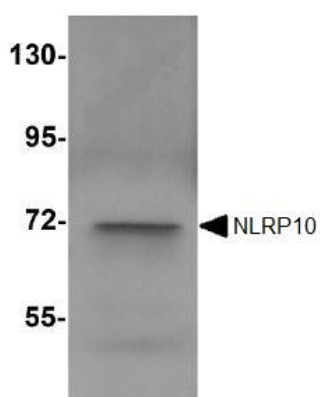
Immunohistochemistry of Human brain tissue with ab105407 at 10 µg/mL.

Immunohistochemistry (Formalin/PFA-fixed paraffin-embedded sections) - Anti-NLRP10 antibody (ab105407)



Immunofluorescence of NLRP10 in Human brain tissue with ab105407 at 20 ug/mL.

Immunocytochemistry/ Immunofluorescence - Anti-NLRP10 antibody (ab105407)



Anti-NLRP10 antibody (ab105407) at 1 µg/ml + Human brain tissue lysate at 15 µg

**Predicted band size:** 75 kDa

Western blot - Anti-NLRP10 antibody (ab105407)

**Please note:** All products are "FOR RESEARCH USE ONLY. NOT FOR USE IN DIAGNOSTIC PROCEDURES"

### Our Abpromise to you: Quality guaranteed and expert technical support

- Replacement or refund for products not performing as stated on the datasheet
- Valid for 12 months from date of delivery
- Response to your inquiry within 24 hours
- We provide support in Chinese, English, French, German, Japanese and Spanish
- Extensive multi-media technical resources to help you
- We investigate all quality concerns to ensure our products perform to the highest standards

If the product does not perform as described on this datasheet, we will offer a refund or replacement. For full details of the Abpromise, please visit <https://www.abcam.com/abpromise> or contact our technical team.

### Terms and conditions

- Guarantee only valid for products bought direct from Abcam or one of our authorized distributors