

Product datasheet

Anti-NLRP11 antibody ab105408

[1 References](#) [3 Images](#)

Overview

Product name	Anti-NLRP11 antibody
Description	Rabbit polyclonal to NLRP11
Host species	Rabbit
Specificity	At least three isoforms of NLRP11 are known to exist; this antibody will recognize all of them. NLRP11 antibody is predicted to not cross-react with other NLRP family members
Tested applications	Suitable for: ICC/IF, WB
Species reactivity	Reacts with: Human
Immunogen	A 15 amino acid peptide from near the C terminus of Human NLRP11 (NP_659444).
Positive control	HeLa cell lysate
General notes	<p>The Life Science industry has been in the grips of a reproducibility crisis for a number of years. Abcam is leading the way in addressing this with our range of recombinant monoclonal antibodies and knockout edited cell lines for gold-standard validation. Please check that this product meets your needs before purchasing.</p> <p>If you have any questions, special requirements or concerns, please send us an inquiry and/or contact our Support team ahead of purchase. Recommended alternatives for this product can be found below, along with publications, customer reviews and Q&As</p>

Properties

Form	Liquid
Storage instructions	Shipped at 4°C. Store at +4°C.
Storage buffer	pH: 7.2 Preservative: 0.02% Sodium azide Constituent: PBS
Purity	Immunogen affinity purified
Clonality	Polyclonal
Isotype	IgG

Applications

The Abpromise guarantee

Our **Abpromise guarantee** covers the use of ab105408 in the following tested applications.

The application notes include recommended starting dilutions; optimal dilutions/concentrations should be determined by the end user.

Application	Abreviews	Notes
ICC/IF		Use a concentration of 20 µg/ml.
WB		Use a concentration of 1 - 2 µg/ml. Predicted molecular weight: 118 kDa.

Target

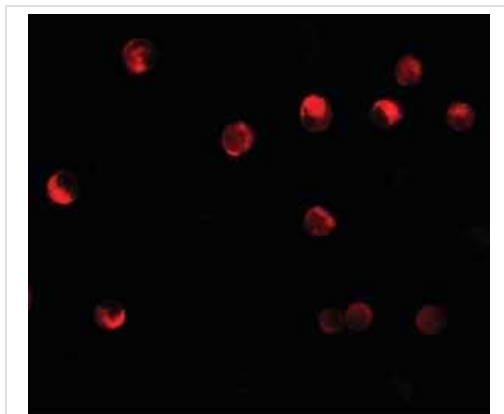
Function

Involved in inflammation.

Sequence similarities

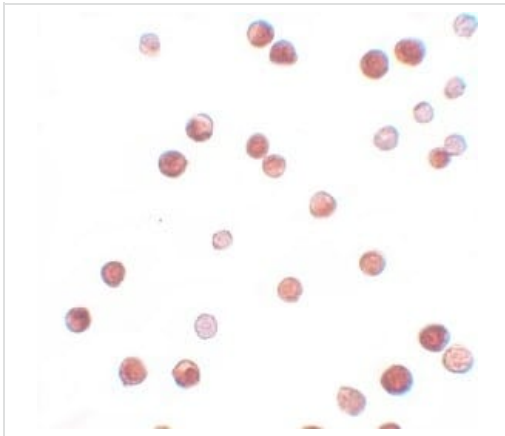
Belongs to the NLRP family.
Contains 1 DAPIN domain.
Contains 6 LRR (leucine-rich) repeats.
Contains 1 NACHT domain.

Images



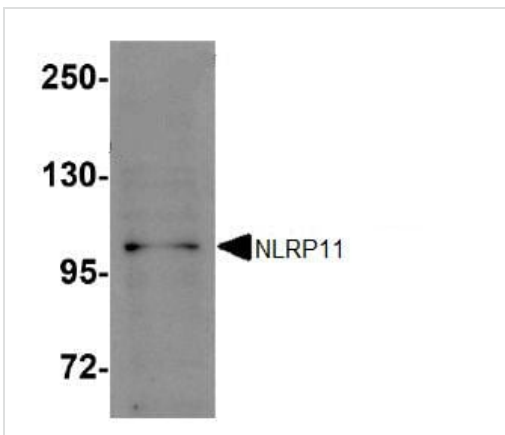
Immunofluorescence of NLRP11 in HeLa cells with **ab105407** at 20 µg/mL.

Immunocytochemistry/ Immunofluorescence - Anti-NLRP11 antibody (ab105408)



Immunocytochemistry of HeLa cells with ab105408 at 2.5 µg/mL.

Immunocytochemistry/ Immunofluorescence - Anti-NLRP11 antibody (ab105408)



Anti-NLRP11 antibody (ab105408) at 1 µg/ml + HeLa cell lysate at 15 µg

Predicted band size: 118 kDa

Western blot - Anti-NLRP11 antibody (ab105408)

Please note: All products are "FOR RESEARCH USE ONLY. NOT FOR USE IN DIAGNOSTIC PROCEDURES"

Our Abpromise to you: Quality guaranteed and expert technical support

- Replacement or refund for products not performing as stated on the datasheet
- Valid for 12 months from date of delivery
- Response to your inquiry within 24 hours
- We provide support in Chinese, English, French, German, Japanese and Spanish
- Extensive multi-media technical resources to help you
- We investigate all quality concerns to ensure our products perform to the highest standards

If the product does not perform as described on this datasheet, we will offer a refund or replacement. For full details of the Abpromise, please visit <https://www.abcam.com/abpromise> or contact our technical team.

Terms and conditions

- Guarantee only valid for products bought direct from Abcam or one of our authorized distributors