

Anti-NLRP7 antibody ab117732

★★★★★ [1 Abreviews](#) [1 Image](#)

Overview

Product name	Anti-NLRP7 antibody
Description	Rabbit polyclonal to NLRP7
Host species	Rabbit
Tested applications	Suitable for: IHC-P, ELISA, WB
Species reactivity	Reacts with: Human
Immunogen	Synthetic peptide conjugated to KLH, corresponding to a region from the N-terminus of Human NLRP7.
Positive control	Human Spleen tissue
General notes	<p>The Life Science industry has been in the grips of a reproducibility crisis for a number of years. Abcam is leading the way in addressing this with our range of recombinant monoclonal antibodies and knockout edited cell lines for gold-standard validation. Please check that this product meets your needs before purchasing.</p> <p>If you have any questions, special requirements or concerns, please send us an inquiry and/or contact our Support team ahead of purchase. Recommended alternatives for this product can be found below, along with publications, customer reviews and Q&As</p>

Properties

Form	Liquid
Storage instructions	Shipped at 4°C. Store at +4°C short term (1-2 weeks). Store at -20°C or -80°C. Avoid freeze / thaw cycle.
Storage buffer	<p>pH: 7.4</p> <p>Preservative: 0.02% Sodium azide</p> <p>Constituent: 99% PBS</p>
Purity	Immunogen affinity purified
Clonality	Polyclonal
Isotype	IgG

Applications

The Abpromise guarantee

Our **Abpromise guarantee** covers the use of ab117732 in the following tested applications.

The application notes include recommended starting dilutions; optimal dilutions/concentrations should be determined by the end user.

Application	Abreviews	Notes
IHC-P		Use a concentration of 5 µg/ml.
ELISA		Use at an assay dependent concentration.
WB	★★★★★ (1)	Use at an assay dependent concentration. Predicted molecular weight: 111 kDa.

Target

Function

Inhibits CASP1/caspase-1-dependent IL1B secretion.

Tissue specificity

Expressed in numerous tissues including uterus and ovary, with low levels in heart and brain. Not detected in skeletal muscle.

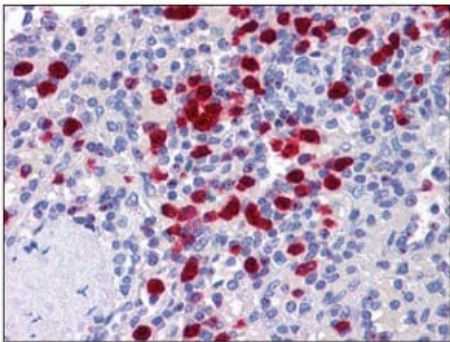
Involvement in disease

Defects in NLRP7 are the cause of hydatidiform mole (HYDM) [MIM:231090]. HYDM is an abnormal human pregnancy with no embryo and cystic degeneration of placental villi.

Sequence similarities

Belongs to the NLRP family.
Contains 1 DAPIN domain.
Contains 9 LRR (leucine-rich) repeats.
Contains 1 NACHT domain.

Images



Immunohistochemistry (Formalin/PFA-fixed paraffin-embedded sections) - Anti-NLRP7 antibody (ab117732)

ab117732 at 5 µg/ml staining NLRP7 in Formalin-Fixed, Paraffin-Embedded Human Spleen.

Please note: All products are "FOR RESEARCH USE ONLY. NOT FOR USE IN DIAGNOSTIC PROCEDURES"

Our Abpromise to you: Quality guaranteed and expert technical support

- Replacement or refund for products not performing as stated on the datasheet

- Valid for 12 months from date of delivery
- Response to your inquiry within 24 hours
- We provide support in Chinese, English, French, German, Japanese and Spanish
- Extensive multi-media technical resources to help you
- We investigate all quality concerns to ensure our products perform to the highest standards

If the product does not perform as described on this datasheet, we will offer a refund or replacement. For full details of the Abpromise, please visit <https://www.abcam.com/abpromise> or contact our technical team.

Terms and conditions

- Guarantee only valid for products bought direct from Abcam or one of our authorized distributors