


## Product datasheet

### Anti-NMBR antibody [EPR6880] ab134141

Recombinant RabMAb

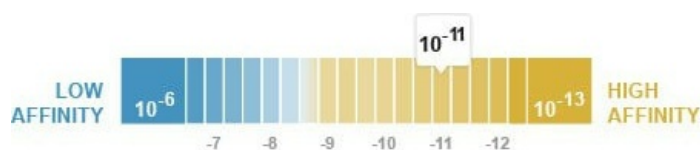
[2 References](#) [3 Images](#)

#### Overview

Product name	Anti-NMBR antibody [EPR6880]
Description	Rabbit monoclonal [EPR6880] to NMBR
Host species	Rabbit
Tested applications	<b>Suitable for:</b> WB <b>Unsuitable for:</b> Flow Cyt, ICC/IF or IHC-P
Species reactivity	<b>Reacts with:</b> Human <b>Predicted to work with:</b> Mouse, Rat 
Immunogen	Synthetic peptide within Human NMBR aa 1-100. The exact sequence is proprietary.
Positive control	A549, Caco2 and 293T cell lysates.
General notes	This product is a recombinant monoclonal antibody, which offers several advantages including: <ul style="list-style-type: none"> <li>- High batch-to-batch consistency and reproducibility</li> <li>- Improved sensitivity and specificity</li> <li>- Long-term security of supply</li> <li>- Animal-free production</li> </ul> For more information <a href="#">see here</a> . Our RabMAb <sup>®</sup> technology is a patented hybridoma-based technology for making rabbit monoclonal antibodies. For details on our patents, please refer to <a href="#">RabMAb<sup>®</sup> patents</a> .

#### Properties

Form	Liquid
Storage instructions	Shipped at 4°C. Store at -20°C.
Dissociation constant (K <sub>D</sub> )	K <sub>D</sub> = 2.15 x 10 <sup>-11</sup> M



[Learn more about K<sub>D</sub>](#)

Storage buffer	pH: 7.2
----------------	---------

	Preservative: 0.01% Sodium azide
	Constituents: 9% PBS, 40% Glycerol (glycerin, glycerine), 0.05% BSA, 50% Tissue culture supernatant
<b>Purity</b>	Protein A purified
<b>Clonality</b>	Monoclonal
<b>Clone number</b>	EPR6880
<b>Isotype</b>	IgG

## Applications

**The Abpromise guarantee** Our **Abpromise guarantee** covers the use of ab134141 in the following tested applications. The application notes include recommended starting dilutions; optimal dilutions/concentrations should be determined by the end user.

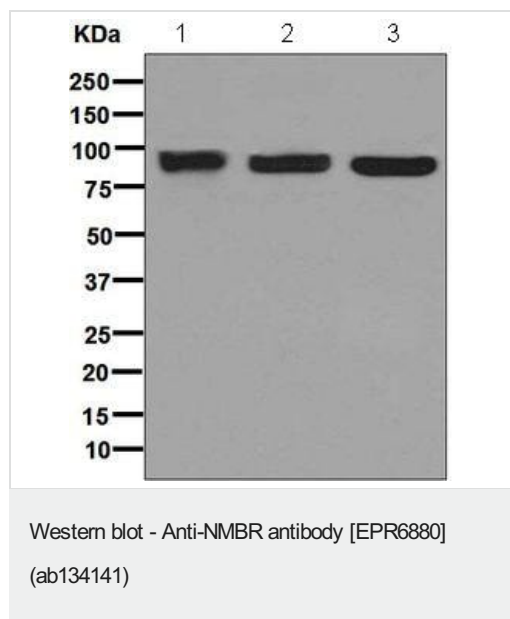
Application	Abreviews	Notes
<b>WB</b>		1/10000 - 1/50000. Predicted molecular weight: 43 kDa.

**Application notes** Is unsuitable for Flow Cyt, ICC/IF or IHC-P.

## Target

<b>Function</b>	Receptor for neuromedin-B.
<b>Sequence similarities</b>	Belongs to the G-protein coupled receptor 1 family.
<b>Cellular localization</b>	Cell membrane.

## Images



**All lanes** : Anti-NMBR antibody [EPR6880] (ab134141) at 1/10000 dilution

**Lane 1** : A549 cell lysate

**Lane 2** : Caco2 cell lysate

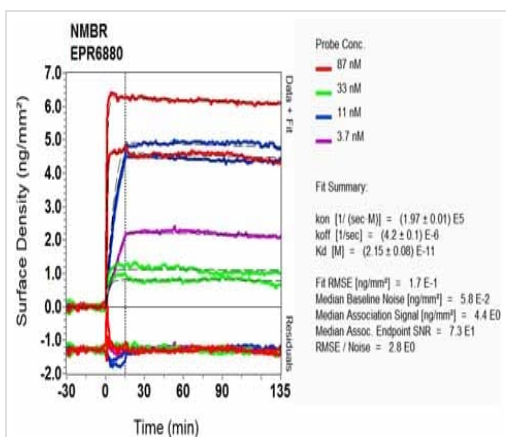
**Lane 3** : 293T cell lysate

Lysates/proteins at 10 µg per lane.

### Secondary

**All lanes** : Goat Anti-rabbit HRP at 1/2000 dilution

**Predicted band size:** 43 kDa



OI-RD Scanning - Anti-NMBR antibody [EPR6880]  
(ab134141)

Equilibrium disassociation constant ( $K_D$ )

Learn more about  $K_D$

[Click here to learn more about  \$K\_D\$](#)

### Why choose a recombinant antibody?



**Research with confidence**  
Consistent and reproducible results



**Long-term and scalable supply**  
Recombinant technology



**Success from the first experiment**  
Confirmed specificity



**Ethical standards compliant**  
Animal-free production

Anti-NMBR antibody [EPR6880] (ab134141)

**Please note:** All products are "FOR RESEARCH USE ONLY. NOT FOR USE IN DIAGNOSTIC PROCEDURES"

### Our Abpromise to you: Quality guaranteed and expert technical support

- Replacement or refund for products not performing as stated on the datasheet
- Valid for 12 months from date of delivery
- Response to your inquiry within 24 hours
- We provide support in Chinese, English, French, German, Japanese and Spanish
- Extensive multi-media technical resources to help you
- We investigate all quality concerns to ensure our products perform to the highest standards

If the product does not perform as described on this datasheet, we will offer a refund or replacement. For full details of the Abpromise, please visit <https://www.abcam.com/abpromise> or contact our technical team.

## Terms and conditions

---

- Guarantee only valid for products bought direct from Abcam or one of our authorized distributors