




Product datasheet

Anti-NME6 antibody ab233442

8 Images

Overview

Product name	Anti-NME6 antibody
Description	Rabbit polyclonal to NME6
Host species	Rabbit
Tested applications	Suitable for: WB, IHC-P
Species reactivity	Reacts with: Rat Predicted to work with: Mouse, Human 
Immunogen	Recombinant fragment (His-T7-tag) corresponding to Rat NME6 aa 1 to the C-terminus. Expressed in E.coli. N-terminal tags. Database link: R9PXW5  Run BLAST with  Run BLAST with
Positive control	WB: Recombinant rat NME6 protein; Rat spleen tissue lysate. IHC-P: Rat cerebrum, liver, kidney, stomach, testis and lung tissue.
General notes	The Life Science industry has been in the grips of a reproducibility crisis for a number of years. Abcam is leading the way in addressing this with our range of recombinant monoclonal antibodies and knockout edited cell lines for gold-standard validation. Please check that this product meets your needs before purchasing. If you have any questions, special requirements or concerns, please send us an inquiry and/or contact our Support team ahead of purchase. Recommended alternatives for this product can be found below, along with publications, customer reviews and Q&As

Properties

Form	Liquid
Storage instructions	Shipped at 4°C. Store at +4°C short term (1-2 weeks). Upon delivery aliquot. Store at -20°C long term. Avoid freeze / thaw cycle.
Storage buffer	pH: 7.40 Preservative: 0.02% Sodium azide Constituents: 44.12% PBS, 55.77% Glycerol (glycerin, glycerine)
Purity	Immunogen affinity purified
Purification notes	Antigen-specific affinity chromatography followed by Protein A affinity chromatography.
Clonality	Polyclonal

Isotype

IgG

Applications

The Abpromise guarantee

Our **Abpromise guarantee** covers the use of ab233442 in the following tested applications.

The application notes include recommended starting dilutions; optimal dilutions/concentrations should be determined by the end user.

Application	Abreviews	Notes
WB		Use a concentration of 0.5 - 5 µg/ml. Predicted molecular weight: 20 kDa.
IHC-P		Use a concentration of 5 - 20 µg/ml.

Target

Function

Major role in the synthesis of nucleoside triphosphates other than ATP. The ATP gamma phosphate is transferred to the NDP beta phosphate via a ping-pong mechanism, using a phosphorylated active-site intermediate. Inhibitor of p53-induced apoptosis.

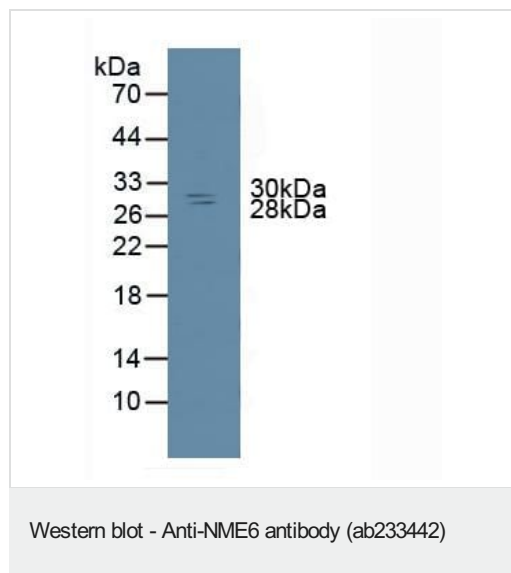
Tissue specificity

Expressed at a moderately low level in many tissues. Most abundant in kidney, prostate, ovary, intestine, and spleen.

Sequence similarities

Belongs to the NDK family.

Images

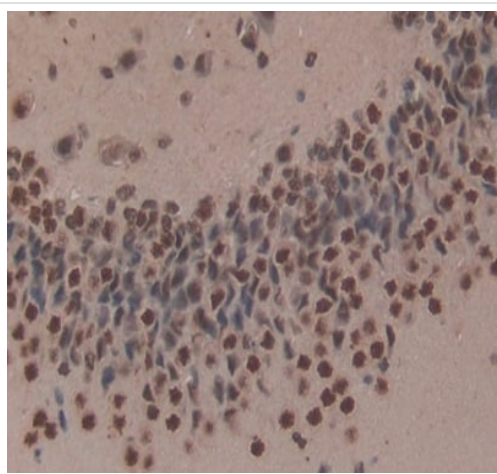


Anti-NME6 antibody (ab233442) at 3 µg/ml + Rat spleen tissue lysate

Secondary

HRP-linked Guinea pig anti-rabbit at 1/2000 dilution

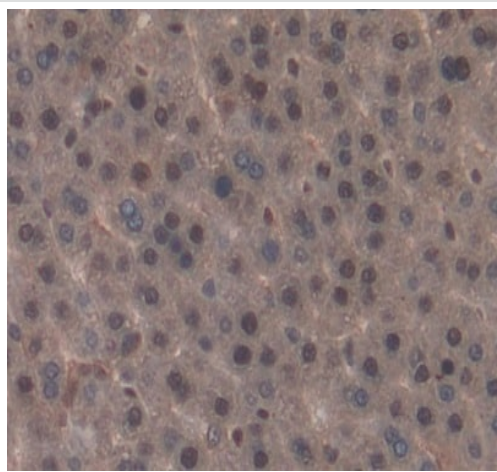
Predicted band size: 20 kDa



Immunohistochemistry (Formalin/PFA-fixed paraffin-embedded sections) - Anti-NME6 antibody (ab233442)

Formalin-fixed, paraffin-embedded rat cerebrum tissue stained for NME6 using ab233442 at 20 $\mu\text{g/ml}$ in immunohistochemical analysis.

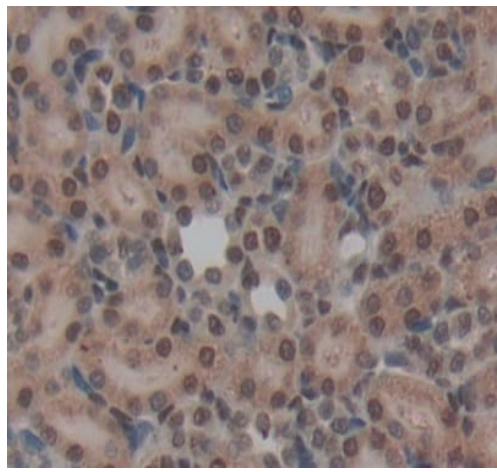
Secondary used: HRP-Linked Goat anti-Rabbit IgG at 2 $\mu\text{g/ml}$. DAB staining.



Immunohistochemistry (Formalin/PFA-fixed paraffin-embedded sections) - Anti-NME6 antibody (ab233442)

Formalin-fixed, paraffin-embedded rat liver tissue stained for NME6 using ab233442 at 20 $\mu\text{g/ml}$ in immunohistochemical analysis.

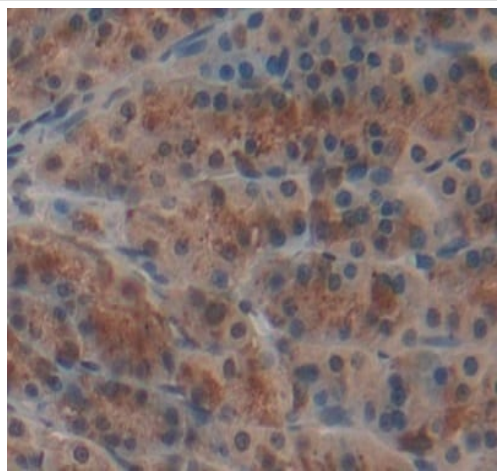
Secondary used: HRP-Linked Goat anti-Rabbit IgG at 2 $\mu\text{g/ml}$. DAB staining.



Immunohistochemistry (Formalin/PFA-fixed paraffin-embedded sections) - Anti-NME6 antibody (ab233442)

Formalin-fixed, paraffin-embedded rat kidney tissue stained for NME6 using ab233442 at 20 $\mu\text{g/ml}$ in immunohistochemical analysis.

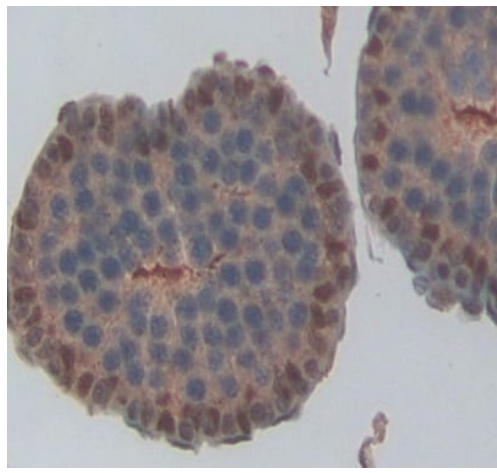
Secondary used: HRP-Linked Goat anti-Rabbit IgG at 2 $\mu\text{g/ml}$. DAB staining.



Immunohistochemistry (Formalin/PFA-fixed paraffin-embedded sections) - Anti-NME6 antibody (ab233442)

Formalin-fixed, paraffin-embedded rat stomach tissue stained for NME6 using ab233442 at 20 $\mu\text{g/ml}$ in immunohistochemical analysis.

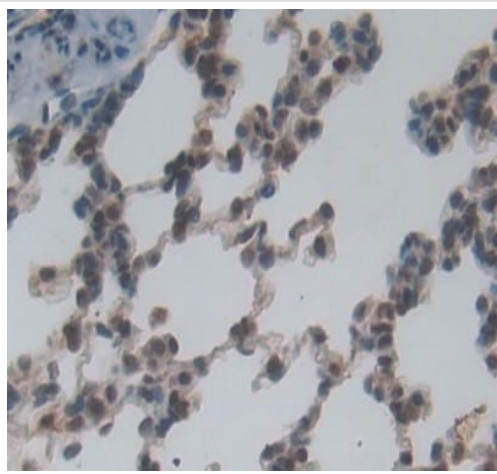
Secondary used: HRP-Linked Goat anti-Rabbit IgG at 2 $\mu\text{g/ml}$. DAB staining.



Immunohistochemistry (Formalin/PFA-fixed paraffin-embedded sections) - Anti-NME6 antibody (ab233442)

Formalin-fixed, paraffin-embedded rat testis tissue stained for NME6 using ab233442 at 20 $\mu\text{g/ml}$ in immunohistochemical analysis.

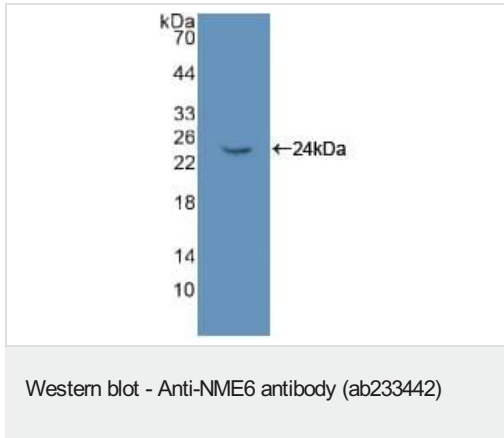
Secondary used: HRP-Linked Goat anti-Rabbit IgG at 2 $\mu\text{g/ml}$. DAB staining.



Immunohistochemistry (Formalin/PFA-fixed paraffin-embedded sections) - Anti-NME6 antibody (ab233442)

Formalin-fixed, paraffin-embedded rat lung tissue stained for NME6 using ab233442 at 20 $\mu\text{g/ml}$ in immunohistochemical analysis.

Secondary used: HRP-Linked Goat anti-Rabbit IgG at 2 $\mu\text{g/ml}$. DAB staining.



Anti-NME6 antibody (ab233442) at 3 µg/ml + Recombinant rat NME6 protein

Predicted band size: 20 kDa

Please note: All products are "FOR RESEARCH USE ONLY. NOT FOR USE IN DIAGNOSTIC PROCEDURES"

Our Abpromise to you: Quality guaranteed and expert technical support

- Replacement or refund for products not performing as stated on the datasheet
- Valid for 12 months from date of delivery
- Response to your inquiry within 24 hours
- We provide support in Chinese, English, French, German, Japanese and Spanish
- Extensive multi-media technical resources to help you
- We investigate all quality concerns to ensure our products perform to the highest standards

If the product does not perform as described on this datasheet, we will offer a refund or replacement. For full details of the Abpromise, please visit <https://www.abcam.com/abpromise> or contact our technical team.

Terms and conditions

- Guarantee only valid for products bought direct from Abcam or one of our authorized distributors