


## Product datasheet

# Anti-NOB1 antibody - C-terminal ab201311

[1 References](#) [2 Images](#)

### Overview

---

<b>Product name</b>	Anti-NOB1 antibody - C-terminal
<b>Description</b>	Rabbit polyclonal to NOB1 - C-terminal
<b>Host species</b>	Rabbit
<b>Tested applications</b>	<b>Suitable for:</b> WB
<b>Species reactivity</b>	<b>Reacts with:</b> Mouse, Human <b>Predicted to work with:</b> Rat, Sheep, Rabbit, Horse, Cow, Dog, Pig, Chimpanzee, Rhesus monkey, Orangutan 
<b>Immunogen</b>	Synthetic peptide within Human NOB1 aa 362-412 (C terminal). The exact sequence is proprietary. NP_054781.1 Database link: <a href="#">Q9ULX3</a>

### General notes

The Life Science industry has been in the grips of a reproducibility crisis for a number of years. Abcam is leading the way in addressing this with our range of recombinant monoclonal antibodies and knockout edited cell lines for gold-standard validation. Please check that this product meets your needs before purchasing.

If you have any questions, special requirements or concerns, please send us an inquiry and/or contact our Support team ahead of purchase. Recommended alternatives for this product can be found below, along with publications, customer reviews and Q&As

### Properties

---

<b>Form</b>	Liquid
<b>Storage instructions</b>	Shipped at 4°C. Store at +4°C short term (1-2 weeks). Upon delivery aliquot. Store at -20°C long term. Avoid freeze / thaw cycle.
<b>Storage buffer</b>	pH: 7 Preservative: 0.09% Sodium azide Constituent: 99% Tris citrate/phosphate  pH 7 to 8
<b>Purity</b>	Immunogen affinity purified
<b>Clonality</b>	Polyclonal
<b>Isotype</b>	IgG

## Applications

### The Abpromise guarantee

Our **Abpromise guarantee** covers the use of ab201311 in the following tested applications.

The application notes include recommended starting dilutions; optimal dilutions/concentrations should be determined by the end user.

Application	Abreviews	Notes
WB		1/2000 - 1/10000. Predicted molecular weight: 47 kDa.

## Target

### Function

May play a role in mRNA degradation.

### Tissue specificity

Detected in liver, lung, placenta, endothelial cells and spleen.

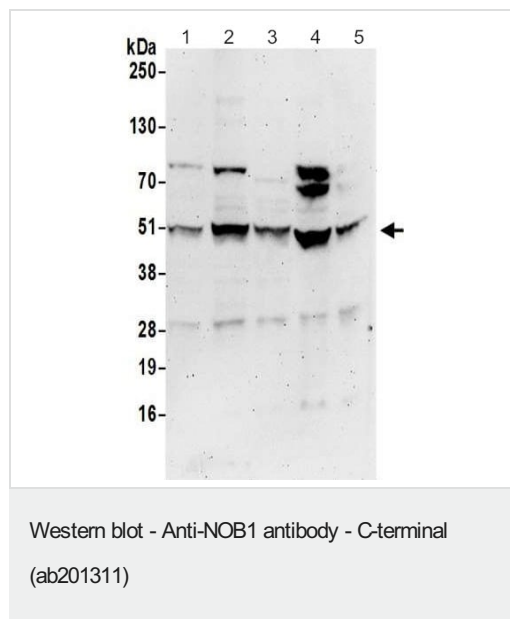
### Sequence similarities

Belongs to the NOB1 family.  
Contains 1 PINc domain.

### Cellular localization

Nucleus.

## Images



**All lanes** : Anti-NOB1 antibody - C-terminal (ab201311) at 0.1  $\mu\text{g/ml}$

**Lane 1** : HeLa whole cell lysate

**Lane 2** : 293T whole cell lysate

**Lane 3** : Jurkat whole cell lysate

**Lane 4** : TCMK-1 whole cell lysate

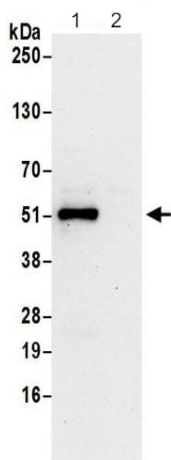
**Lane 5** : NIH3T3 whole cell lysate

Lysates/proteins at 50  $\mu\text{g}$  per lane.

Developed using the ECL technique.

**Predicted band size:** 47 kDa

**Exposure time:** 3 minutes



Western blot - Anti-NOB1 antibody - C-terminal (ab201311)

**All lanes :** Anti-NOB1 antibody - C-terminal (ab201311) at 0.4  $\mu\text{g/ml}$

**Lane 1 :** Immunoprecipitation using ab201311 at 6  $\mu\text{g/mg}$  lysate (1 mg/IP; 20% of IP loaded/lane) from 293T cells prepared using NETN lysis buffer

**Lane 2 :** Immunoprecipitation using control IgG

Developed using the ECL technique.

**Predicted band size:** 47 kDa

**Exposure time:** 30 seconds

**Please note:** All products are "FOR RESEARCH USE ONLY. NOT FOR USE IN DIAGNOSTIC PROCEDURES"

### Our Abpromise to you: Quality guaranteed and expert technical support

- Replacement or refund for products not performing as stated on the datasheet
- Valid for 12 months from date of delivery
- Response to your inquiry within 24 hours
- We provide support in Chinese, English, French, German, Japanese and Spanish
- Extensive multi-media technical resources to help you
- We investigate all quality concerns to ensure our products perform to the highest standards

If the product does not perform as described on this datasheet, we will offer a refund or replacement. For full details of the Abpromise, please visit <https://www.abcam.com/abpromise> or contact our technical team.

### Terms and conditions

- Guarantee only valid for products bought direct from Abcam or one of our authorized distributors