

Anti-NOD1 antibody ab105338

[4 References](#) [1 Image](#)

Overview

Product name	Anti-NOD1 antibody
Description	Rabbit polyclonal to NOD1
Host species	Rabbit
Specificity	ab105338 is predicted to not cross-react with other CARD family members.
Tested applications	Suitable for: WB
Species reactivity	Reacts with: Mouse
Immunogen	Synthetic peptide corresponding to Human NOD1 (C terminal).
Positive control	EL4 cell lysate
General notes	<p>The Life Science industry has been in the grips of a reproducibility crisis for a number of years. Abcam is leading the way in addressing this with our range of recombinant monoclonal antibodies and knockout edited cell lines for gold-standard validation. Please check that this product meets your needs before purchasing.</p> <p>If you have any questions, special requirements or concerns, please send us an inquiry and/or contact our Support team ahead of purchase. Recommended alternatives for this product can be found below, along with publications, customer reviews and Q&As</p>

Properties

Form	Liquid
Storage instructions	Shipped at 4°C. Store at +4°C short term (1-2 weeks). Store at -20°C long term.
Storage buffer	<p>pH: 7.2</p> <p>Preservative: 0.02% Sodium azide</p> <p>Constituent: PBS</p>
Purity	Immunogen affinity purified
Clonality	Polyclonal
Isotype	IgG

Applications

The **Abpromise guarantee** Our **Abpromise guarantee** covers the use of ab105338 in the following tested applications.

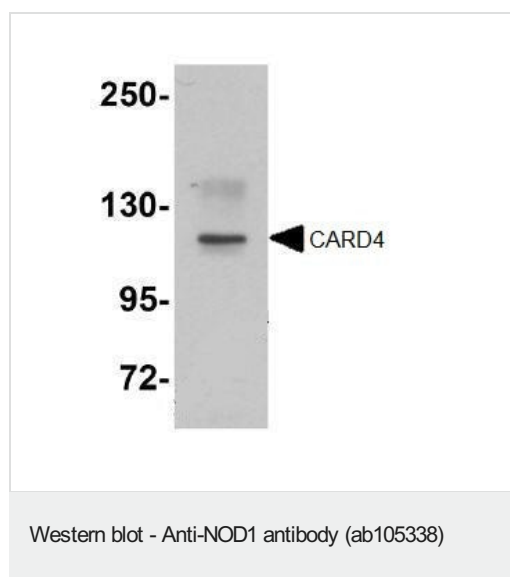
The application notes include recommended starting dilutions; optimal dilutions/concentrations should be determined by the end user.

Application	Abreviews	Notes
WB		Use a concentration of 1 - 2 µg/ml. Predicted molecular weight: 108 kDa.

Target

Function	Enhances caspase-9-mediated apoptosis. Induces NF-kappa-B activity via RIPK2 and IKK-gamma. Confers responsiveness to intracellular bacterial lipopolysaccharides (LPS). Forms an intracellular sensing system along with ARHGEF2 for the detection of microbial effectors during cell invasion by pathogens. Required for RHOA and RIPK2 dependent NF-kappa-B signaling pathway activation upon <i>S.flexneri</i> cell invasion. Involved not only in sensing peptidoglycan (PGN)-derived muropeptides but also in the activation of NF-kappa-B by <i>Shigella</i> effector proteins IpgB2 and OspB. Recruits NLRP10 to the cell membrane following bacterial infection.
Tissue specificity	Highly expressed in adult heart, skeletal muscle, pancreas, spleen and ovary. Also detected in placenta, lung, liver, kidney, thymus, testis, small intestine and colon.
Sequence similarities	Contains 1 CARD domain. Contains 9 LRR (leucine-rich) repeats. Contains 1 NACHT domain.
Post-translational modifications	Ubiquitinated. 'Lys-48'-linked polyubiquitination by RNF34 promotes proteasomal degradation and thereby negatively regulates NOD1 for instance in NF-kappa-B activation.
Cellular localization	Cytoplasm. Cell membrane. Apical cell membrane. Basolateral cell membrane. Detected in the cytoplasm and at the cell membrane. Following bacterial infection, localizes to bacterial entry sites in the cell membrane. Recruited to the basolateral and apical membranes in polarized epithelial cells.

Images



Anti-NOD1 antibody (ab105338) at 1 µg/ml + EL4 cell lysate at 15 µg

Secondary

Anti-rabbit secondary antibody

Predicted band size: 108 kDa

Please note: All products are "FOR RESEARCH USE ONLY. NOT FOR USE IN DIAGNOSTIC PROCEDURES"

Our Abpromise to you: Quality guaranteed and expert technical support

- Replacement or refund for products not performing as stated on the datasheet
- Valid for 12 months from date of delivery
- Response to your inquiry within 24 hours

- We provide support in Chinese, English, French, German, Japanese and Spanish
- Extensive multi-media technical resources to help you
- We investigate all quality concerns to ensure our products perform to the highest standards

If the product does not perform as described on this datasheet, we will offer a refund or replacement. For full details of the Abpromise, please visit <https://www.abcam.com/abpromise> or contact our technical team.

Terms and conditions

- Guarantee only valid for products bought direct from Abcam or one of our authorized distributors