

### Anti-NOL10 antibody ab235529

3 Images

#### Overview

<b>Product name</b>	Anti-NOL10 antibody
<b>Description</b>	Rabbit polyclonal to NOL10
<b>Host species</b>	Rabbit
<b>Tested applications</b>	<b>Suitable for:</b> IHC-P, WB
<b>Species reactivity</b>	<b>Reacts with:</b> Human
<b>Immunogen</b>	Recombinant fragment corresponding to Human NOL10 aa 1-210. Database link: <a href="#">Q9BSC4</a>
<b>Positive control</b>	WB: K562 whole cell lysate. IHC-P: Human pancreas and small intestine tissue.
<b>General notes</b>	<p>The Life Science industry has been in the grips of a reproducibility crisis for a number of years. Abcam is leading the way in addressing this with our range of recombinant monoclonal antibodies and knockout edited cell lines for gold-standard validation. Please check that this product meets your needs before purchasing.</p> <p>If you have any questions, special requirements or concerns, please send us an inquiry and/or contact our Support team ahead of purchase. Recommended alternatives for this product can be found below, along with publications, customer reviews and Q&amp;As</p>

#### Properties

<b>Form</b>	Liquid
<b>Storage instructions</b>	Shipped at 4°C. Store at +4°C short term (1-2 weeks). Upon delivery aliquot. Store at -20°C long term. Avoid freeze / thaw cycle.
<b>Storage buffer</b>	pH: 7.40 Preservative: 0.03% Proclin 300 Constituents: PBS, 50% Glycerol (glycerin, glycerine)
<b>Purity</b>	Protein G purified
<b>Purification notes</b>	Purity >95%
<b>Clonality</b>	Polyclonal
<b>Isotype</b>	IgG

#### Applications

## The Abpromise guarantee

Our **Abpromise guarantee** covers the use of ab235529 in the following tested applications.

The application notes include recommended starting dilutions; optimal dilutions/concentrations should be determined by the end user.

Application	Abreviews	Notes
IHC-P		1/20 - 1/200.
WB		1/500 - 1/2000. Predicted molecular weight: 80 kDa.

## Target

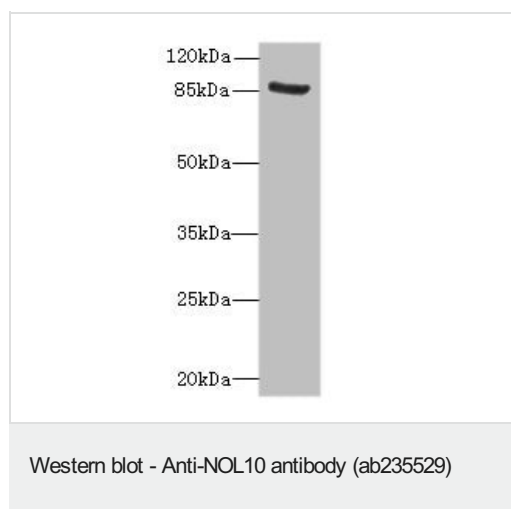
### Sequence similarities

Belongs to the WD repeat NOL10/ENP2 family.  
Contains 5 WD repeats.

### Cellular localization

Nucleus > nucleolus.

## Images

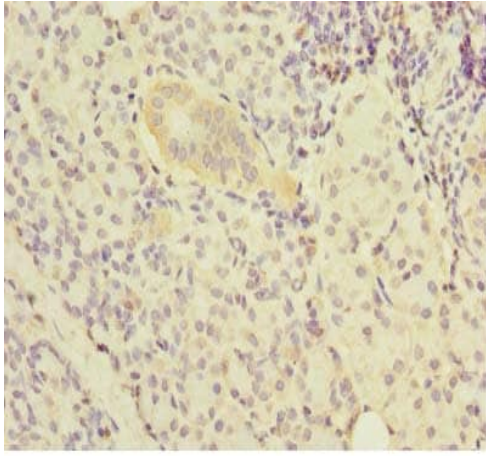


Anti-NOL10 antibody (ab235529) at 1/500 dilution + K562 (human chronic myelogenous leukemia cell line from bone marrow) whole cell lysate

### Secondary

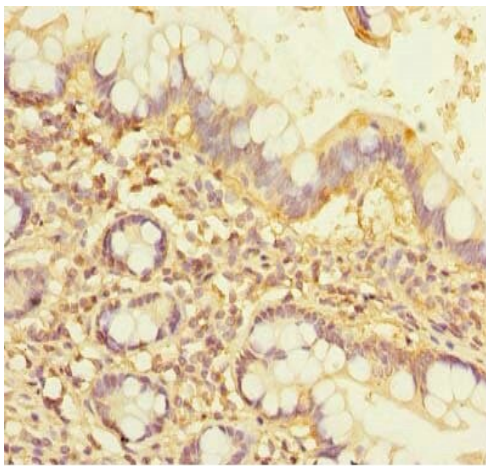
Goat polyclonal to Rabbit IgG at 1/10000 dilution

**Predicted band size:** 80 kDa



Immunohistochemistry (Formalin/PFA-fixed paraffin-embedded sections) - Anti-NOL10 antibody (ab235529)

Paraffin-embedded human pancreas tissue stained for NOL10 using ab235529 at 1/100 dilution in immunohistochemical analysis.



Immunohistochemistry (Formalin/PFA-fixed paraffin-embedded sections) - Anti-NOL10 antibody (ab235529)

Paraffin-embedded human small intestine tissue stained for NOL10 using ab235529 at 1/100 dilution in immunohistochemical analysis.

**Please note:** All products are "FOR RESEARCH USE ONLY. NOT FOR USE IN DIAGNOSTIC PROCEDURES"

### Our Abpromise to you: Quality guaranteed and expert technical support

- Replacement or refund for products not performing as stated on the datasheet
- Valid for 12 months from date of delivery
- Response to your inquiry within 24 hours
- We provide support in Chinese, English, French, German, Japanese and Spanish
- Extensive multi-media technical resources to help you
- We investigate all quality concerns to ensure our products perform to the highest standards

If the product does not perform as described on this datasheet, we will offer a refund or replacement. For full details of the Abpromise,

please visit <https://www.abcam.com/abpromise> or contact our technical team.

#### **Terms and conditions**

---

- Guarantee only valid for products bought direct from Abcam or one of our authorized distributors