


Product datasheet

Anti-NOL3 antibody ab126238

[2 References](#) [4 Images](#)

Overview

Product name	Anti-NOL3 antibody
Description	Rabbit polyclonal to NOL3
Host species	Rabbit
Tested applications	Suitable for: WB, IHC-P, ICC/IF
Species reactivity	Reacts with: Human Predicted to work with: Mouse 
Immunogen	Recombinant fragment corresponding to Human NOL3 aa 1-197. (AAH12798)
Positive control	WB: HeLa lysate ICC/IF: HeLa cells IHC-P: HeLa xenograft; muscle tissue
General notes	<p>The Life Science industry has been in the grips of a reproducibility crisis for a number of years. Abcam is leading the way in addressing this with our range of recombinant monoclonal antibodies and knockout edited cell lines for gold-standard validation. Please check that this product meets your needs before purchasing.</p> <p>If you have any questions, special requirements or concerns, please send us an inquiry and/or contact our Support team ahead of purchase. Recommended alternatives for this product can be found below, along with publications, customer reviews and Q&As</p>

Properties

Form	Liquid
Storage instructions	Shipped at 4°C. Upon delivery aliquot. Store at -20°C or -80°C. Avoid freeze / thaw cycle.
Storage buffer	pH: 7.00 Preservative: 0.01% Thimerosal (merthiolate) Constituents: 78.99% PBS, 1% BSA, 20% Glycerol (glycerin, glycerine)
Purity	Immunogen affinity purified
Clonality	Polyclonal
Isotype	IgG

Applications

The **Abpromise guarantee** Our **Abpromise guarantee** covers the use of ab126238 in the following tested applications.

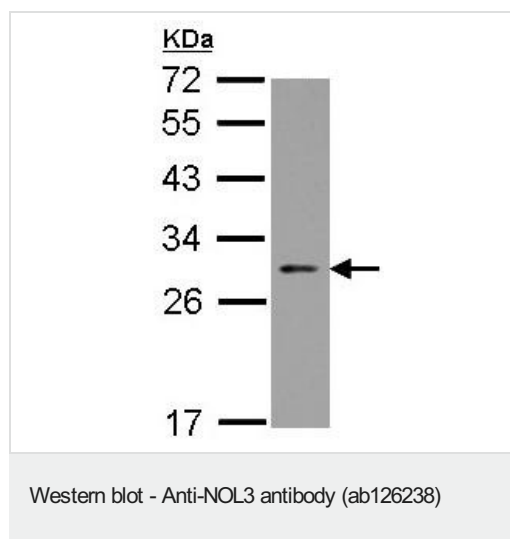
The application notes include recommended starting dilutions; optimal dilutions/concentrations should be determined by the end user.

Application	Abreviews	Notes
WB		1/500 - 1/3000. Predicted molecular weight: 24 kDa.
IHC-P		1/100 - 1/1000.
ICC/IF		1/100 - 1/1000.

Target

Function	Isoform 1 may be involved in RNA splicing. Isoform 2 may inhibit apoptosis.
Tissue specificity	Highly expressed in heart and skeletal muscle. Detected at low levels in placenta, liver, kidney and pancreas.
Sequence similarities	Contains 1 CARD domain.
Cellular localization	Cytoplasm and Nucleus > nucleolus.

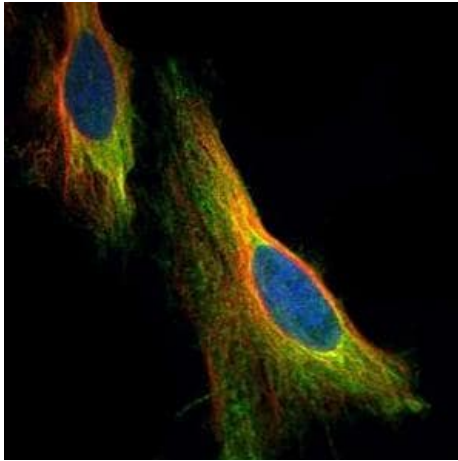
Images



Anti-NOL3 antibody (ab126238) at 1/1000 dilution + HeLa whole cell lysate at 30 μ g

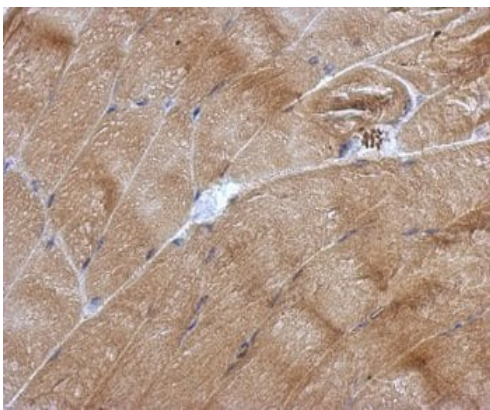
Predicted band size: 24 kDa

12% SDS PAGE



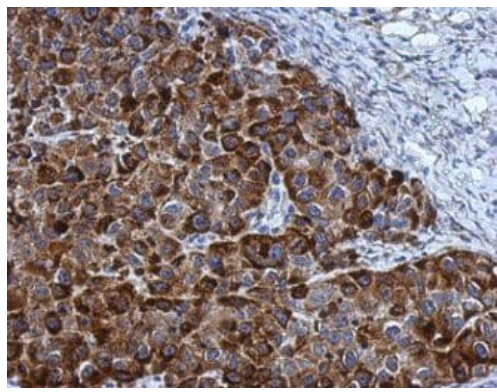
Immunocytochemistry/ Immunofluorescence - Anti-NOL3 antibody (ab126238)

Confocal immunofluorescence analysis of ab126238, at a 1/500 dilution, staining NOL3 in paraformaldehyde fixed HeLa cells (Green). Alpha-tubulin filaments were labeled with another antibody (Red) at a 1/2000 dilution.



Immunohistochemistry (Formalin/PFA-fixed paraffin-embedded sections) - Anti-NOL3 antibody (ab126238)

ab126238, at a 1/500 dilution, staining NOL3 in paraffin embedded muscle tissue by Immunohistochemistry.



ab126238, at 1/500 dilution, staining Human NOL3 in paraffin embedded HeLa xenograft by Immunohistochemistry.

Immunohistochemistry (Formalin/PFA-fixed paraffin-embedded sections) - Anti-NOL3 antibody (ab126238)

Please note: All products are "FOR RESEARCH USE ONLY. NOT FOR USE IN DIAGNOSTIC PROCEDURES"

Our Abpromise to you: Quality guaranteed and expert technical support

- Replacement or refund for products not performing as stated on the datasheet
- Valid for 12 months from date of delivery
- Response to your inquiry within 24 hours

- We provide support in Chinese, English, French, German, Japanese and Spanish
- Extensive multi-media technical resources to help you
- We investigate all quality concerns to ensure our products perform to the highest standards

If the product does not perform as described on this datasheet, we will offer a refund or replacement. For full details of the Abpromise, please visit <https://www.abcam.com/abpromise> or contact our technical team.

Terms and conditions

- Guarantee only valid for products bought direct from Abcam or one of our authorized distributors