



Anti-NOL3 antibody ab2002

[1 References](#) [3 Images](#)

Overview

Product name	Anti-NOL3 antibody
Description	Rabbit polyclonal to NOL3
Host species	Rabbit
Tested applications	Suitable for: IHC-P, WB
Species reactivity	Reacts with: Human
Immunogen	Synthetic peptide corresponding to Human NOL3 aa 191-208 (C terminal). Sequence: PDPEPEPDFEERDESEDS (Peptide available as ab8371)
	<div>  Run BLAST with </div> <div>  Run BLAST with </div>
Positive control	HeLa whole cell lysate
General notes	<p>The Life Science industry has been in the grips of a reproducibility crisis for a number of years. Abcam is leading the way in addressing this with our range of recombinant monoclonal antibodies and knockout edited cell lines for gold-standard validation. Please check that this product meets your needs before purchasing.</p> <p>If you have any questions, special requirements or concerns, please send us an inquiry and/or contact our Support team ahead of purchase. Recommended alternatives for this product can be found below, along with publications, customer reviews and Q&As</p>

Properties

Form	Liquid
Storage instructions	Shipped at 4°C. Upon delivery aliquot and store at -20°C or -80°C. Avoid repeated freeze / thaw cycles.
Storage buffer	pH: 7.2 Preservative: 0.02% Sodium azide
Purity	Immunogen affinity purified
Clonality	Polyclonal
Isotype	IgG

Applications

The Abpromise guarantee

Our **Abpromise guarantee** covers the use of ab2002 in the following tested applications.

The application notes include recommended starting dilutions; optimal dilutions/concentrations should be determined by the end user.

Application	Abreviews	Notes
IHC-P		
WB		

Application notes

IHC-P: Use at an assay dependent dilution.

WB: Use at an assay dependent dilution. Detects a band of approximately 25 kDa. Can be blocked with **ARC (C-term) peptide (human)**.

Not tested in other applications.

Optimal dilutions/concentrations should be determined by the end user.

Target

Function

Isoform 1 may be involved in RNA splicing.

Isoform 2 may inhibit apoptosis.

Tissue specificity

Highly expressed in heart and skeletal muscle. Detected at low levels in placenta, liver, kidney and pancreas.

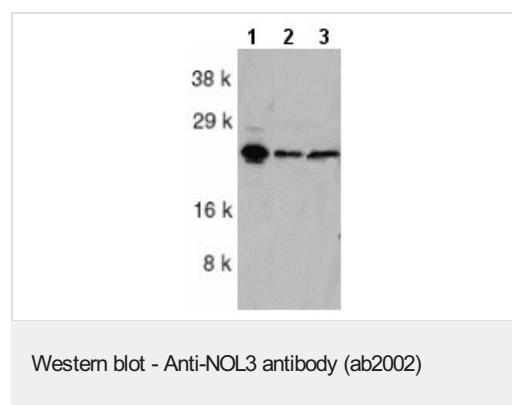
Sequence similarities

Contains 1 CARD domain.

Cellular localization

Cytoplasm and Nucleus > nucleolus.

Images



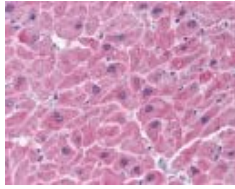
All lanes : Anti-NOL3 antibody (ab2002) at 1/1000 dilution

Lane 1 : HeLa whole cell lysate

Lane 2 : KB whole cell lysate

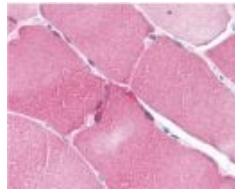
Lane 3 : A549 whole cell lysate

Observed band size: 25 kDa



Immunohistochemistry of NOL3 in human heart tissue with Anti-NOL3 (ab2002) at 5 µg/ml.

Immunohistochemistry (Formalin/PFA-fixed paraffin-embedded sections) - Anti-NOL3 antibody (ab2002)



Immunohistochemistry of NOL3 in skeletal muscle with Anti-NOL3 (ab2002) at 5 µg/ml.

Immunohistochemistry (Formalin/PFA-fixed paraffin-embedded sections) - Anti-NOL3 antibody (ab2002)

Please note: All products are "FOR RESEARCH USE ONLY. NOT FOR USE IN DIAGNOSTIC PROCEDURES"

Our Abpromise to you: Quality guaranteed and expert technical support

- Replacement or refund for products not performing as stated on the datasheet
- Valid for 12 months from date of delivery
- Response to your inquiry within 24 hours
- We provide support in Chinese, English, French, German, Japanese and Spanish
- Extensive multi-media technical resources to help you
- We investigate all quality concerns to ensure our products perform to the highest standards

If the product does not perform as described on this datasheet, we will offer a refund or replacement. For full details of the Abpromise, please visit <https://www.abcam.com/abpromise> or contact our technical team.

Terms and conditions

- Guarantee only valid for products bought direct from Abcam or one of our authorized distributors