




Product datasheet

Anti-Notch2 antibody ab118824

[9 References](#) [1 Image](#)

Overview

Product name	Anti-Notch2 antibody
Description	Rabbit polyclonal to Notch2
Host species	Rabbit
Tested applications	Suitable for: ELISA, ICC/IF, WB, IHC-P
Species reactivity	Reacts with: Human Predicted to work with: Mouse, Rat 
Immunogen	Synthetic peptide corresponding to Human Notch2 aa 2350-2450 conjugated to keyhole limpet haemocyanin (Cysteine residue). Synthetic peptide: NAAERTPSHSGHLQ conjugated to KLH with a Cysteine residue linker, corresponding to amino acids 2396-2409 of Human Notch2 (NP_077719.2).  Run BLAST with  Run BLAST with
Positive control	Human kidney tissue.
General notes	<p>The Life Science industry has been in the grips of a reproducibility crisis for a number of years. Abcam is leading the way in addressing this with our range of recombinant monoclonal antibodies and knockout edited cell lines for gold-standard validation. Please check that this product meets your needs before purchasing.</p> <p>If you have any questions, special requirements or concerns, please send us an inquiry and/or contact our Support team ahead of purchase. Recommended alternatives for this product can be found below, along with publications, customer reviews and Q&As</p>

Properties

Form	Liquid
Storage instructions	Shipped at 4°C. Upon delivery aliquot and store at -20°C. Avoid repeated freeze / thaw cycles.
Storage buffer	pH: 7.20 Preservative: 0.1% Sodium azide Constituents: 0.424% Potassium phosphate, 0.88% Sodium chloride
Purity	Whole antiserum
Clonality	Polyclonal

Isotype

IgG

Applications

The Abpromise guarantee

Our **Abpromise guarantee** covers the use of ab118824 in the following tested applications.

The application notes include recommended starting dilutions; optimal dilutions/concentrations should be determined by the end user.

Application	Abreviews	Notes
ELISA		Use at an assay dependent concentration.
ICC/IF		Use at an assay dependent concentration.
WB		Use at an assay dependent concentration. Predicted molecular weight: 265 kDa.
IHC-P		1/500. Perform heat mediated antigen retrieval with citrate buffer pH 6 before commencing with IHC staining protocol.

Target

Function

Functions as a receptor for membrane-bound ligands Jagged1, Jagged2 and Delta1 to regulate cell-fate determination. Upon ligand activation through the released notch intracellular domain (NICD) it forms a transcriptional activator complex with RBPJ/RBPSUH and activates genes of the enhancer of split locus. Affects the implementation of differentiation, proliferation and apoptotic programs (By similarity). Involved in bone remodeling and homeostasis. In collaboration with RELA/p65 enhances NFATc1 promoter activity and positively regulates RANKL-induced osteoclast differentiation. Positively regulates self-renewal of liver cancer cells (PubMed:25985737).

Tissue specificity

Expressed in the brain, heart, kidney, lung, skeletal muscle and liver. Ubiquitously expressed in the embryo.

Involvement in disease

Alagille syndrome 2
Hajdu-Cheney syndrome

Sequence similarities

Belongs to the NOTCH family.
Contains 6 ANK repeats.
Contains 35 EGF-like domains.
Contains 3 LNR (Lin/Notch) repeats.

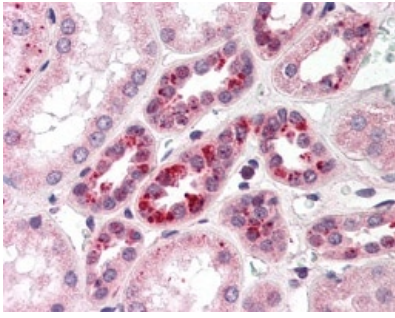
Post-translational modifications

Synthesized in the endoplasmic reticulum as an inactive form which is proteolytically cleaved by a furin-like convertase in the trans-Golgi network before it reaches the plasma membrane to yield an active, ligand-accessible form. Cleavage results in a C-terminal fragment N(TM) and a N-terminal fragment N(EC). Following ligand binding, it is cleaved by TNF-alpha converting enzyme (TACE) to yield a membrane-associated intermediate fragment called notch extracellular truncation (NEXT). This fragment is then cleaved by presenilin dependent gamma-secretase to release a notch-derived peptide containing the intracellular domain (NICD) from the membrane.
Hydroxylated by HIF1AN.
Can be either O-glucosylated or O-xylosylated at Ser-613 by POGLUT1.

Cellular localization

Cell membrane and Nucleus. Cytoplasm. Following proteolytical processing NICD is translocated to the nucleus. Retained at the cytoplasm by C8orf4 (PubMed:25985737).

Images



Immunohistochemistry (Formalin/PFA-fixed paraffin-embedded sections) - Anti-Notch2 antibody (ab118824)

ab118824, at a 1/500 dilution, staining Notch2 in formalin fixed, paraffin embedded Human kidney tissue followed by biotinylated secondary antibody, alkaline phosphatase-streptavidin and chromogen.

Please note: All products are "FOR RESEARCH USE ONLY. NOT FOR USE IN DIAGNOSTIC PROCEDURES"

Our Abpromise to you: Quality guaranteed and expert technical support

- Replacement or refund for products not performing as stated on the datasheet
- Valid for 12 months from date of delivery
- Response to your inquiry within 24 hours
- We provide support in Chinese, English, French, German, Japanese and Spanish
- Extensive multi-media technical resources to help you
- We investigate all quality concerns to ensure our products perform to the highest standards

If the product does not perform as described on this datasheet, we will offer a refund or replacement. For full details of the Abpromise, please visit <https://www.abcam.com/abpromise> or contact our technical team.

Terms and conditions

- Guarantee only valid for products bought direct from Abcam or one of our authorized distributors