

Product datasheet

Anti-NOTUM antibody ab106448

★☆☆☆☆ [1 Abreviews](#) [1 References](#) [2 Images](#)

Overview

Product name	Anti-NOTUM antibody
Description	Rabbit polyclonal to NOTUM
Host species	Rabbit
Tested applications	Suitable for: ICC/IF, WB, IHC-P
Species reactivity	Reacts with: Mouse, Rat, Human
Immunogen	A 19 amino acid peptide near the amino terminus of Human NOTUM (NP_848588).
Positive control	WB: Human kidney tissue lysate IHC-P: Human brain tissue.
General notes	<p>The Life Science industry has been in the grips of a reproducibility crisis for a number of years. Abcam is leading the way in addressing this with our range of recombinant monoclonal antibodies and knockout edited cell lines for gold-standard validation. Please check that this product meets your needs before purchasing.</p> <p>If you have any questions, special requirements or concerns, please send us an inquiry and/or contact our Support team ahead of purchase. Recommended alternatives for this product can be found below, along with publications, customer reviews and Q&As</p>

Properties

Form	Liquid
Storage instructions	Shipped at 4°C. Store at 4°C (stable for up to 12 months).
Storage buffer	pH: 7.2 Preservative: 0.02% Sodium azide Constituent: PBS
Purity	Immunogen affinity purified
Clonality	Polyclonal
Isotype	IgG

Applications

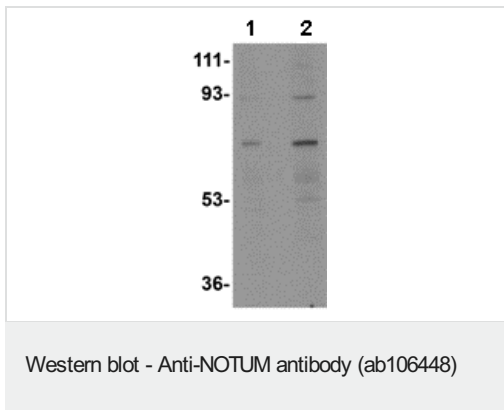
The Abpromise guarantee Our **Abpromise guarantee** covers the use of ab106448 in the following tested applications. The application notes include recommended starting dilutions; optimal dilutions/concentrations should be determined by the end user.

Application	Abreviews	Notes
ICC/IF		Use at an assay dependent concentration.
WB	★☆☆☆☆ (1)	Use a concentration of 0.5 - 1 µg/ml. Predicted molecular weight: 56 kDa.
IHC-P		Use at an assay dependent concentration.

Target

Function	May deacetylate GlcNAc residues on cell surface glycans.
Sequence similarities	Belongs to the pectinacetyltransferase family.
Cellular localization	Secreted.

Images



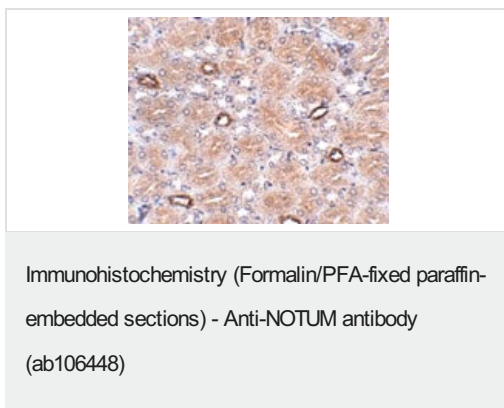
Lane 1 : Anti-NOTUM antibody (ab106448) at 0.5 µg/ml

Lane 2 : Anti-NOTUM antibody (ab106448) at 1 µg/ml

All lanes : Human kidney tissue lysate

Lysates/proteins at 15 µg per lane.

Predicted band size: 56 kDa



ab106448 at 2.5µg/ml staining NOTUM in Human brain by Immunohistochemistry.

Please note: All products are "FOR RESEARCH USE ONLY. NOT FOR USE IN DIAGNOSTIC PROCEDURES"

Our Abpromise to you: Quality guaranteed and expert technical support

- Replacement or refund for products not performing as stated on the datasheet

- Valid for 12 months from date of delivery
- Response to your inquiry within 24 hours

- We provide support in Chinese, English, French, German, Japanese and Spanish
- Extensive multi-media technical resources to help you
- We investigate all quality concerns to ensure our products perform to the highest standards

If the product does not perform as described on this datasheet, we will offer a refund or replacement. For full details of the Abpromise, please visit <https://www.abcam.com/abpromise> or contact our technical team.

Terms and conditions

- Guarantee only valid for products bought direct from Abcam or one of our authorized distributors