


## Product datasheet

### Anti-Noxa antibody ab36833

★ ★ ★ ★ ★ [2 Abreviews](#) [16 References](#) [4 Images](#)

#### Overview

<b>Product name</b>	Anti-Noxa antibody
<b>Description</b>	Rabbit polyclonal to Noxa
<b>Host species</b>	Rabbit
<b>Specificity</b>	Although immunogen is from Mouse, customer feedback indicates that the results for Mouse are non-specific (see Abreviews).
<b>Tested applications</b>	<b>Suitable for:</b> WB, IHC-P, ICC/IF
<b>Species reactivity</b>	<b>Reacts with:</b> Human <b>Predicted to work with:</b> Rat 
<b>Immunogen</b>	Synthetic peptide corresponding to 17 amino acids at the amino terminus of mouse Noxa. (Peptide available as <a href="#">ab39823</a> .)
<b>Positive control</b>	Human stomach tissue lysate.
<b>General notes</b>	<p>The Life Science industry has been in the grips of a reproducibility crisis for a number of years. Abcam is leading the way in addressing this with our range of recombinant monoclonal antibodies and knockout edited cell lines for gold-standard validation. Please check that this product meets your needs before purchasing.</p> <p>If you have any questions, special requirements or concerns, please send us an inquiry and/or contact our Support team ahead of purchase. Recommended alternatives for this product can be found below, along with publications, customer reviews and Q&amp;As</p>

#### Properties

<b>Form</b>	Liquid
<b>Storage instructions</b>	Shipped at 4°C. Store at +4°C.
<b>Storage buffer</b>	pH: 7.2 Preservative: 0.02% Sodium azide Constituent: PBS
<b>Purity</b>	Immunogen affinity purified
<b>Clonality</b>	Polyclonal
<b>Isotype</b>	IgG

## Applications

### The Abpromise guarantee

Our **Abpromise guarantee** covers the use of ab36833 in the following tested applications.

The application notes include recommended starting dilutions; optimal dilutions/concentrations should be determined by the end user.

Application	Abreviews	Notes
WB	★ ★ ★ ★ ★ (2)	Use a concentration of 0.5 - 1 µg/ml. Predicted molecular weight: 6 kDa.
IHC-P		Use a concentration of 1 µg/ml.
ICC/IF		Use a concentration of 1 - 5 µg/ml.

## Target

### Function

Promotes activation of caspases and apoptosis. Promotes mitochondrial membrane changes and efflux of apoptogenic proteins from the mitochondria. Contributes to p53/TP53-dependent apoptosis after radiation exposure. Promotes proteasomal degradation of MCL1. Competes with BAK1 for binding to MCL1 and can displace BAK1 from its binding site on MCL1 (By similarity). Competes with BIM/BCL2L11 for binding to MCL1 and can displace BIM/BCL2L11 from its binding site on MCL1.

### Tissue specificity

Highly expressed in adult T-cell leukemia cell line.

### Sequence similarities

Belongs to the PMAIP1 family.

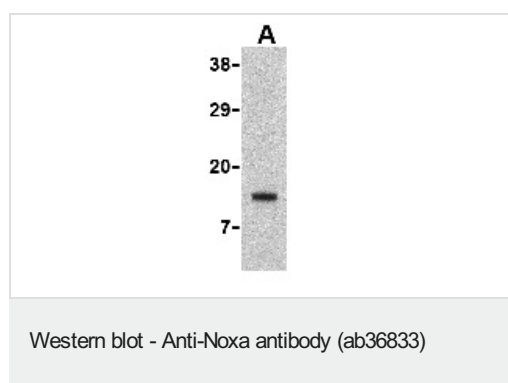
### Domain

The BH3 motif is essential for pro-apoptotic activity.

### Cellular localization

Mitochondrion.

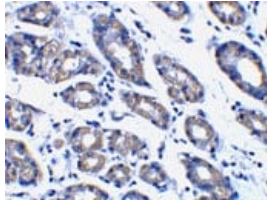
## Images



Anti-Noxa antibody (ab36833) at 0.5 µg/ml + Human stomach cell lysate

**Predicted band size:** 6 kDa

**Observed band size:** 15 kDa



Immunohistochemistry (Formalin/PFA-fixed paraffin-embedded sections) - Anti-Noxa antibody (ab36833)

ab36833 at 1µg/ml staining Noxa in human stomach tissue by IHC

Immunocytochemistry/ Immunofluorescence - Anti-Noxa antibody (ab36833)

ICC/IF image of ab36833 stained HeLa cells. The cells were 100% methanol fixed (5 min) and then incubated in 1%BSA / 10% normal goat serum / 0.3M glycine in 0.1% PBS-Tween for 1h to permeabilise the cells and block non-specific protein-protein interactions. The cells were then incubated with the antibody (ab36833, 1µg/ml) overnight at +4°C. The secondary antibody (green) was Alexa Fluor® 488 goat anti-rabbit IgG (H+L) used at a 1/1000 dilution for 1h. Alexa Fluor® 594 WGA was used to label plasma membranes (red) at a 1/200 dilution for 1h. DAPI was used to stain the cell nuclei (blue) at a concentration of 1.43µM.

Immunocytochemistry/ Immunofluorescence - Anti-Noxa antibody (ab36833)

Immunofluorescence of Noxa in Human Stomach cells using ab36833 at 10 ug/ml.

**Please note:** All products are "FOR RESEARCH USE ONLY. NOT FOR USE IN DIAGNOSTIC PROCEDURES"

### Our Abpromise to you: Quality guaranteed and expert technical support

- Replacement or refund for products not performing as stated on the datasheet
- Valid for 12 months from date of delivery
- Response to your inquiry within 24 hours
- We provide support in Chinese, English, French, German, Japanese and Spanish
- Extensive multi-media technical resources to help you
- We investigate all quality concerns to ensure our products perform to the highest standards

If the product does not perform as described on this datasheet, we will offer a refund or replacement. For full details of the Abpromise, please visit <https://www.abcam.com/abpromise> or contact our technical team.

### Terms and conditions

- Guarantee only valid for products bought direct from Abcam or one of our authorized distributors