




Product datasheet

Anti-NPEPPS antibody ab251735

5 Images

Overview

Product name	Anti-NPEPPS antibody
Description	Rabbit polyclonal to NPEPPS
Host species	Rabbit
Tested applications	Suitable for: IHC-P, ICC/IF
Species reactivity	Reacts with: Human Predicted to work with: Mouse 
Immunogen	Recombinant fragment corresponding to Human NPEPPS aa 700-850. Database link: P55786  Run BLAST with  Run BLAST with
Positive control	IHC-P: Human duodenum, kidney, Fallopian tube and testis tissue. ICC/IF: A549 cells.
General notes	<p>The Life Science industry has been in the grips of a reproducibility crisis for a number of years. Abcam is leading the way in addressing this with our range of recombinant monoclonal antibodies and knockout edited cell lines for gold-standard validation. Please check that this product meets your needs before purchasing.</p> <p>If you have any questions, special requirements or concerns, please send us an inquiry and/or contact our Support team ahead of purchase. Recommended alternatives for this product can be found below, along with publications, customer reviews and Q&As</p>

Properties

Form	Liquid
Storage instructions	Shipped at 4°C. Store at +4°C short term (1-2 weeks). Upon delivery aliquot. Store at -20°C long term. Avoid freeze / thaw cycle.
Storage buffer	pH: 7.2 Preservative: 0.02% Sodium azide Constituents: PBS, 40% Glycerol (glycerin, glycerine)
Purity	Immunogen affinity purified
Clonality	Polyclonal
Isotype	IgG

Applications

The Abpromise guarantee

Our **Abpromise guarantee** covers the use of ab251735 in the following tested applications.

The application notes include recommended starting dilutions; optimal dilutions/concentrations should be determined by the end user.

Application	Abreviews	Notes
IHC-P		1/20 - 1/50. Perform heat mediated antigen retrieval with citrate buffer pH 6 before commencing with IHC staining protocol.
ICC/IF		Use a concentration of 0.25 - 2 µg/ml. Fixation/Permeabilization: PFA/Triton X-100.

Target

Function

Aminopeptidase with broad substrate specificity for several peptides. Involved in proteolytic events essential for cell growth and viability. May act as regulator of neuropeptide activity. Plays a role in the antigen-processing pathway for MHC class I molecules. Involved in the N-terminal trimming of cytotoxic T-cell epitope precursors. Digests the poly-Q peptides found in many cellular proteins. Digests tau from normal brain more efficiently than tau from Alzheimer disease brain.

Tissue specificity

Detected in liver, epithelium of renal tubules, epithelium of small and large intestine, gastric epithelial cells, and alveoli of the lung (at protein level).

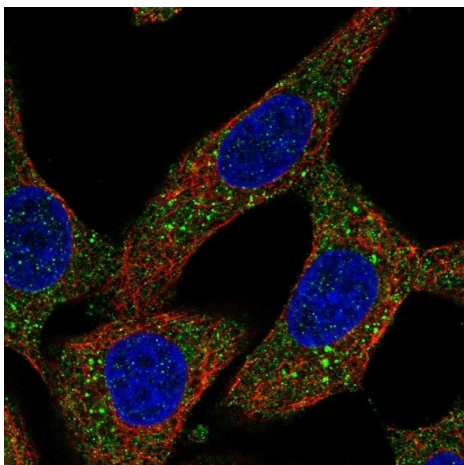
Sequence similarities

Belongs to the peptidase M1 family.

Cellular localization

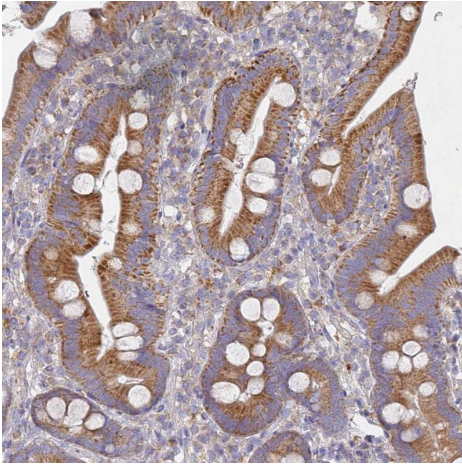
Cytoplasm > cytosol. Nucleus.

Images



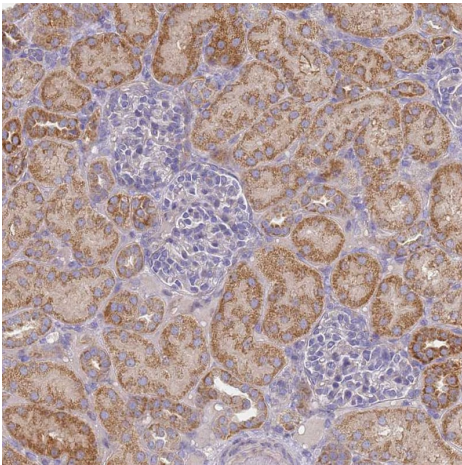
PFA-fixed, Triton X-100 permeabilized A549 (human lung carcinoma cell line) cells stained for NPEPPS (green) using ab251735 at 4 µg/ml in ICC/IF.

Immunocytochemistry/ Immunofluorescence - Anti-NPEPPS antibody (ab251735)



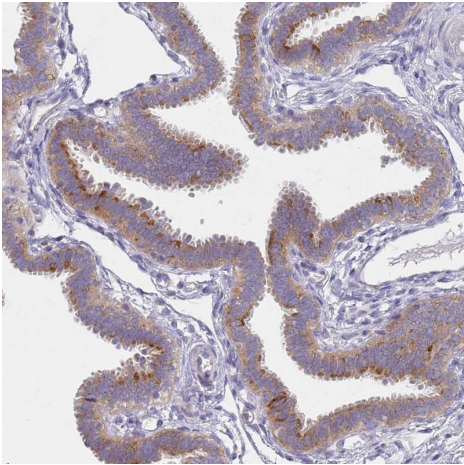
Immunohistochemistry (Formalin/PFA-fixed paraffin-embedded sections) - Anti-NPEPPS antibody (ab251735)

Formalin-fixed, paraffin-embedded human duodenum tissue stained for NPEPPS with ab251735 at a 1/20 dilution in immunohistochemical analysis.



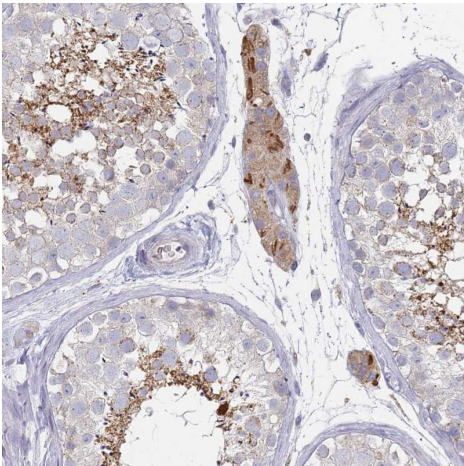
Immunohistochemistry (Formalin/PFA-fixed paraffin-embedded sections) - Anti-NPEPPS antibody (ab251735)

Formalin-fixed, paraffin-embedded human kidney tissue stained for NPEPPS with ab251735 at a 1/20 dilution in immunohistochemical analysis.



Formalin-fixed, paraffin-embedded human Fallopian tube tissue stained for NPEPPS with ab251735 at a 1/20 dilution in immunohistochemical analysis.

Immunohistochemistry (Formalin/PFA-fixed paraffin-embedded sections) - Anti-NPEPPS antibody (ab251735)



Formalin-fixed, paraffin-embedded human testis tissue stained for NPEPPS with ab251735 at a 1/20 dilution in immunohistochemical analysis.

Immunohistochemistry (Formalin/PFA-fixed paraffin-embedded sections) - Anti-NPEPPS antibody (ab251735)

Please note: All products are "FOR RESEARCH USE ONLY. NOT FOR USE IN DIAGNOSTIC PROCEDURES"

Our Abpromise to you: Quality guaranteed and expert technical support

- Replacement or refund for products not performing as stated on the datasheet
- Valid for 12 months from date of delivery
- Response to your inquiry within 24 hours

- We provide support in Chinese, English, French, German, Japanese and Spanish
- Extensive multi-media technical resources to help you
- We investigate all quality concerns to ensure our products perform to the highest standards

If the product does not perform as described on this datasheet, we will offer a refund or replacement. For full details of the Abpromise, please visit [**https://www.abcam.com/abpromise**](https://www.abcam.com/abpromise) or contact our technical team.

Terms and conditions

- Guarantee only valid for products bought direct from Abcam or one of our authorized distributors