


Product datasheet

Anti-NPHS2 antibody ab50339

★★★★★ [10 Abreviews](#) [83 References](#) [5 Images](#)

Overview

Product name	Anti-NPHS2 antibody
Description	Rabbit polyclonal to NPHS2
Host species	Rabbit
Tested applications	Suitable for: IHC-P, WB
Species reactivity	Reacts with: Mouse, Rat Predicted to work with: Human 
Immunogen	Synthetic peptide corresponding to Human NPHS2 aa 367-383 conjugated to keyhole limpet haemocyanin (Cysteine residue). Synthetic peptide conjugated to KLH by an N-terminal Cysteine residue linker. Sequence: SKPVEPLNPKKKDSPML Run BLAST with Run BLAST with
General notes	<p>The Life Science industry has been in the grips of a reproducibility crisis for a number of years. Abcam is leading the way in addressing this with our range of recombinant monoclonal antibodies and knockout edited cell lines for gold-standard validation. Please check that this product meets your needs before purchasing.</p> <p>If you have any questions, special requirements or concerns, please send us an inquiry and/or contact our Support team ahead of purchase. Recommended alternatives for this product can be found below, along with publications, customer reviews and Q&As</p>

Properties

Form	Liquid
Storage instructions	Shipped at 4°C. Store at +4°C short term (1-2 weeks). Upon delivery aliquot. Store at -20°C or -80°C. Avoid freeze / thaw cycle.
Storage buffer	pH: 7.40 Preservative: 0.097% Sodium azide Constituent: 0.0268% PBS
Purity	Immunogen affinity purified
Purification notes	ab50339 is affinity-purified using the immunizing peptide immobilized on agarose.
Clonality	Polyclonal

Isotype

IgG

Applications

The Abpromise guarantee

Our **Abpromise guarantee** covers the use of ab50339 in the following tested applications.

The application notes include recommended starting dilutions; optimal dilutions/concentrations should be determined by the end user.

Application	Abreviews	Notes
IHC-P	★★★★★ (5)	Use a concentration of 0.2 µg/ml.
WB		Use a concentration of 0.5 - 1 µg/ml. Predicted molecular weight: 42 kDa. Additional weak bands may be detected when immunoblotting various extract preparations. Detection of podocin (doublet) by immunoblotting is specifically inhibited with the immunizing peptide. The upper band may represent a post-translational modified variant.

Target

Function

Plays a role in the regulation of glomerular permeability, acting probably as a linker between the plasma membrane and the cytoskeleton.

Tissue specificity

Almost exclusively expressed in the podocytes of fetal and mature kidney glomeruli.

Involvement in disease

Defects in NPHS2 are the cause of nephrotic syndrome type 2 (NPHS2) [MIM:600995]. It is a renal disorder characterized clinically by childhood onset of proteinuria, hypoalbuminemia, hyperlipidemia, and edema. Kidney biopsies show non-specific histologic changes such as focal segmental glomerulosclerosis and diffuse mesangial proliferation. The disorder is resistant to steroid treatment and progresses to end-stage renal failure in the first or second decades. Some patients show later onset of the disorder.

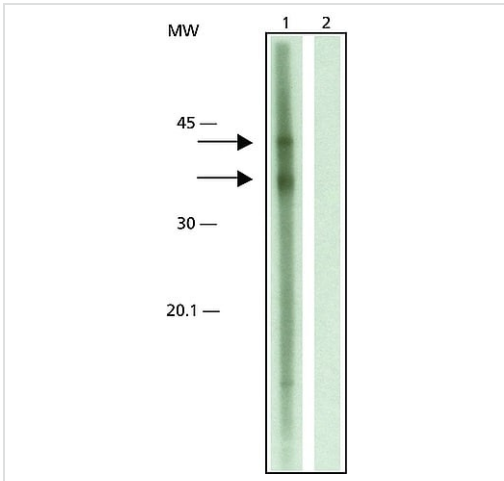
Sequence similarities

Belongs to the band 7/mec-2 family.

Cellular localization

Cell membrane.

Images



Western blot - Anti-NPHS2 antibody (ab50339)

All lanes : Anti-NPHS2 antibody (ab50339) at 1 µg/ml

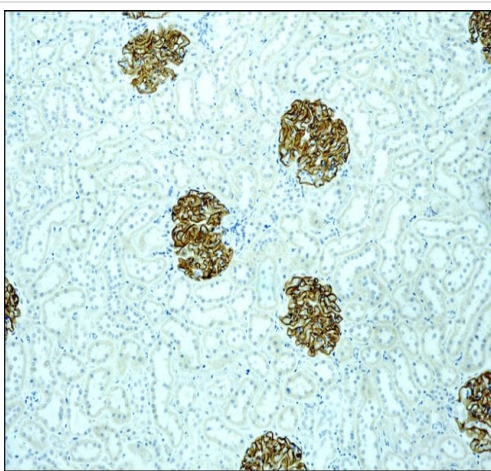
Lane 1 : Rat glomeruli tissue extract

Lane 2 : Rat glomeruli tissue extract with Immunizing peptide

Secondary

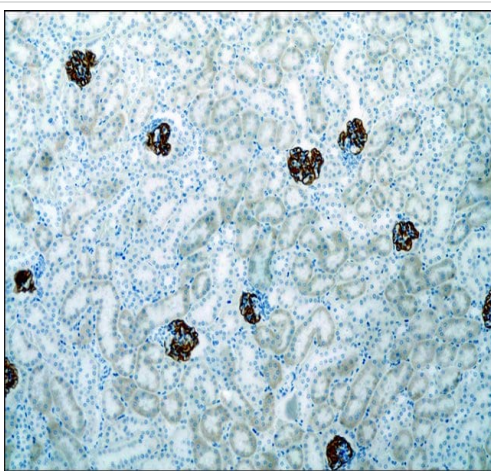
All lanes : Anti_rabbit IgG-peroxidase

Predicted band size: 42 kDa



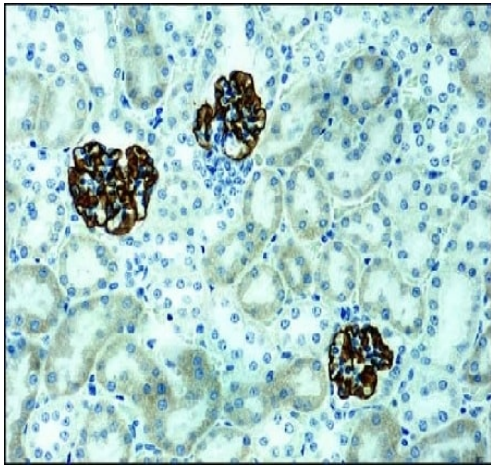
Immunohistochemistry (Formalin/PFA-fixed paraffin-embedded sections) - Anti-NPHS2 antibody (ab50339)

Immunohistochemical analysis of formalin-fixed, paraffin-embedded rat kidney tissue using ab50339 at 0.2 µg/ml.



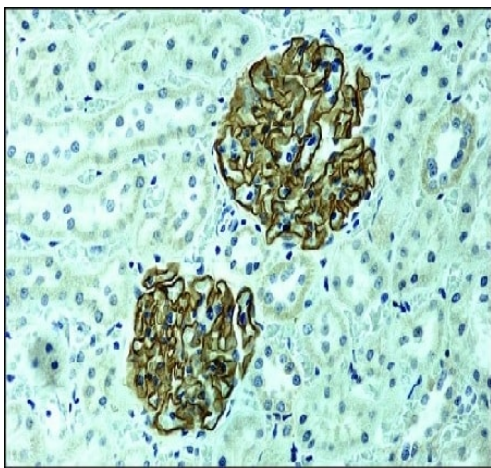
Immunohistochemistry (Formalin/PFA-fixed paraffin-embedded sections) - Anti-NPHS2 antibody (ab50339)

Immunohistochemical analysis of formalin-fixed, paraffin-embedded mouse kidney tissue using ab50339 at 0.2 µg/ml.



Immunohistochemical analysis of paraffin-embedded mouse kidney tissue labeling NPHS2 with ab50339 at 0.2 µg/ml.

Immunohistochemistry (Formalin/PFA-fixed paraffin-embedded sections) - Anti-NPHS2 antibody (ab50339)



Immunohistochemical analysis of paraffin-embedded rat kidney tissue labeling NPHS2 with ab50339 at 0.2 µg/ml.

Immunohistochemistry (Formalin/PFA-fixed paraffin-embedded sections) - Anti-NPHS2 antibody (ab50339)

Please note: All products are "FOR RESEARCH USE ONLY. NOT FOR USE IN DIAGNOSTIC PROCEDURES"

Our Abpromise to you: Quality guaranteed and expert technical support

- Replacement or refund for products not performing as stated on the datasheet
- Valid for 12 months from date of delivery
- Response to your inquiry within 24 hours
- We provide support in Chinese, English, French, German, Japanese and Spanish
- Extensive multi-media technical resources to help you
- We investigate all quality concerns to ensure our products perform to the highest standards

If the product does not perform as described on this datasheet, we will offer a refund or replacement. For full details of the Abpromise, please visit <https://www.abcam.com/abpromise> or contact our technical team.

Terms and conditions

- Guarantee only valid for products bought direct from Abcam or one of our authorized distributors