

Product datasheet

Anti-NPL4 antibody ab68020

[2 Images](#)

Overview

Product name	Anti-NPL4 antibody
Description	Mouse polyclonal to NPL4
Host species	Mouse
Specificity	This antibody is reactive against mammalian transfected lysate.
Tested applications	Suitable for: WB
Species reactivity	Reacts with: Human
Immunogen	Recombinant full length protein within Human NPL4. The exact immunogen sequence used to generate this antibody is proprietary information. If additional detail on the immunogen is needed to determine the suitability of the antibody for your needs, please contact our Scientific Support team to discuss your requirements.
Positive control	Transfected 293T cell lysate and human spleen tissue lysate.
General notes	<p>The Life Science industry has been in the grips of a reproducibility crisis for a number of years. Abcam is leading the way in addressing this with our range of recombinant monoclonal antibodies and knockout edited cell lines for gold-standard validation. Please check that this product meets your needs before purchasing.</p> <p>If you have any questions, special requirements or concerns, please send us an inquiry and/or contact our Support team ahead of purchase. Recommended alternatives for this product can be found below, along with publications, customer reviews and Q&As</p>

Properties

Form	Liquid
Storage instructions	Shipped at 4°C. Upon delivery aliquot and store at -20°C or -80°C. Avoid repeated freeze / thaw cycles.
Storage buffer	pH: 7.40 Constituent: 100% PBS
Purity	Protein A purified
Clonality	Polyclonal
Isotype	IgG

Applications

The Abpromise guarantee

Our **Abpromise guarantee** covers the use of ab68020 in the following tested applications.

The application notes include recommended starting dilutions; optimal dilutions/concentrations should be determined by the end user.

Application	Abreviews	Notes
WB		1/500 - 1/1000. Detects a band of approximately 68, 75 kDa (predicted molecular weight: 68 kDa).

Target

Function

The ternary complex containing UFD1L, VCP and NPLOC4 binds ubiquitinated proteins and is necessary for the export of misfolded proteins from the ER to the cytoplasm, where they are degraded by the proteasome. The NPLOC4-UFD1L-VCP complex regulates spindle disassembly at the end of mitosis and is necessary for the formation of a closed nuclear envelope.

Tissue specificity

Expressed at highest levels in brain, heart, skeletal muscle, kidney and fetal liver.

Pathway

Protein degradation; proteasomal ubiquitin-dependent pathway.

Sequence similarities

Belongs to the NPL4 family.
Contains 1 RanBP2-type zinc finger.

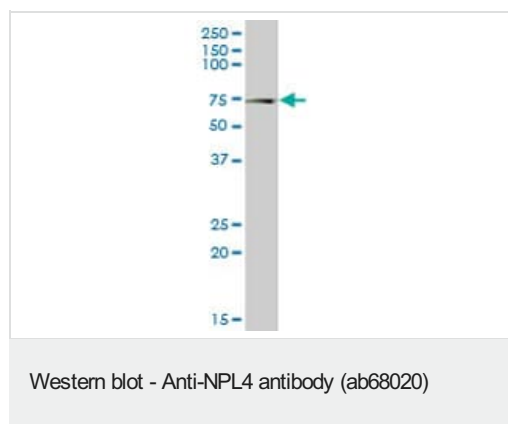
Domain

Binds ubiquitinated proteins via its RanBP2-type zinc finger.

Cellular localization

Cytoplasm > cytosol. Endoplasmic reticulum. Nucleus. Associated with the endoplasmic reticulum and nuclear.

Images



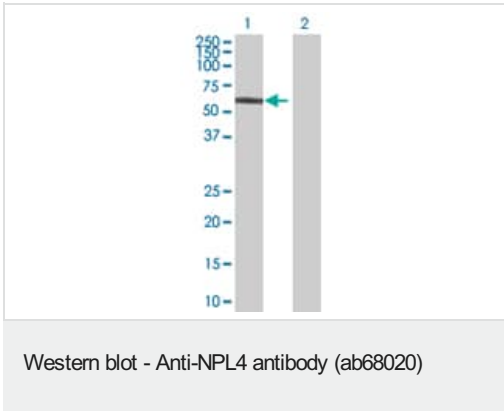
Anti-NPL4 antibody (ab68020) at 1/500 dilution + human spleen tissue lysate at 25 µg

Secondary

Goat Anti-Mouse IgG (H&L)-HRP Conjugate at 1/2500 dilution

Predicted band size: 68 kDa

Observed band size: 75 kDa



All lanes : Anti-NPL4 antibody (ab68020) at 1/500 dilution

Lane 1 : NPLOC4 transfected 293T cell lysate

Lane 2 : Non-transfected 293T cell lysate

Lysates/proteins at 25 µg per lane.

Secondary

All lanes : Goat Anti-Mouse IgG (H&L)-HRP Conjugate at 1/2500 dilution

Predicted band size: 68 kDa

Observed band size: 68 kDa

Please note: All products are "FOR RESEARCH USE ONLY. NOT FOR USE IN DIAGNOSTIC PROCEDURES"

Our Abpromise to you: Quality guaranteed and expert technical support

- Replacement or refund for products not performing as stated on the datasheet
- Valid for 12 months from date of delivery
- Response to your inquiry within 24 hours
- We provide support in Chinese, English, French, German, Japanese and Spanish
- Extensive multi-media technical resources to help you
- We investigate all quality concerns to ensure our products perform to the highest standards

If the product does not perform as described on this datasheet, we will offer a refund or replacement. For full details of the Abpromise, please visit <https://www.abcam.com/abpromise> or contact our technical team.

Terms and conditions

- Guarantee only valid for products bought direct from Abcam or one of our authorized distributors