

## Product datasheet

# Anti-NPR-A antibody ab14356

★★★★☆ [3 Abreviews](#) [13 References](#) [1 Image](#)

### Overview

---

<b>Product name</b>	Anti-NPR-A antibody
<b>Description</b>	Rabbit polyclonal to NPR-A
<b>Host species</b>	Rabbit
<b>Tested applications</b>	<b>Suitable for:</b> ICC, IHC-Fr, IHC-P, ICC/IF, Flow Cyt, WB
<b>Species reactivity</b>	<b>Reacts with:</b> Rat, Human
<b>Immunogen</b>	Synthetic peptide corresponding to Human NPR-A aa 294-308 conjugated to keyhole limpet haemocyanin. Sequence: LKQLKHLAYEQFNFT

(Peptide available as [ab28437](#), [ab49403](#))

 [Run BLAST with](#)

 [Run BLAST with](#)

### General notes

The Life Science industry has been in the grips of a reproducibility crisis for a number of years. Abcam is leading the way in addressing this with our range of recombinant monoclonal antibodies and knockout edited cell lines for gold-standard validation. Please check that this product meets your needs before purchasing.

If you have any questions, special requirements or concerns, please send us an inquiry and/or contact our Support team ahead of purchase. Recommended alternatives for this product can be found below, along with publications, customer reviews and Q&As

### Properties

---

<b>Form</b>	Liquid
<b>Storage instructions</b>	Shipped at 4°C. Upon delivery aliquot and store at -20°C. Avoid freeze / thaw cycles.
<b>Purity</b>	Whole antiserum
<b>Clonality</b>	Polyclonal
<b>Isotype</b>	IgG

### Applications

---

## The Abpromise guarantee

Our **Abpromise guarantee** covers the use of ab14356 in the following tested applications.

The application notes include recommended starting dilutions; optimal dilutions/concentrations should be determined by the end user.

Application	Abreviews	Notes
ICC		Use at an assay dependent concentration.
IHC-Fr		Use at an assay dependent concentration.
IHC-P	★★★★★ (1)	Use at an assay dependent concentration.
ICC/IF		1/300.
Flow Cyt	★★★★★ (1)	Use at an assay dependent concentration. <b>ab171870</b> - Rabbit polyclonal IgG, is suitable for use as an isotype control with this antibody.
WB	★★★★★ (1)	Use at an assay dependent concentration.

## Target

### Function

Receptor for the atrial natriuretic peptide NPPA/ANP and the brain natriuretic peptide NPPB/BNP which are potent vasoactive hormones playing a key role in cardiovascular homeostasis. Has guanylate cyclase activity upon binding of the ligand.

### Sequence similarities

Belongs to the adenylyl cyclase class-4/guanylyl cyclase family.  
Contains 1 guanylate cyclase domain.  
Contains 1 protein kinase domain.

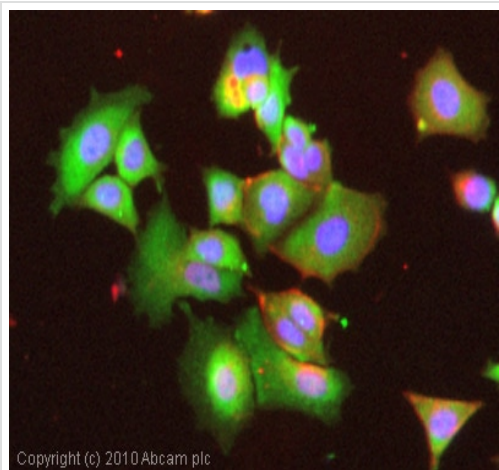
### Post-translational modifications

Phosphorylation of the protein kinase-like domain is required for full activation by ANP.

### Cellular localization

Membrane.

## Images



Immunocytochemistry/ Immunofluorescence - Anti-NPR-A antibody (ab14356)

ICC/IF image of ab14356 stained MCF7 cells. The cells were 4% PFA fixed (10 min) and then incubated in 1%BSA / 10% normal goat serum / 0.3M glycine in 0.1% PBS-Tween for 1h to permeabilise the cells and block non-specific protein-protein interactions. The cells were then incubated with the antibody (ab14356, 5µg/ml) overnight at +4°C. The secondary antibody (green) was Alexa Fluor® 488 goat anti-rabbit IgG (H+L) used at a 1/1000 dilution for 1h. Alexa Fluor® 594 WGA was used to label plasma membranes (red) at a 1/200 dilution for 1h. DAPI was used to stain the cell nuclei (blue) at a concentration of 1.43µM.

**Please note:** All products are "FOR RESEARCH USE ONLY. NOT FOR USE IN DIAGNOSTIC PROCEDURES"

### Our Abpromise to you: Quality guaranteed and expert technical support

---

- Replacement or refund for products not performing as stated on the datasheet
- Valid for 12 months from date of delivery
- Response to your inquiry within 24 hours
- We provide support in Chinese, English, French, German, Japanese and Spanish
- Extensive multi-media technical resources to help you
- We investigate all quality concerns to ensure our products perform to the highest standards

If the product does not perform as described on this datasheet, we will offer a refund or replacement. For full details of the Abpromise, please visit <https://www.abcam.com/abpromise> or contact our technical team.

### Terms and conditions

---

- Guarantee only valid for products bought direct from Abcam or one of our authorized distributors