

Product datasheet

Anti-NR2F6/EAR-2 antibody ab137496

[4 References](#) [3 Images](#)

Overview

Product name	Anti-NR2F6/EAR-2 antibody
Description	Rabbit polyclonal to NR2F6/EAR-2
Host species	Rabbit
Tested applications	Suitable for: WB, IHC-P
Species reactivity	Reacts with: Mouse, Human
Immunogen	Synthetic peptide within Human NR2F6/EAR-2 aa 344-404. The exact sequence is proprietary.
Positive control	HeLa, Raji, NIH 3T3 and JC whole cell lysates, Human gastric carcinoma tissue.
General notes	<p>The Life Science industry has been in the grips of a reproducibility crisis for a number of years. Abcam is leading the way in addressing this with our range of recombinant monoclonal antibodies and knockout edited cell lines for gold-standard validation. Please check that this product meets your needs before purchasing.</p> <p>If you have any questions, special requirements or concerns, please send us an inquiry and/or contact our Support team ahead of purchase. Recommended alternatives for this product can be found below, along with publications, customer reviews and Q&As</p>

Properties

Form	Liquid
Storage instructions	Shipped at 4°C. Upon delivery aliquot. Store at -20°C or -80°C. Avoid freeze / thaw cycle.
Storage buffer	<p>pH: 7.00</p> <p>Preservative: 0.01% Thimerosal (merthiolate)</p> <p>Constituents: 79.99% PBS, 20% Glycerol (glycerin, glycerine)</p>
Purity	Immunogen affinity purified
Clonality	Polyclonal
Isotype	IgG

Applications

The Abpromise guarantee Our **Abpromise guarantee** covers the use of ab137496 in the following tested applications. The application notes include recommended starting dilutions; optimal dilutions/concentrations should be determined by the end user.

Application	Abreviews	Notes
WB		1/500 - 1/3000. Predicted molecular weight: 43 kDa.
IHC-P		1/100 - 1/1000. Perform heat mediated antigen retrieval with citrate buffer pH 6 before commencing with IHC staining protocol. or Tris-EDTA buffer pH8

Target

Function

Transcription factor predominantly involved in transcriptional repression. Binds to promoter/enhancer response elements that contain the imperfect 5'-AGGTCA-3' direct or inverted repeats with various spacings which are also recognized by other nuclear hormone receptors. Involved in modulation of hormonal responses. Represses transcriptional activity of the lutropin-choriogonadotropic hormone receptor/LHCGR gene, the renin/REN gene and the oxytocin-neurophysin/OXT gene. Represses the triiodothyronine-dependent and -independent transcriptional activity of the thyroid hormone receptor gene in a cell type-specific manner. The corepressing function towards thyroid hormone receptor beta/THRB involves at least in part the inhibition of THRB binding to triiodothyronine response elements (TREs) by NR2F6. Inhibits NFATC transcription factor DNA binding and subsequently its transcriptional activity. Acts as transcriptional repressor of IL-17 expression in Th-17 differentiated CD4(+) T cells and may be involved in induction and/or maintenance of peripheral immunological tolerance and autoimmunity. Involved in development of forebrain circadian clock; is required early in the development of the locus coeruleus (LC).

Tissue specificity

Expressed in heart, placenta, liver, skeletal muscle, kidney and pancreas.

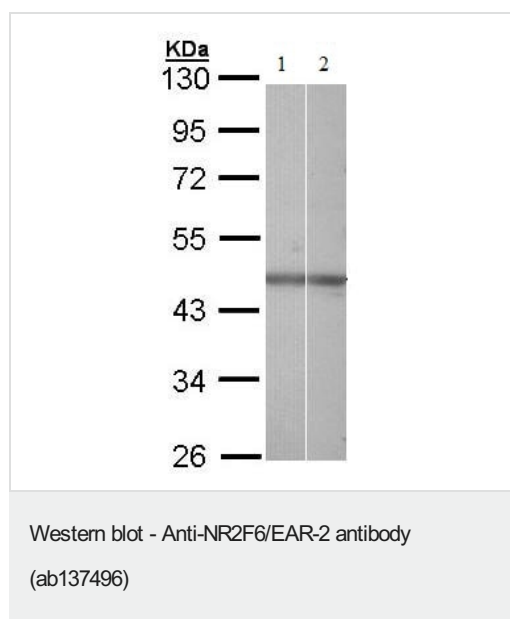
Sequence similarities

Belongs to the nuclear hormone receptor family. NR2 subfamily.
Contains 1 nuclear receptor DNA-binding domain.

Cellular localization

Nucleus.

Images



All lanes : Anti-NR2F6/EAR-2 antibody (ab137496) at 1/1000 dilution

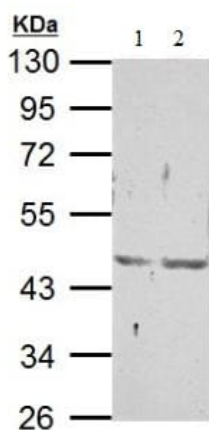
Lane 1 : HeLa whole cell lysate

Lane 2 : Raji whole cell lysate

Lysates/proteins at 30 µg per lane.

Predicted band size: 43 kDa

10% SDS PAGE



Western blot - Anti-NR2F6/EAR-2 antibody
(ab137496)

All lanes : Anti-NR2F6/EAR-2 antibody (ab137496) at 1/500 dilution

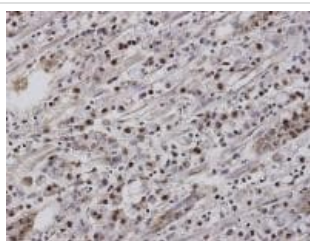
Lane 1 : NIH 3T3 whole cell lysate

Lane 2 : JC whole cell lysate

Lysates/proteins at 30 µg per lane.

Predicted band size: 43 kDa

10% SDS PAGE



Immunohistochemistry (Formalin/PFA-fixed paraffin-embedded sections) - Anti-NR2F6/EAR-2 antibody
(ab137496)

Immunohistochemical analysis of paraffin-embedded Human gastric carcinoma tissue, labelling NR2F6/EAR-2 with ab137496 at 1/100 dilution.

Please note: All products are "FOR RESEARCH USE ONLY. NOT FOR USE IN DIAGNOSTIC PROCEDURES"

Our Abpromise to you: Quality guaranteed and expert technical support

- Replacement or refund for products not performing as stated on the datasheet
- Valid for 12 months from date of delivery
- Response to your inquiry within 24 hours
- We provide support in Chinese, English, French, German, Japanese and Spanish
- Extensive multi-media technical resources to help you
- We investigate all quality concerns to ensure our products perform to the highest standards

If the product does not perform as described on this datasheet, we will offer a refund or replacement. For full details of the Abpromise, please visit <https://www.abcam.com/abpromise> or contact our technical team.

Terms and conditions

- Guarantee only valid for products bought direct from Abcam or one of our authorized distributors