

Product datasheet

Anti-Nuclear Matrix Protein p84 antibody [EPR5661] ab125019

Recombinant RabMAb

[1 References](#) [4 Images](#)

Overview

Product name	Anti-Nuclear Matrix Protein p84 antibody [EPR5661]
Description	Rabbit monoclonal [EPR5661] to Nuclear Matrix Protein p84
Host species	Rabbit
Tested applications	Suitable for: WB, IHC-P, ICC/IF Unsuitable for: Flow Cyt or IP
Species reactivity	Reacts with: Human
Immunogen	Synthetic peptide within Human Nuclear Matrix Protein p84 aa 1-100. The exact sequence is proprietary.
Positive control	HeLa, U-87 MG and 293T cell lysates; Human stomach adenocarcinoma tissue; 293T cells
General notes	<p>This product is a recombinant monoclonal antibody, which offers several advantages including:</p> <ul style="list-style-type: none"> - High batch-to-batch consistency and reproducibility - Improved sensitivity and specificity - Long-term security of supply - Animal-free production <p>For more information see here.</p> <p>Our RabMAb[®] technology is a patented hybridoma-based technology for making rabbit monoclonal antibodies. For details on our patents, please refer to RabMAb[®] patents.</p> <p>Mouse, Rat: We have preliminary internal testing data to indicate this antibody may not react with these species. Please contact us for more information.</p>

Properties

Form	Liquid
Storage instructions	Shipped at 4°C. Store at -20°C. Stable for 12 months at -20°C.
Storage buffer	<p>pH: 7.20</p> <p>Preservative: 0.01% Sodium azide</p> <p>Constituents: 9% PBS, 40% Glycerol (glycerin, glycerine), 0.05% BSA, 50% Tissue culture supernatant</p>

Purity	Protein A purified
Clonality	Monoclonal
Clone number	EPR5661
Isotype	IgG

Applications

The Abpromise guarantee Our **Abpromise guarantee** covers the use of ab125019 in the following tested applications.

The application notes include recommended starting dilutions; optimal dilutions/concentrations should be determined by the end user.

Application	Abreviews	Notes
WB		1/1000 - 1/10000. Detects a band of approximately 84 kDa (predicted molecular weight: 76 kDa).
IHC-P		1/50 - 1/100. Perform heat mediated antigen retrieval before commencing with IHC staining protocol.
ICC/IF		1/100 - 1/250.

Application notes Is unsuitable for Flow Cyt or IP.

Target

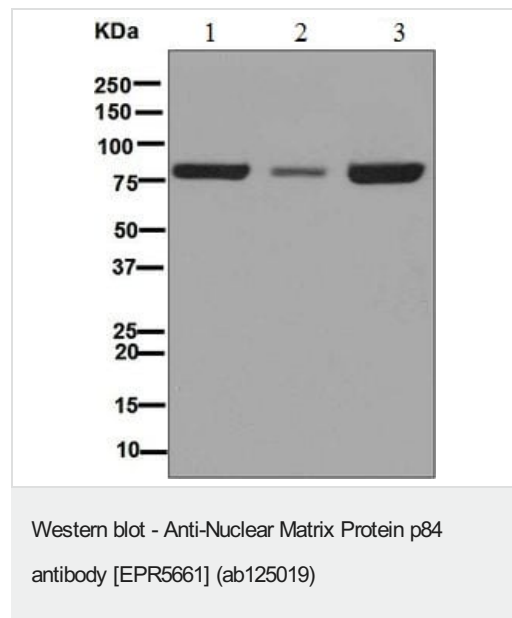
Function	<p>Component of the THO subcomplex of the TREX complex. The TREX complex specifically associates with spliced mRNA and not with unspliced pre-mRNA. It is recruited to spliced mRNAs by a transcription-independent mechanism. Binds to mRNA upstream of the exon-junction complex (EJC) and is recruited in a splicing- and cap-dependent manner to a region near the 5' end of the mRNA where it functions in mRNA export. The recruitment occurs via an interaction between THOC4 and the cap-binding protein NCBP1. DDX39B functions as a bridge between THOC4 and the THO complex. The TREX complex is essential for the export of Kaposi's sarcoma-associated herpesvirus (KSHV) intronless mRNAs and infectious virus production. The recruitment of the TREX complex to the intronless viral mRNA occurs via an interaction between KSHV ORF57 protein and THOC4.</p> <p>Regulates transcriptional elongation of a subset of genes. Participates in an apoptotic pathway which is characterized by activation of caspase-6, increases in the expression of BAK1 and BCL2L1 and activation of NF-kappa-B. This pathway does not require p53/TP53, nor does the presence of p53/TP53 affect the efficiency of cell killing. Activates a G2/M cell cycle checkpoint prior to the onset of apoptosis. Apoptosis is inhibited by association with RB1.</p>
Tissue specificity	Ubiquitous. Expressed in various cancer cell lines. Expressed at very low levels in normal breast epithelial cells and highly expressed in breast tumors. Expression is strongly associated with an aggressive phenotype of breast tumors and expression correlates with tumor size and the metastatic state of the tumor progression.
Sequence similarities	Contains 1 death domain.
Domain	An intact death domain is needed for apoptosis.
Post-translational modifications	Expression is altered specifically during apoptosis and is accompanied by the appearance of novel forms with smaller apparent molecular mass.
Cellular localization	Cytoplasm and Nucleus speckle. Nucleus > nucleoplasm. Nucleus matrix. Cytoplasm. Can shuttle

between the nucleus and cytoplasm. Nuclear localization is required for induction of apoptotic cell death. Translocates to the cytoplasm during the early phase of apoptosis execution.

Form

Nuclear (Isoform 1) and Cytoplasmic (Isoform 1 and 2).

Images



All lanes : Anti-Nuclear Matrix Protein p84 antibody [EPR5661] (ab125019) at 1/1000 dilution

Lane 1 : Hela cell lysate

Lane 2 : U-87 MG (Human glioblastoma-astrocytoma epithelial cell line) cell lysate

Lane 3 : 293T (Human embryonic kidney epithelial cell) cell lysate

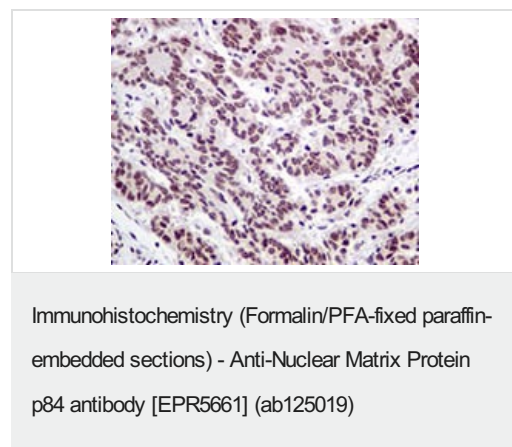
Lysates/proteins at 10 µg per lane.

Secondary

All lanes : HRP labelled goat anti-rabbit at 1/2000 dilution

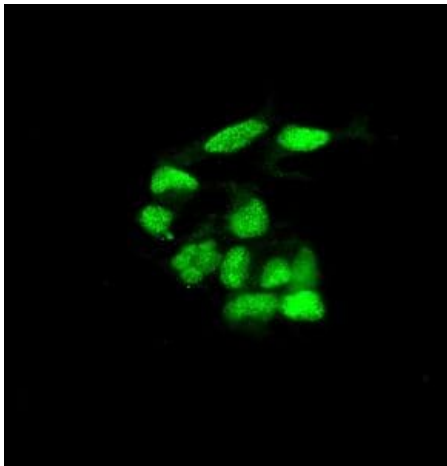
Predicted band size: 76 kDa

Observed band size: 84 kDa



ab125019, at 1/50 dilution, staining Nuclear Matrix Protein p84 in paraffin-embedded Human stomach adenocarcinoma tissue by Immunohistochemistry.

Perform heat mediated antigen retrieval before commencing with IHC staining protocol.



ab125019, at 1/100 dilution, staining Nuclear Matrix Protein p84 in 293T cells by Immunofluorescence.

Immunocytochemistry/ Immunofluorescence - Anti-Nuclear Matrix Protein p84 antibody [EPR5661] (ab125019)

Why choose a recombinant antibody?



Research with confidence
Consistent and reproducible results



Long-term and scalable supply
Recombinant technology



Success from the first experiment
Confirmed specificity



Ethical standards compliant
Animal-free production

Anti-Nuclear Matrix Protein p84 antibody [EPR5661] (ab125019)

Please note: All products are "FOR RESEARCH USE ONLY. NOT FOR USE IN DIAGNOSTIC PROCEDURES"

Our Abpromise to you: Quality guaranteed and expert technical support

- Replacement or refund for products not performing as stated on the datasheet
- Valid for 12 months from date of delivery
- Response to your inquiry within 24 hours
- We provide support in Chinese, English, French, German, Japanese and Spanish
- Extensive multi-media technical resources to help you
- We investigate all quality concerns to ensure our products perform to the highest standards

If the product does not perform as described on this datasheet, we will offer a refund or replacement. For full details of the Abpromise, please visit <https://www.abcam.com/abpromise> or contact our technical team.

Terms and conditions

- Guarantee only valid for products bought direct from Abcam or one of our authorized distributors