


## Product datasheet

### Anti-Nucleolin antibody ab50279

[25 References](#) [1 Image](#)

#### Overview

<b>Product name</b>	Anti-Nucleolin antibody
<b>Description</b>	Rabbit polyclonal to Nucleolin
<b>Host species</b>	Rabbit
<b>Tested applications</b>	<b>Suitable for:</b> WB, Flow Cyt, ICC/IF, IP
<b>Species reactivity</b>	<b>Reacts with:</b> Mouse, Rat, Human <b>Predicted to work with:</b> Cynomolgus monkey, Orangutan 
<b>Immunogen</b>	Synthetic peptide: VKLAKAGKNQGDPKKMA conjugated to KLH, corresponding to N terminal amino acids 2-17 of Human Nucleolin with a C-terminal added cysteine.

 [Run BLAST with](#)

 [Run BLAST with](#)

#### General notes

The Life Science industry has been in the grips of a reproducibility crisis for a number of years. Abcam is leading the way in addressing this with our range of recombinant monoclonal antibodies and knockout edited cell lines for gold-standard validation. Please check that this product meets your needs before purchasing.

If you have any questions, special requirements or concerns, please send us an inquiry and/or contact our Support team ahead of purchase. Recommended alternatives for this product can be found below, along with publications, customer reviews and Q&As

#### Properties

<b>Form</b>	Liquid
<b>Storage instructions</b>	Shipped at 4°C. Store at +4°C short term (1-2 weeks). Upon delivery aliquot. Store at -20°C or -80°C. Avoid freeze / thaw cycle.
<b>Storage buffer</b>	pH: 7.40 Preservative: 0.097% Sodium azide Constituent: 0.0268% PBS
<b>Purity</b>	Immunogen affinity purified
<b>Purification notes</b>	This antibody has been affinity-purified using the immunizing peptide immobilized on agarose.
<b>Clonality</b>	Polyclonal

## Applications

### The Abpromise guarantee

Our **Abpromise guarantee** covers the use of ab50279 in the following tested applications.

The application notes include recommended starting dilutions; optimal dilutions/concentrations should be determined by the end user.

Application	Abreviews	Notes
WB		Use at an assay dependent concentration.
Flow Cyt		Use at an assay dependent concentration. PubMed: 20814900 <b>ab171870</b> - Rabbit polyclonal IgG, is suitable for use as an isotype control with this antibody.
ICC/IF		Use a concentration of 10 - 20 µg/ml.
IP		Use at an assay dependent concentration. 1-2 ug/ml immunoprecipitates Nucleolin from 250 ug RIPA lysate of human HeLa cells.

## Target

### Function

Nucleolin is the major nucleolar protein of growing eukaryotic cells. It is found associated with intranucleolar chromatin and pre-ribosomal particles. It induces chromatin decondensation by binding to histone H1. It is thought to play a role in pre-rRNA transcription and ribosome assembly. May play a role in the process of transcriptional elongation. Binds RNA oligonucleotides with 5'-UUAGGG-3' repeats more tightly than the telomeric single-stranded DNA 5'-TTAGGG-3' repeats.

### Sequence similarities

Contains 4 RRM (RNA recognition motif) domains.

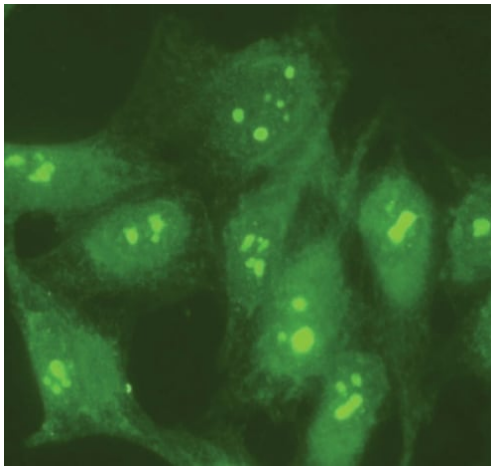
### Post-translational modifications

Some glutamate residues are glycosylated by TTLL8. This modification occurs exclusively on glutamate residues and results in a glycine chain on the gamma-carboxyl group.

### Cellular localization

Nucleus > nucleolus. Cytoplasm. Localized in cytoplasmic mRNP granules containing untranslated mRNAs.

## Images



Immunocytochemistry/ Immunofluorescence - Anti-Nucleolin antibody (ab50279)

### Indirect Immunofluorescence

Human HeLa cells were fixed and permeabilized with 4% paraformaldehyde followed by 0.5% Triton X-100. Fixed cells were stained with 10 µg/mL Anti-Nucleolin (ab50279). The antibody was developed with Goat Anti-Rabbit IgG, FITC conjugate.

**Please note:** All products are "FOR RESEARCH USE ONLY. NOT FOR USE IN DIAGNOSTIC PROCEDURES"

### Our Abpromise to you: Quality guaranteed and expert technical support

---

- Replacement or refund for products not performing as stated on the datasheet
- Valid for 12 months from date of delivery
- Response to your inquiry within 24 hours
- We provide support in Chinese, English, French, German, Japanese and Spanish
- Extensive multi-media technical resources to help you
- We investigate all quality concerns to ensure our products perform to the highest standards

If the product does not perform as described on this datasheet, we will offer a refund or replacement. For full details of the Abpromise, please visit <https://www.abcam.com/abpromise> or contact our technical team.

### Terms and conditions

---

- Guarantee only valid for products bought direct from Abcam or one of our authorized distributors