

Product datasheet

Anti-Nuf2 antibody [EPR13018(B)] ab176556

Recombinant RabMAb

★★★★★ [1 Abreviews](#) [4 References](#) [7 Images](#)

Overview

Product name	Anti-Nuf2 antibody [EPR13018(B)]
Description	Rabbit monoclonal [EPR13018(B)] to Nuf2
Host species	Rabbit
Tested applications	Suitable for: Flow Cyt (Intra), WB, ICC/IF Unsuitable for: IHC-P
Species reactivity	Reacts with: Human
Immunogen	Synthetic peptide within Human Nuf2 aa 1-100 (Cysteine residue). The exact sequence is proprietary. Database link: Q9BZD4
Positive control	293T, A431, HeLa and Human fetal liver lysates; 293T cells. HEK 293 cells.
General notes	<p>This product is a recombinant monoclonal antibody, which offers several advantages including:</p> <ul style="list-style-type: none"> - High batch-to-batch consistency and reproducibility - Improved sensitivity and specificity - Long-term security of supply - Animal-free production <p>For more information see here.</p> <p>Our RabMAb[®] technology is a patented hybridoma-based technology for making rabbit monoclonal antibodies. For details on our patents, please refer to RabMAb[®] patents.</p> <p>Mouse, Rat: We have preliminary internal testing data to indicate this antibody may not react with these species. Please contact us for more information.</p>

Properties

Form	Liquid
Storage instructions	Shipped at 4°C. Store at +4°C short term (1-2 weeks). Upon delivery aliquot. Store at -20°C long term. Avoid freeze / thaw cycle.
Storage buffer	Preservative: 0.01% Sodium azide Constituents: PBS, 0.05% BSA, 40% Glycerol (glycerin, glycerine)
Purity	Protein A purified

Clonality	Monoclonal
Clone number	EPR13018(B)
Isotype	IgG

Applications

The Abpromise guarantee Our **Abpromise guarantee** covers the use of ab176556 in the following tested applications. The application notes include recommended starting dilutions; optimal dilutions/concentrations should be determined by the end user.

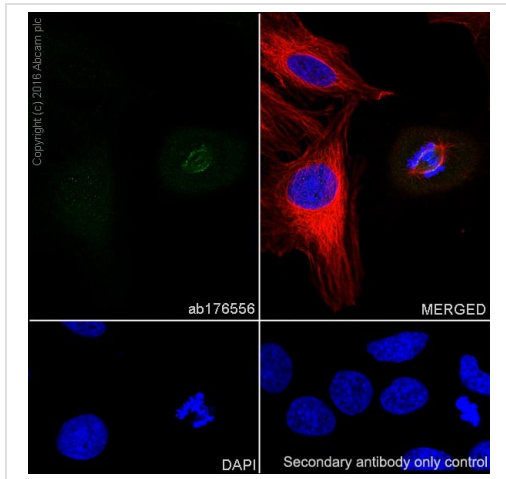
Application	Abreviews	Notes
Flow Cyt (Intra)		1/10 - 1/100. ab172730 - Rabbit monoclonal IgG, is suitable for use as an isotype control with this antibody.
WB		1/1000 - 1/2000. Predicted molecular weight: 54 kDa.
ICC/IF	★★★★★ (1)	1/500 - 1/1000.

Application notes Is unsuitable for IHC-P.

Target

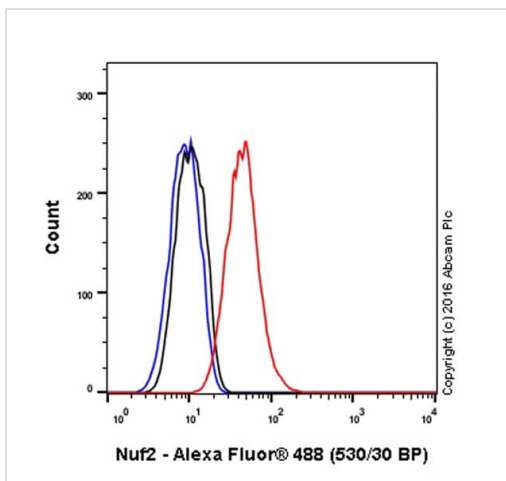
Function	Acts as a component of the essential kinetochore-associated NDC80 complex, which is required for chromosome segregation and spindle checkpoint activity. Required for kinetochore integrity and the organization of stable microtubule binding sites in the outer plate of the kinetochore.
Sequence similarities	Belongs to the NUF2 family.
Post-translational modifications	Can be phosphorylated by AURKA and AURKB.
Cellular localization	Nucleus. Chromosome > centromere > kinetochore. Localizes to kinetochores from late prophase to anaphase. Localizes specifically to the outer plate of the kinetochore.

Images



Immunocytochemistry/ Immunofluorescence - Anti-Nuf2 antibody [EPR13018(B)] (ab176556)

ab176556 staining Nuf2 in HeLa (human cervix adenocarcinoma) cells by ICC/IF (Immunocytochemistry/immunofluorescence). Cells were fixed with 4% Paraformaldehyde and permeabilized with 0.1% Triton X-100. Samples were incubated with primary antibody at a dilution of 1/1000. A goat anti rabbit IgG (Alexa Fluor® 488) ([ab150077](#)) was used as the secondary antibody at a dilution of 1/1000. [ab195889](#) was used as a tubulin counterstain at a dilution of 1/200 and DAPI was used as a nuclear counterstain.

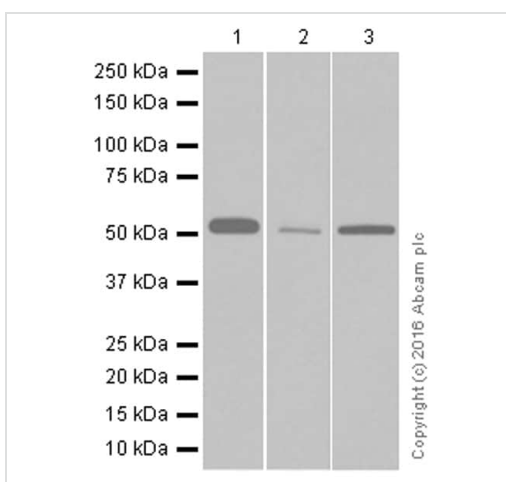


Flow Cytometry (Intracellular) - Anti-Nuf2 antibody [EPR13018(B)] (ab176556)

ab176556 staining Nuf2 in the human cell line 293T (Human epithelial cell line from embryonic kidney) by intracellular flow cytometry. Cells were fixed with 4% paraformaldehyde and the sample was incubated with the primary antibody at a dilution of 1/60. A goat anti rabbit IgG (Alexa Fluor® 488) at a dilution of 1/2000 was used as the secondary antibody.

Isotype control: Rabbit monoclonal IgG (Black)

Unlabelled control: Cell without incubation with primary antibody and secondary antibody (Blue)



Western blot - Anti-Nuf2 antibody [EPR13018(B)] (ab176556)

All lanes : Anti-Nuf2 antibody [EPR13018(B)] (ab176556) at 1/2000 dilution

Lane 1 : HEK-293 (Human epithelial cell line from embryonic kidney) whole cell lysate

Lane 2 : A431 (Human epidermoid carcinoma cell line) whole cell lysate

Lane 3 : HeLa (Human epithelial cell line from cervix adenocarcinoma) whole cell lysate

Lysates/proteins at 20 µg per lane.

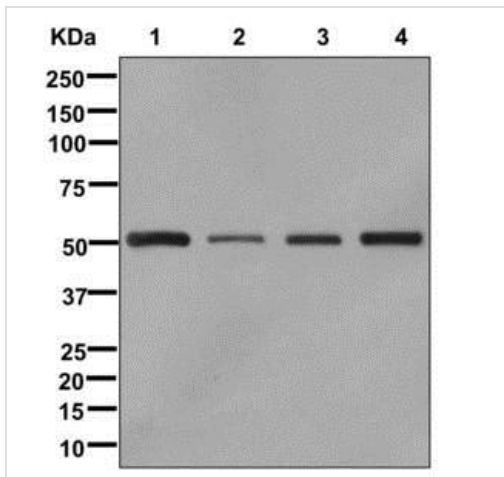
Secondary

All lanes : Anti-Rabbit IgG (HRP), specific to the non-reduced form of IgG at 1/2000 dilution

Predicted band size: 54 kDa

Additional bands at: 54 kDa. We are unsure as to the identity of these extra bands.

Blocking and diluting buffer: 5% NFDM/TBST



Western blot - Anti-Nuf2 antibody [EPR13018(B)]
(ab176556)

All lanes : Anti-Nuf2 antibody [EPR13018(B)] (ab176556) at 1/1000 dilution

Lane 1 : 293T cell lysate

Lane 2 : Human fetal liver lysate

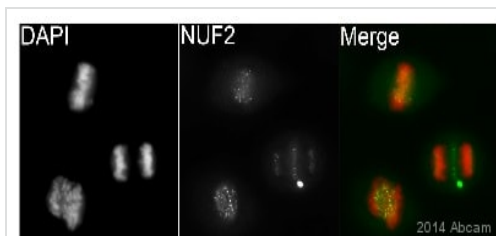
Lane 3 : A431 cell lysate

Lane 4 : HeLa cell lysate

Lysates/proteins at 10 µg per lane.

Developed using the ECL technique.

Predicted band size: 54 kDa

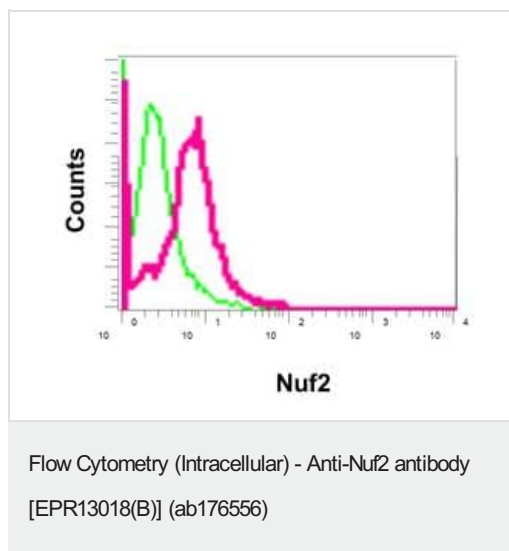


Immunocytochemistry/ Immunofluorescence - Anti-Nuf2 antibody [EPR13018(B)] (ab176556)

This image is courtesy of an Abreview submitted by Kirk McManus

ab176556 staining Nuf2 in HeLa cells by ICC/IF

(Immunocytochemistry/immunofluorescence). Cells were fixed with paraformaldehyde and permeabilized with 0.5% Triton X-100 in PBS. Samples were incubated with primary antibody (1/500 in PBS) for 1 hour at 22°C. **ab150081**, an Alexa Fluor® 488-conjugated goat anti-rabbit IgG polyclonal (1/200) was used as the secondary antibody. Counterstained with DAPI.



Intracellular Flow Cytometry analysis of permeabilized 293T cells labeling Nuf2 (red), using ab176556 at a 1/10 dilution, or negative control rabbit IgG (green)

Why choose a recombinant antibody?

<p>Research with confidence Consistent and reproducible results</p>	<p>Long-term and scalable supply Recombinant technology</p>
<p>Success from the first experiment Confirmed specificity</p>	<p>Ethical standards compliant Animal-free production</p>

Anti-Nuf2 antibody [EPR13018(B)] (ab176556)

Please note: All products are "FOR RESEARCH USE ONLY. NOT FOR USE IN DIAGNOSTIC PROCEDURES"

Our Abpromise to you: Quality guaranteed and expert technical support

- Replacement or refund for products not performing as stated on the datasheet
- Valid for 12 months from date of delivery
- Response to your inquiry within 24 hours
- We provide support in Chinese, English, French, German, Japanese and Spanish
- Extensive multi-media technical resources to help you
- We investigate all quality concerns to ensure our products perform to the highest standards

If the product does not perform as described on this datasheet, we will offer a refund or replacement. For full details of the Abpromise, please visit <https://www.abcam.com/abpromise> or contact our technical team.

Terms and conditions

- Guarantee only valid for products bought direct from Abcam or one of our authorized distributors