


Product datasheet

Anti-NuMA antibody [EP3976] ab109262

Recombinant RabMAb

[18 References](#) [6 Images](#)

Overview

Product name	Anti-NuMA antibody [EP3976]
Description	Rabbit monoclonal [EP3976] to NuMA
Host species	Rabbit
Tested applications	Suitable for: WB, IHC-P, ICC/IF Unsuitable for: Flow Cyt or IP
Species reactivity	Reacts with: Human Predicted to work with: Mouse, Rat 
Immunogen	Synthetic peptide. This information is proprietary to Abcam and/or its suppliers.
Positive control	K562, HeLa, MCF7, Raji, SW480, CACO2, and MOLT4 cell lysates; Human breast carcinoma, normal breast and colonic adenocarcinoma tissues; HeLa cells.
General notes	<p>This product is a recombinant monoclonal antibody, which offers several advantages including:</p> <ul style="list-style-type: none"> - High batch-to-batch consistency and reproducibility - Improved sensitivity and specificity - Long-term security of supply - Animal-free production <p>For more information see here.</p> <p>Our RabMAb[®] technology is a patented hybridoma-based technology for making rabbit monoclonal antibodies. For details on our patents, please refer to RabMAb[®] patents.</p>

Properties

Form	Liquid
Storage instructions	Shipped at 4°C. Store at -20°C. Stable for 12 months at -20°C.
Storage buffer	pH: 7.20 Preservative: 0.01% Sodium azide Constituents: 59% PBS, 40% Glycerol (glycerin, glycerine), 0.05% BSA
Purity	Protein A purified
Clonality	Monoclonal
Clone number	EP3976

Isotype

IgG

Applications

The Abpromise guarantee

Our **Abpromise guarantee** covers the use of ab109262 in the following tested applications.

The application notes include recommended starting dilutions; optimal dilutions/concentrations should be determined by the end user.

Application	Abreviews	Notes
WB		1/1000 - 1/10000. Predicted molecular weight: 238 kDa.
IHC-P		1/250 - 1/500. Perform heat mediated antigen retrieval with citrate buffer pH 6 before commencing with IHC staining protocol.
ICC/IF		1/100 - 1/250.

Application notes

Is unsuitable for Flow Cyt or IP.

Target

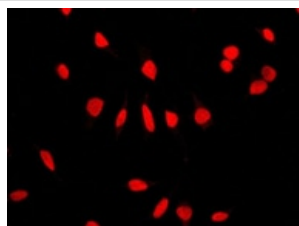
Function

May be a structural component of the nucleus.

Cellular localization

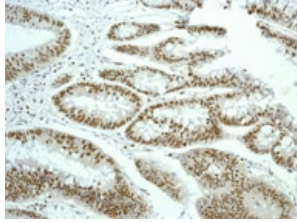
Nucleus. Chromosome. Dissociates from condensing chromosomes during early prophase, before the complete disintegration of the nuclear lamina. As mitosis progresses it reassociates with telophase chromosomes very early during nuclear reformation, before substantial accumulation of lamins on chromosomal surfaces is evident.

Images



ab109262, at 1/100 dilution, staining NuMA in HeLa cells by Immunofluorescence.

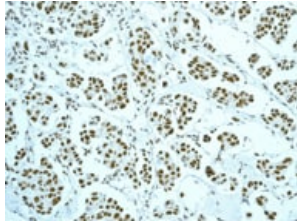
Immunocytochemistry/ Immunofluorescence - Anti-NuMA antibody [EP3976] (ab109262)



Immunohistochemistry (Formalin/PFA-fixed paraffin-embedded sections) - Anti-NuMA antibody [EP3976] (ab109262)

ab109262, at 1/250 dilution, staining NuMA in paraffin-embedded Human colonic adenocarcinoma by Immunohistochemistry.

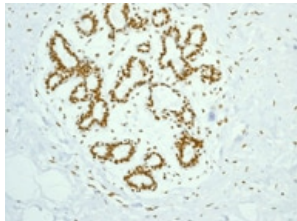
Perform heat mediated antigen retrieval with citrate buffer pH 6 before commencing with IHC staining protocol.



Immunohistochemistry (Formalin/PFA-fixed paraffin-embedded sections) - Anti-NuMA antibody [EP3976] (ab109262)

ab109262, at 1/250 dilution, staining NuMA in paraffin-embedded Human breast carcinoma by Immunohistochemistry.

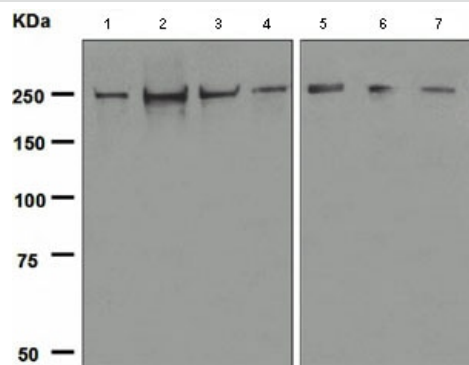
Perform heat mediated antigen retrieval with citrate buffer pH 6 before commencing with IHC staining protocol.



Immunohistochemistry (Formalin/PFA-fixed paraffin-embedded sections) - Anti-NuMA antibody [EP3976] (ab109262)

ab109262, at 1/250 dilution, staining NuMA in paraffin-embedded Human breast tissue by Immunohistochemistry.

Perform heat mediated antigen retrieval with citrate buffer pH 6 before commencing with IHC staining protocol.



Western blot - Anti-NuMA antibody [EP3976] (ab109262)

All lanes : Anti-NuMA antibody [EP3976] (ab109262) at 1/1000 dilution

Lane 1 : K562 cell lysate

Lane 2 : HeLa cell lysate

Lane 3 : MCF7 cell lysate

Lane 4 : Raji cell lysate

Lane 5 : SW480 cell lysate





Lane 6 : CACO2 cell lysate

Lane 7 : MOLT4 cell lysate

Lysates/proteins at 10 µg per lane.

Predicted band size: 238 kDa

Why choose a recombinant antibody?

 <p>Research with confidence Consistent and reproducible results</p>	 <p>Long-term and scalable supply Recombinant technology</p>
 <p>Success from the first experiment Confirmed specificity</p>	 <p>Ethical standards compliant Animal-free production</p>

Anti-NuMA antibody [EP3976] (ab109262)

Please note: All products are "FOR RESEARCH USE ONLY. NOT FOR USE IN DIAGNOSTIC PROCEDURES"

Our Abpromise to you: Quality guaranteed and expert technical support

- Replacement or refund for products not performing as stated on the datasheet
- Valid for 12 months from date of delivery
- Response to your inquiry within 24 hours
- We provide support in Chinese, English, French, German, Japanese and Spanish
- Extensive multi-media technical resources to help you
- We investigate all quality concerns to ensure our products perform to the highest standards

If the product does not perform as described on this datasheet, we will offer a refund or replacement. For full details of the Abpromise, please visit <https://www.abcam.com/abpromise> or contact our technical team.

Terms and conditions

- Guarantee only valid for products bought direct from Abcam or one of our authorized distributors