

Product datasheet

Anti-NYS48 antibody ab95970

[4 Images](#)

Overview

Product name	Anti-NYS48 antibody
Description	Rabbit polyclonal to NYS48
Host species	Rabbit
Tested applications	Suitable for: WB, IHC-P, ICC/IF
Species reactivity	Reacts with: Human
Immunogen	The immunogen is a recombinant protein corresponding to a region within amino acids 216-410 of human NYS48
Positive control	K562 and HeLa lysates
General notes	<p>The Life Science industry has been in the grips of a reproducibility crisis for a number of years. Abcam is leading the way in addressing this with our range of recombinant monoclonal antibodies and knockout edited cell lines for gold-standard validation. Please check that this product meets your needs before purchasing.</p> <p>If you have any questions, special requirements or concerns, please send us an inquiry and/or contact our Support team ahead of purchase. Recommended alternatives for this product can be found below, along with publications, customer reviews and Q&As</p>

Properties

Form	Liquid
Storage instructions	Shipped at 4°C. Upon delivery aliquot. Store at -20°C or -80°C. Avoid freeze / thaw cycle.
Storage buffer	pH: 7.00 Preservative: 0.01% Thimerosal (merthiolate) Constituents: 1.21% Tris, 0.75% Glycine, 10% Glycerol (glycerin, glycerine)
Purity	Immunogen affinity purified
Clonality	Polyclonal
Isotype	IgG

Applications

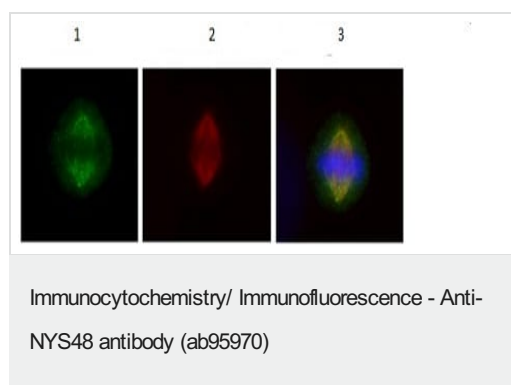
The Abpromise guarantee Our **Abpromise guarantee** covers the use of ab95970 in the following tested applications.

The application notes include recommended starting dilutions; optimal dilutions/concentrations should be determined by the end user.

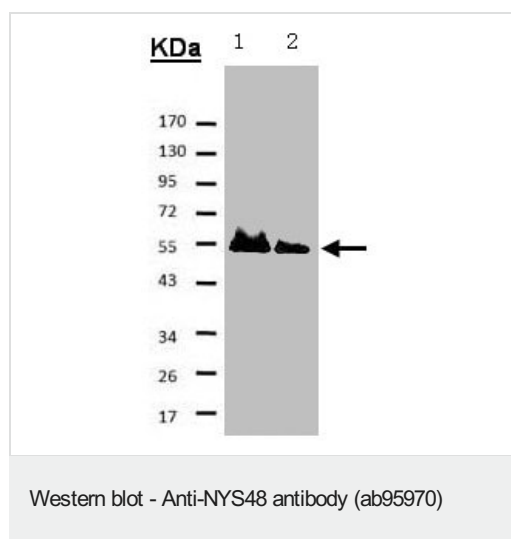
Application	Abreviews	Notes
WB		1/500 - 1/2000. Predicted molecular weight: 45 kDa.
IHC-P		1/50 - 1/500.
ICC/IF		1/100 - 1/200.

Target

Images



Immunofluorescenc analysis of human osteosarcoma cell line U2OS using ab95970 against NYS48 (1), alpha tubulin (2) and merged with DAP1 (3) at 1/50-1/200 dilution

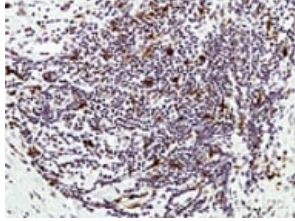


All lanes : Anti-NYS48 antibody (ab95970) at 1/500 dilution

Lane 1 : His-Hice 1 (2x)

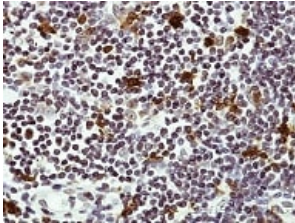
Lane 2 : His-Hice 1 (1x)

Predicted band size: 45 kDa



Immunohistochemical analysis of paraffin-embedded human lymph tissue using ab95970 at 1/50 dilution. (Image 20x)

Immunohistochemistry (Formalin/PFA-fixed paraffin-embedded sections) - Anti-NYS48 antibody (ab95970)



Immunohistochemical analysis of paraffin-embedded human lymph tissue using ab95970 at 1/50 dilution. (Image 40x)

Immunohistochemistry (Formalin/PFA-fixed paraffin-embedded sections) - Anti-NYS48 antibody (ab95970)

Please note: All products are "FOR RESEARCH USE ONLY. NOT FOR USE IN DIAGNOSTIC PROCEDURES"

Our Abpromise to you: Quality guaranteed and expert technical support

- Replacement or refund for products not performing as stated on the datasheet
- Valid for 12 months from date of delivery
- Response to your inquiry within 24 hours

- We provide support in Chinese, English, French, German, Japanese and Spanish
- Extensive multi-media technical resources to help you
- We investigate all quality concerns to ensure our products perform to the highest standards

If the product does not perform as described on this datasheet, we will offer a refund or replacement. For full details of the Abpromise, please visit <https://www.abcam.com/abpromise> or contact our technical team.

Terms and conditions

- Guarantee only valid for products bought direct from Abcam or one of our authorized distributors