


Product datasheet

Anti-Orai2 antibody ab155216

[1 References](#) [3 Images](#)

Overview

Product name	Anti-Orai2 antibody
Description	Rabbit polyclonal to Orai2
Host species	Rabbit
Tested applications	Suitable for: WB, IHC-P
Species reactivity	Reacts with: Mouse, Rat, Human Predicted to work with: Cow 
Immunogen	Recombinant fragment corresponding to Human Orai2 aa 1-248. Database link: Q96SN7
Positive control	WB: H1299 whole cell lysate. Rat and mouse brain tissue extract. IHC-P: Human colon carcinoma tissue.
General notes	<p>The Life Science industry has been in the grips of a reproducibility crisis for a number of years. Abcam is leading the way in addressing this with our range of recombinant monoclonal antibodies and knockout edited cell lines for gold-standard validation. Please check that this product meets your needs before purchasing.</p> <p>If you have any questions, special requirements or concerns, please send us an inquiry and/or contact our Support team ahead of purchase. Recommended alternatives for this product can be found below, along with publications, customer reviews and Q&As</p>

Properties

Form	Liquid
Storage instructions	Shipped at 4°C. Store at +4°C short term (1-2 weeks). Upon delivery aliquot. Store at -20°C or -80°C. Avoid freeze / thaw cycle.
Storage buffer	pH: 7.00 Preservative: 0.01% Thimerosal (merthiolate) Constituents: 78.99% PBS, 1% BSA, 20% Glycerol (glycerin, glycerine)
Purity	Immunogen affinity purified
Clonality	Polyclonal
Isotype	IgG

Applications

The Abpromise guarantee Our **Abpromise guarantee** covers the use of ab155216 in the following tested applications. The application notes include recommended starting dilutions; optimal dilutions/concentrations should be determined by the end user.

Application	Abreviews	Notes
WB		1/500 - 1/3000. Predicted molecular weight: 29 kDa.
IHC-P		1/100 - 1/1000.

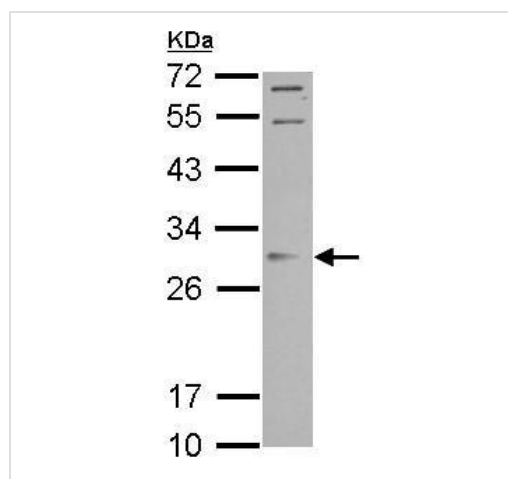
Target

Function Ca(2+) release-activated Ca(2+)-like (CRAC-like) channel subunit which mediates Ca(2+) influx and increase in Ca(2+)-selective current by synergy with the Ca(2+) sensor, STIM1.

Sequence similarities Belongs to the Orai family.

Cellular localization Membrane.

Images

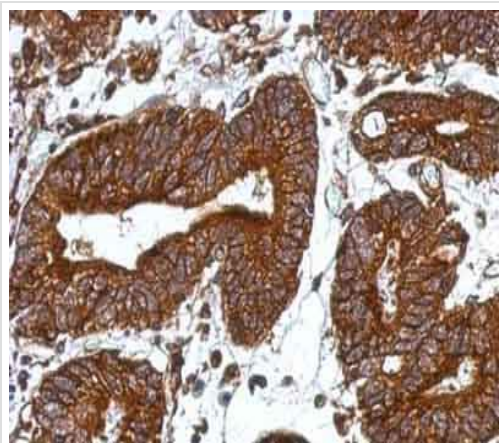


Anti-Orai2 antibody (ab155216) at 1/1000 dilution + H1299 whole cell lysate at 30 µg

Predicted band size: 29 kDa

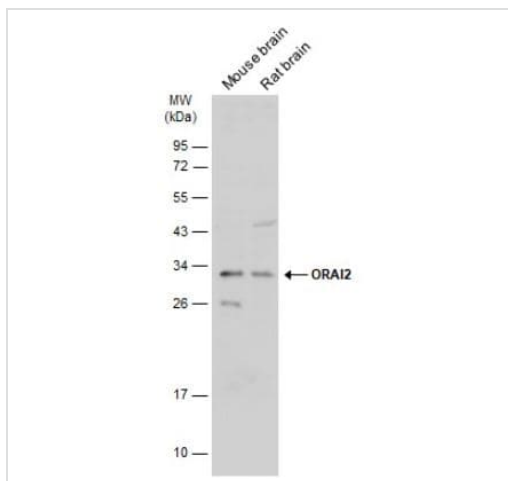
12% SDS PAGE

Western blot - Anti-Orai2 antibody (ab155216)



Immunohistochemistry (Formalin/PFA-fixed paraffin-embedded sections) - Anti-Orai2 antibody (ab155216)

Immunohistochemical analysis of paraffin-embedded Human colon carcinoma tissue labeling Orai2 with ab155216 at 1/500 dilution.



Western blot - Anti-Orai2 antibody (ab155216)

All lanes : Anti-Orai2 antibody (ab155216) at 1/500 dilution

Lane 1 : Mouse brain tissue extract

Lane 2 : Rat brain tissue extract

Lysates/proteins at 50 µg per lane.

Predicted band size: 29 kDa

12% SDS-PAGE

Please note: All products are "FOR RESEARCH USE ONLY. NOT FOR USE IN DIAGNOSTIC PROCEDURES"

Our Abpromise to you: Quality guaranteed and expert technical support

- Replacement or refund for products not performing as stated on the datasheet
- Valid for 12 months from date of delivery
- Response to your inquiry within 24 hours
- We provide support in Chinese, English, French, German, Japanese and Spanish
- Extensive multi-media technical resources to help you
- We investigate all quality concerns to ensure our products perform to the highest standards

If the product does not perform as described on this datasheet, we will offer a refund or replacement. For full details of the Abpromise, please visit <https://www.abcam.com/abpromise> or contact our technical team.

Terms and conditions

- Guarantee only valid for products bought direct from Abcam or one of our authorized distributors