


Product datasheet

Anti-ORC1 antibody ab85830

[4 References](#) [2 Images](#)

Overview

Product name	Anti-ORC1 antibody
Description	Rabbit polyclonal to ORC1
Host species	Rabbit
Tested applications	Suitable for: WB, IP
Species reactivity	Reacts with: Human Predicted to work with: Chimpanzee, Gorilla 
Immunogen	Synthetic peptide, corresponding to a region between residues 811 and 861 of human ORC1 (NP_004144.2)
Positive control	HeLa and 293T whole cell lysates.
General notes	<p>The Life Science industry has been in the grips of a reproducibility crisis for a number of years. Abcam is leading the way in addressing this with our range of recombinant monoclonal antibodies and knockout edited cell lines for gold-standard validation. Please check that this product meets your needs before purchasing.</p> <p>If you have any questions, special requirements or concerns, please send us an inquiry and/or contact our Support team ahead of purchase. Recommended alternatives for this product can be found below, along with publications, customer reviews and Q&As</p>

Properties

Form	Liquid
Storage instructions	Shipped at 4°C. Upon delivery aliquot and store at -20°C. Avoid freeze / thaw cycles.
Storage buffer	pH: 7 Preservative: 0.09% Sodium azide Constituent: Tris citrate/phosphate
Purity	Immunogen affinity purified
Purification notes	ab85830 was affinity purified using an epitope specific to ORC1 immobilized on solid support.
Clonality	Polyclonal
Isotype	IgG

Applications

Applications

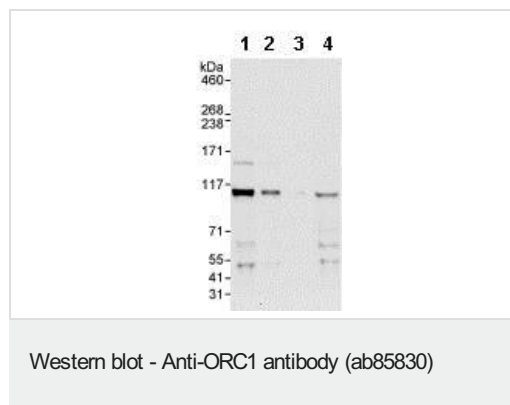
The Abpromise guarantee Our **Abpromise guarantee** covers the use of ab85830 in the following tested applications. The application notes include recommended starting dilutions; optimal dilutions/concentrations should be determined by the end user.

Application	Abreviews	Notes
WB		1/2000 - 1/10000. Detects a band of approximately 97 kDa (predicted molecular weight: 97 kDa).
IP		Use at 2-5 µg/mg of lysate.

Target

Function	Component of the origin recognition complex (ORC) that binds origins of replication. DNA-binding is ATP-dependent, however specific DNA sequences that define origins of replication have not been identified so far. ORC is required to assemble the pre-replication complex necessary to initiate DNA replication.
Sequence similarities	Belongs to the ORC1 family. Contains 1 BAH domain.
Developmental stage	Expression is cell-cycle regulated, it starts to accumulate in mid-G1 phase, reaches a peak at the G1/S boundary, and decreases to a basal level in S phase (at protein level).
Cellular localization	Nucleus.

Images



All lanes : Anti-ORC1 antibody (ab85830) at 0.4 µg/ml

Lane 1 : HeLa whole cell lysate at 50 µg

Lane 2 : HeLa whole cell lysate at 15 µg

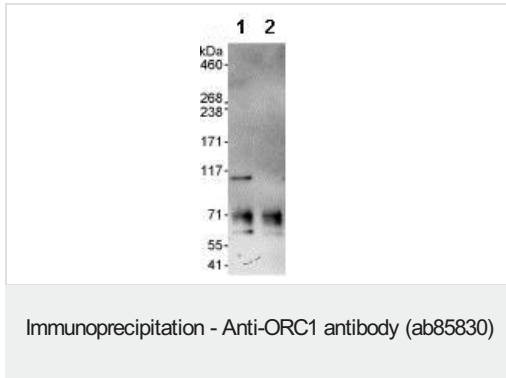
Lane 3 : HeLa whole cell lysate at 5 µg

Lane 4 : 293T whole cell lysate at 50 µg

Predicted band size: 97 kDa

Observed band size: 107 kDa

Exposure time: 3 minutes



Detection of Human ORC1 by Western Blot of Immunoprecipitate.

All lanes: ab85830 at 1µg/ml staining ORC1 in HeLa whole cell lysates immunoprecipitated at 3µg/mg lysate (1 mg/IP; 20% of IP loaded/lane) using the following antibodies:

Lane 1: ab85830

Lane 2: Control IgG

Detection: Chemiluminescence with exposure time of 30 seconds.

Please note: All products are "FOR RESEARCH USE ONLY. NOT FOR USE IN DIAGNOSTIC PROCEDURES"

Our Abpromise to you: Quality guaranteed and expert technical support

- Replacement or refund for products not performing as stated on the datasheet
- Valid for 12 months from date of delivery
- Response to your inquiry within 24 hours
- We provide support in Chinese, English, French, German, Japanese and Spanish
- Extensive multi-media technical resources to help you
- We investigate all quality concerns to ensure our products perform to the highest standards

If the product does not perform as described on this datasheet, we will offer a refund or replacement. For full details of the Abpromise, please visit <https://www.abcam.com/abpromise> or contact our technical team.

Terms and conditions

- Guarantee only valid for products bought direct from Abcam or one of our authorized distributors