



Product datasheet

Anti-ORF7α Protein antibody [3C9] ab273435

[4 Images](#)

Overview

Product name	Anti-ORF7a Protein antibody [3C9]
Description	Mouse monoclonal [3C9] to ORF7a Protein - Coronavirus
Host species	Mouse
Tested applications	Suitable for: WB, ICC/IF
Species reactivity	Reacts with: SARS-CoV-2
Immunogen	Recombinant fragment corresponding to Human coronavirus ORF7a Protein aa 1-150. Database link: P59635
	 Run BLAST with  Run BLAST with
Positive control	WB: Caco2 and Vero E6 whole cell lysate infected with SARS-CoV-2 Protein 7a. ICC/IF: Vero E6 whole cells expressing SARS-CoV-2 Protein 7a.
General notes	<p>The Life Science industry has been in the grips of a reproducibility crisis for a number of years. Abcam is leading the way in addressing this with our range of recombinant monoclonal antibodies and knockout edited cell lines for gold-standard validation. Please check that this product meets your needs before purchasing.</p> <p>If you have any questions, special requirements or concerns, please send us an inquiry and/or contact our Support team ahead of purchase. Recommended alternatives for this product can be found below, along with publications, customer reviews and Q&As</p>

Properties

Form	Liquid
Storage instructions	Shipped at 4°C. Store at +4°C short term (1-2 weeks). Upon delivery aliquot. Store at -20°C. Avoid freeze / thaw cycle.
Storage buffer	pH: 7.40 Constituent: 100% PBS
Purity	Protein G purified
Clonality	Monoclonal
Clone number	3C9
Isotype	IgG1

Applications

The Abpromise guarantee

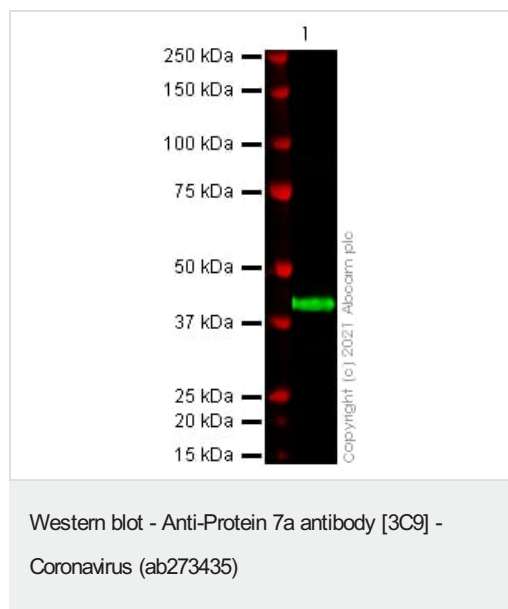
Our **Abpromise guarantee** covers the use of ab273435 in the following tested applications.

The application notes include recommended starting dilutions; optimal dilutions/concentrations should be determined by the end user.

Application	Abreviews	Notes
WB		1/500 - 1/3000.
ICC/IF		Use at an assay dependent concentration.

Target

Images

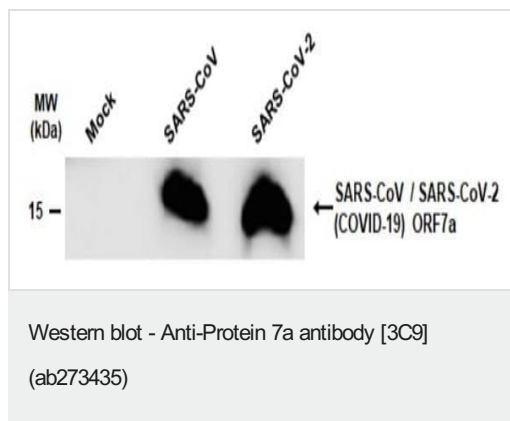


Anti-ORF7a Protein antibody [3C9] (ab273435) at 1/1000 dilution + Recombinant SARS-CoV2 ORF7a Fc chimera protein cell lysate at 0.5 µg

Performed under reducing conditions.

Observed band size: 40 kDa

False colour image of Western blot: Anti-ORF7a Protein antibody [3C9] - Coronavirus staining at 1/1000 dilution, shown in green; Rabbit anti-alpha Tubulin antibody [EP1332Y] ([ab52866](#)) loading control staining at 1/20000 dilution, shown in red. In Western blot, ab273435 was shown to bind specifically to ORF7a Protein. First, samples were run on an SDS-PAGE gel then transferred onto a nitrocellulose membrane. Membranes were blocked in fluorescent western blot (TBS-based) blocking solution before incubation with primary antibodies overnight at 4 °C. Blots were washed four times in TBS-T, incubated with secondary antibodies for 1 h at room temperature, washed again four times then imaged. Secondary antibodies used were Goat anti-Mouse IgG H&L (IRDye[®] 800CW) preabsorbed ([ab216772](#)) and Goat anti-Rabbit IgG H&L (IRDye[®] 680RD) preabsorbed ([ab216777](#)) at 1/20000 dilution.

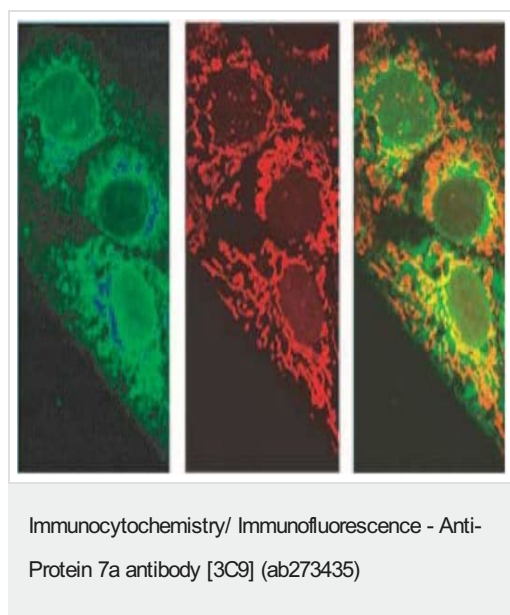


All lanes : Anti-ORF7a Protein antibody [3C9] (ab273435) at 1/1000 dilution

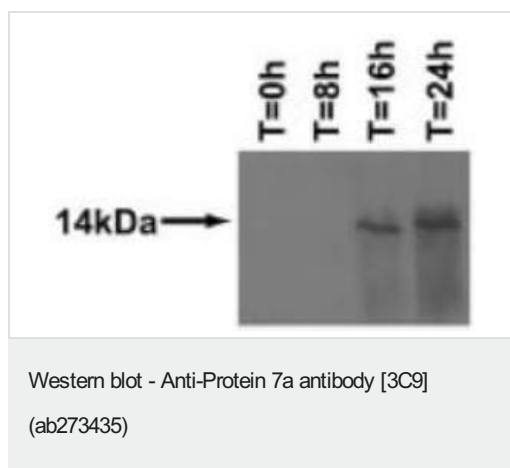
Lane 1 : Mock, Caco2 (human colorectal adenocarcinoma cell line) whole cell lysate

Lane 2 : SARS-CoV infected, Caco2 whole cell lysate

Lane 3 : SARS-CoV-2, Caco2 whole cell lysate



Immunofluorescence analysis of Vero E6 (african green monkey kidney epithelial cell line) cells labelling Protein 7a (green) using ab273435. Red: MitoTracker. Left Panel is merged images.



All lanes : Anti-ORF7a Protein antibody [3C9] (ab273435) at 1/500 dilution

Lane 1 : SARS-CoV-infected Vero E6 (african green monkey kidney epithelial cell line) whole cell lysate

Lane 2 : 8 hours after SARS-CoV-infected Vero E6 whole cell lysate

Lane 3 : 16 hours after SARS-CoV-infected Vero E6 whole cell lysate

Lane 4 : 24 hours after SARS-CoV-infected Vero E6 whole cell lysate

Please note: All products are "FOR RESEARCH USE ONLY. NOT FOR USE IN DIAGNOSTIC PROCEDURES"

Our Abpromise to you: Quality guaranteed and expert technical support

- Replacement or refund for products not performing as stated on the datasheet
- Valid for 12 months from date of delivery
- Response to your inquiry within 24 hours
- We provide support in Chinese, English, French, German, Japanese and Spanish
- Extensive multi-media technical resources to help you
- We investigate all quality concerns to ensure our products perform to the highest standards

If the product does not perform as described on this datasheet, we will offer a refund or replacement. For full details of the Abpromise, please visit <https://www.abcam.com/abpromise> or contact our technical team.

Terms and conditions

- Guarantee only valid for products bought direct from Abcam or one of our authorized distributors