

Product datasheet

Anti-OTUD4/HIN-1 antibody ab106368

★★★★★ [1 Abreviews](#) [1 References](#) [3 Images](#)

Overview

Product name	Anti-OTUD4/HIN-1 antibody
Description	Rabbit polyclonal to OTUD4/HIN-1
Host species	Rabbit
Tested applications	Suitable for: ICC/IF, WB, ICC
Species reactivity	Reacts with: Human
Immunogen	Synthetic peptide corresponding to Human OTUD4/HIN-1 (C terminal). NP_001096123 Database link: Q01804-3
Positive control	Daudi cell lysate, Daudi cells.
General notes	<p>The Life Science industry has been in the grips of a reproducibility crisis for a number of years. Abcam is leading the way in addressing this with our range of recombinant monoclonal antibodies and knockout edited cell lines for gold-standard validation. Please check that this product meets your needs before purchasing.</p> <p>If you have any questions, special requirements or concerns, please send us an inquiry and/or contact our Support team ahead of purchase. Recommended alternatives for this product can be found below, along with publications, customer reviews and Q&As</p>

Properties

Form	Liquid
Storage instructions	Shipped at 4°C. Store at 4°C (stable for up to 12 months).
Storage buffer	pH: 7.2 Preservative: 0.02% Sodium azide Constituent: PBS
Purity	Immunogen affinity purified
Clonality	Polyclonal
Isotype	IgG

Applications

The Abpromise guarantee Our **Abpromise guarantee** covers the use of ab106368 in the following tested applications.

The application notes include recommended starting dilutions; optimal dilutions/concentrations should be determined by the end user.

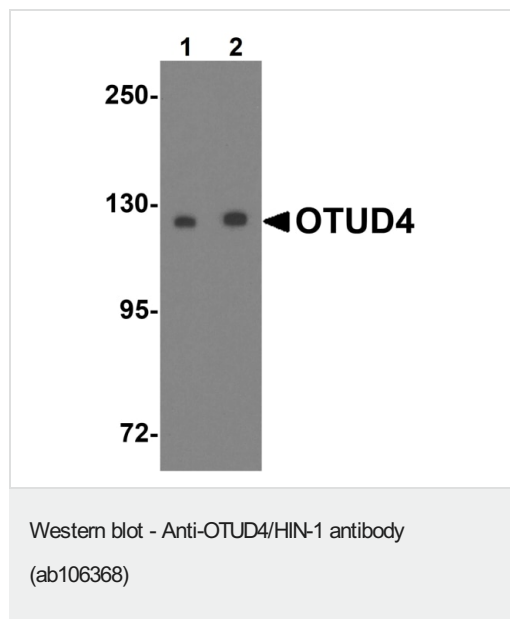
Application	Abreviews	Notes
ICC/IF		Use a concentration of 20 µg/ml.
WB	★★★★★ (1)	Use a concentration of 0.25 - 0.5 µg/ml. Predicted molecular weight: 124 kDa.
ICC		Use a concentration of 2.5 µg/ml.

Target

Sequence similarities Contains 1 OTU domain.

Form There are 4 isoforms produced by alternative splicing. The smaller protein isoform is found only in HIV-1 infected cells.

Images

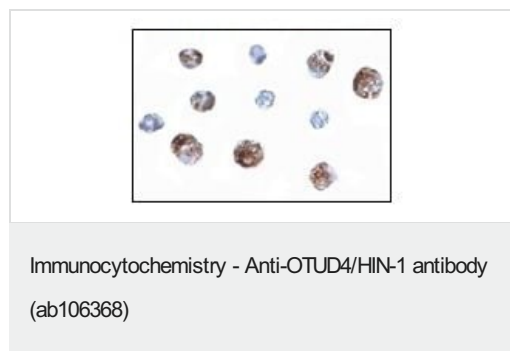


Lane 1 : Anti-OTUD4/HIN-1 antibody (ab106368) at 0.25 µg/ml

Lane 2 : Anti-OTUD4/HIN-1 antibody (ab106368) at 0.5 µg/ml

All lanes : Daudi (human Burkitt's lymphoma cell line) cell lysate

Predicted band size: 124 kDa



ab106368, at 2.5 µg/ml, staining OTUD4/HIN-1 in Daudi cells by immunocytochemistry.

Immunocytochemistry/ Immunofluorescence - Anti-OTUD4/HIN-1 antibody (ab106368)

Immunofluorescence of OTUD4/HIN-1 in Daudi cells using ab106368 at 20 ug/ml.

Please note: All products are "FOR RESEARCH USE ONLY. NOT FOR USE IN DIAGNOSTIC PROCEDURES"

Our Abpromise to you: Quality guaranteed and expert technical support

- Replacement or refund for products not performing as stated on the datasheet
- Valid for 12 months from date of delivery
- Response to your inquiry within 24 hours
- We provide support in Chinese, English, French, German, Japanese and Spanish
- Extensive multi-media technical resources to help you
- We investigate all quality concerns to ensure our products perform to the highest standards

If the product does not perform as described on this datasheet, we will offer a refund or replacement. For full details of the Abpromise, please visit <https://www.abcam.com/abpromise> or contact our technical team.

Terms and conditions

- Guarantee only valid for products bought direct from Abcam or one of our authorized distributors