

Product datasheet

Anti-OTULIN antibody [EPR19841] ab211328

KO VALIDATED

Recombinant

RabMAb

[1 References](#) [4 Images](#)

Overview

Product name	Anti-OTULIN antibody [EPR19841]
Description	Rabbit monoclonal [EPR19841] to OTULIN
Host species	Rabbit
Tested applications	Suitable for: WB, IP
Species reactivity	Reacts with: Human
Immunogen	Recombinant fragment. This information is proprietary to Abcam and/or its suppliers.
Positive control	WB: HEK-293T, MCF7 and PC-3 cell lysates; Human brain, fetal heart and fetal spleen lysates. IP: HEK-293T whole cell lysate.
General notes	<p>This product is a recombinant monoclonal antibody, which offers several advantages including:</p> <ul style="list-style-type: none"> - High batch-to-batch consistency and reproducibility - Improved sensitivity and specificity - Long-term security of supply - Animal-free production <p>For more information see here.</p> <p>Our RabMAb[®] technology is a patented hybridoma-based technology for making rabbit monoclonal antibodies. For details on our patents, please refer to RabMAb[®] patents.</p>

Properties

Form	Liquid
Storage instructions	Shipped at 4°C. Store at +4°C short term (1-2 weeks). Upon delivery aliquot. Store at -20°C long term. Avoid freeze / thaw cycle.
Storage buffer	<p>pH: 7.2</p> <p>Preservative: 0.01% Sodium azide</p> <p>Constituents: 0.05% BSA, 40% Glycerol (glycerin, glycerine), PBS</p>
Purity	Protein A purified
Clonality	Monoclonal
Clone number	EPR19841
Isotype	IgG

Applications

The Abpromise guarantee

Our **Abpromise guarantee** covers the use of ab211328 in the following tested applications.

The application notes include recommended starting dilutions; optimal dilutions/concentrations should be determined by the end user.

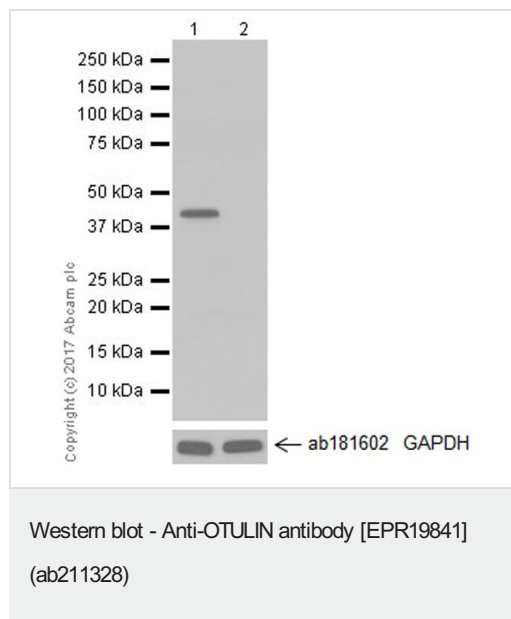
Application	Abreviews	Notes
WB		1/1000. Detects a band of approximately 40 kDa (predicted molecular weight: 40 kDa).
IP		1/30.

Target

Sequence similarities

Belongs to the FAM105 family.

Images



All lanes : Anti-OTULIN antibody [EPR19841] (ab211328) at 1/1000 dilution

Lane 1 : HEK-293T (human epithelial cell line from embryonic kidney transformed with large T antigen) whole cell lysate

Lane 2 : OTULIN knockout HEK-293T whole cell lysate

Lysates/proteins at 10 µg per lane.

Secondary

All lanes : Goat Anti-Rabbit IgG H&L (HRP) (**ab97051**) at 1/100000 dilution

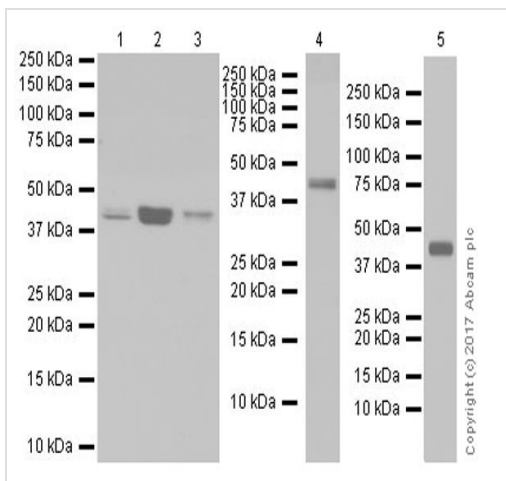
Developed using the ECL technique.

Predicted band size: 40 kDa

Observed band size: 40 kDa

Exposure time: 2 seconds

Blocking/Dilution buffer: 5% NFDM/TBST.



Western blot - Anti-OTULIN antibody [EPR19841]
(ab211328)

All lanes : Anti-OTULIN antibody [EPR19841] (ab211328) at 1/1000 dilution

Lane 1 : Human brain lysate

Lane 2 : Human fetal heart lysate

Lane 3 : Human fetal spleen lysate

Lane 4 : MCF7 (human breast adenocarcinoma cell line) whole cell lysate

Lane 5 : PC-3 (human prostate adenocarcinoma cell line) whole cell lysate

Lysates/proteins at 10 µg per lane.

Secondary

Lanes 1-3 : VeriBlot for IP Detection Reagent (HRP) ([ab131366](#)) at 1/1000 dilution

Lanes 4-5 : Goat Anti-Rabbit IgG H&L (HRP) ([ab97051](#)) at 1/100000 dilution

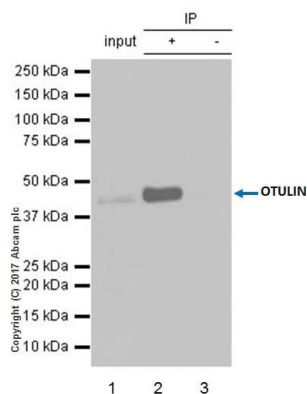
Developed using the ECL technique.

Predicted band size: 40 kDa

Observed band size: 40 kDa

Exposure time : Lane 1-3: 3 minutes; Lane 4-5: 3 seconds.

Blocking/Dilution buffer: 5% NFDM/TBST.



Immunoprecipitation - Anti-OTULIN antibody
[EPR19841] (ab211328)

OTULIN was immunoprecipitated from 0.35 mg of HEK-293T (human epithelial cell line from embryonic kidney transformed with large T antigen) lysate with ab211328 at 1/30 dilution. Western blot was performed from the immunoprecipitate using ab211328 at 1/1000 dilution. VeriBlot for IP Detection Reagent (HRP) (**ab131366**), was used for detection at 1/10,000 dilution

Lane 1: HEK-293T whole cell lysate 10 µg (Input).

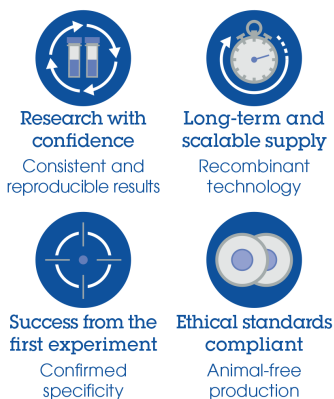
Lane 2: ab211328 IP in HEK-293T whole cell lysate.

Lane 3: Rabbit monoclonal IgG (**ab172730**) instead of ab211328 in HEK-293T whole cell lysate.

Blocking and dilution buffer and concentration: 5% NFDM/TBST.

Exposure time: 3 minutes.

Why choose a recombinant antibody?



Anti-OTULIN antibody [EPR19841] (ab211328)

Please note: All products are "FOR RESEARCH USE ONLY. NOT FOR USE IN DIAGNOSTIC PROCEDURES"

Our Abpromise to you: Quality guaranteed and expert technical support

- Replacement or refund for products not performing as stated on the datasheet
- Valid for 12 months from date of delivery
- Response to your inquiry within 24 hours
- We provide support in Chinese, English, French, German, Japanese and Spanish
- Extensive multi-media technical resources to help you
- We investigate all quality concerns to ensure our products perform to the highest standards

If the product does not perform as described on this datasheet, we will offer a refund or replacement. For full details of the Abpromise, please visit <https://www.abcam.com/abpromise> or contact our technical team.

Terms and conditions

- Guarantee only valid for products bought direct from Abcam or one of our authorized distributors