


Anti-OXGR1/GPR99 antibody ab67351

[1 References](#) [1 Image](#)

Overview

Product name	Anti-OXGR1/GPR99 antibody
Description	Rabbit polyclonal to OXGR1/GPR99
Host species	Rabbit
Tested applications	Suitable for: IHC-P
Species reactivity	Reacts with: Human Predicted to work with: Mouse, Rat 
Immunogen	Synthetic peptide corresponding to Human OXGR1/GPR99 (extracellular) conjugated to keyhole limpet haemocyanin. Synthetic peptide from within 150-200 of OXGR1/GPR99. 2nd extracellular domain.
Positive control	Human kidney tissue.
General notes	<p>The Life Science industry has been in the grips of a reproducibility crisis for a number of years. Abcam is leading the way in addressing this with our range of recombinant monoclonal antibodies and knockout edited cell lines for gold-standard validation. Please check that this product meets your needs before purchasing.</p> <p>If you have any questions, special requirements or concerns, please send us an inquiry and/or contact our Support team ahead of purchase. Recommended alternatives for this product can be found below, along with publications, customer reviews and Q&As</p>

Properties

Form	Liquid
Storage instructions	Shipped at 4°C. Upon delivery aliquot and store at -20°C or -80°C. Avoid repeated freeze / thaw cycles.
Storage buffer	pH: 7.4 Preservative: 0.1% Sodium azide Constituent: PBS
Purity	Immunogen affinity purified
Clonality	Polyclonal
Isotype	IgG

Applications

The Abpromise guarantee

Our **Abpromise guarantee** covers the use of ab67351 in the following tested applications.

The application notes include recommended starting dilutions; optimal dilutions/concentrations should be determined by the end user.

Application	Abreviews	Notes
IHC-P		Use a concentration of 20 µg/ml.

Target

Function

Receptor for alpha-ketoglutarate. Seems to act exclusively through a G(q)-mediated pathway.

Tissue specificity

Detected in kidney and, to a lower extend, in placenta. Not detected in brain tissues including the frontal cortex, caudate putamen, thalamus, hypothalamus, hippocampus or pons.

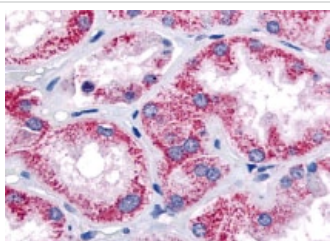
Sequence similarities

Belongs to the G-protein coupled receptor 1 family.

Cellular localization

Cell membrane.

Images



ab67351 at 20µg/ml staining OXGR1/GPR99 in human kidney by Immunohistochemistry, Formalin-fixed, Paraffin-embedded tissue.

Immunohistochemistry (Formalin/PFA-fixed paraffin-embedded sections) - Anti-OXGR1/GPR99 antibody (ab67351)

Please note: All products are "FOR RESEARCH USE ONLY. NOT FOR USE IN DIAGNOSTIC PROCEDURES"

Our Abpromise to you: Quality guaranteed and expert technical support

- Replacement or refund for products not performing as stated on the datasheet
- Valid for 12 months from date of delivery
- Response to your inquiry within 24 hours
- We provide support in Chinese, English, French, German, Japanese and Spanish
- Extensive multi-media technical resources to help you
- We investigate all quality concerns to ensure our products perform to the highest standards

If the product does not perform as described on this datasheet, we will offer a refund or replacement. For full details of the Abpromise, please visit <https://www.abcam.com/abpromise> or contact our technical team.

Terms and conditions

- Guarantee only valid for products bought direct from Abcam or one of our authorized distributors