


Anti-Oxytocin antibody ab67457

[3 References](#) [2 Images](#)

Overview

Product name	Anti-Oxytocin antibody
Description	Rabbit polyclonal to Oxytocin
Host species	Rabbit
Tested applications	Suitable for: WB, ICC/IF
Species reactivity	Reacts with: Human Predicted to work with: Rat, Horse, Pig 
Immunogen	Synthetic peptide. This information is proprietary to Abcam and/or its suppliers.
Positive control	This antibody gave a positive signal in Human adult pituitary gland tissue lysate. This antibody gave a positive result in IF in the following Formaldehyde fixed cell line: HeLa.
General notes	<p>The Life Science industry has been in the grips of a reproducibility crisis for a number of years. Abcam is leading the way in addressing this with our range of recombinant monoclonal antibodies and knockout edited cell lines for gold-standard validation. Please check that this product meets your needs before purchasing.</p> <p>If you have any questions, special requirements or concerns, please send us an inquiry and/or contact our Support team ahead of purchase. Recommended alternatives for this product can be found below, along with publications, customer reviews and Q&As</p>

Properties

Form	Liquid
Storage instructions	Shipped at 4°C. Store at +4°C short term (1-2 weeks). Upon delivery aliquot. Store at -20°C or -80°C. Avoid freeze / thaw cycle.
Storage buffer	<p>pH: 7.40</p> <p>Preservative: 0.02% Sodium azide</p> <p>Constituent: PBS</p> <p>Batches of this product that have a concentration < 1mg/ml may have BSA added as a stabilising agent. If you would like information about the formulation of a specific lot, please contact our scientific support team who will be happy to help.</p>
Purity	Immunogen affinity purified
Clonality	Polyclonal

Applications

The Abpromise guarantee

Our **Abpromise guarantee** covers the use of ab67457 in the following tested applications.

The application notes include recommended starting dilutions; optimal dilutions/concentrations should be determined by the end user.

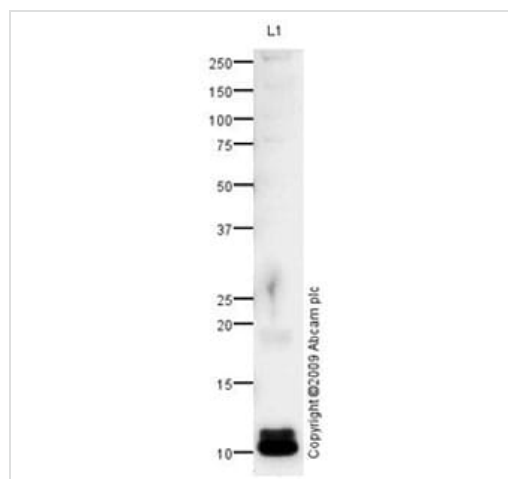
Application	Abreviews	Notes
WB		Use a concentration of 1 µg/ml. Detects a band of approximately 12, 10 kDa (predicted molecular weight: 12 kDa).
ICC/IF		Use a concentration of 5 µg/ml.

Target

Cellular localization

Secreted

Images



Western blot - Anti-Oxytocin antibody (ab67457)

Anti-Oxytocin antibody (ab67457) at 1 µg/ml + Brain: pituitary gland (Human) Whole Cell Lysate - adult normal tissue (**ab29749**) at 10 µg

Secondary

Goat polyclonal to Rabbit IgG - H&L - Pre-Adsorbed (HRP) (**ab65484**) at 1/3000 dilution (Goat polyclonal to Rabbit IgG - H&L - Pre-Adsorbed (HRP))

Developed using the ECL technique.

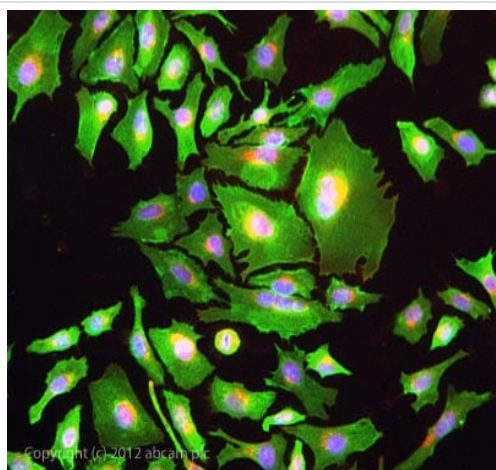
Performed under reducing conditions.

Predicted band size: 12 kDa

Observed band size: 12 kDa

Additional bands at: 10 kDa (possible cleavage fragment)

We hypothesize that the 12 and 10 kDa bands represent the pro and mature form of Oxytocin, respectively.



Immunocytochemistry/ Immunofluorescence - Anti-Oxytocin antibody (ab67457)

ICC/IF image of ab67457 stained HeLa cells. The cells were 4% formaldehyde fixed (10 min) and then incubated in 1%BSA / 10% normal goat serum / 0.3M glycine in 0.1% PBS-Tween for 1h to permeabilise the cells and block non-specific protein-protein interactions. The cells were then incubated with the antibody ab67457 at 5µg/ml overnight at +4°C. The secondary antibody (green) was DyLight® 488 goat anti- rabbit (**ab96899**) IgG (H+L) used at a 1/1000 dilution for 1h. Alexa Fluor® 594 WGA was used to label plasma membranes (red) at a 1/200 dilution for 1h. DAPI was used to stain the cell nuclei (blue) at a concentration of 1.43µM.

Please note: All products are "FOR RESEARCH USE ONLY. NOT FOR USE IN DIAGNOSTIC PROCEDURES"

Our Abpromise to you: Quality guaranteed and expert technical support

- Replacement or refund for products not performing as stated on the datasheet
- Valid for 12 months from date of delivery
- Response to your inquiry within 24 hours
- We provide support in Chinese, English, French, German, Japanese and Spanish
- Extensive multi-media technical resources to help you
- We investigate all quality concerns to ensure our products perform to the highest standards

If the product does not perform as described on this datasheet, we will offer a refund or replacement. For full details of the Abpromise, please visit <https://www.abcam.com/abpromise> or contact our technical team.

Terms and conditions

- Guarantee only valid for products bought direct from Abcam or one of our authorized distributors