

Product datasheet

Anti-P cadherin antibody [MM0508-9V11] ab89900

★★★★☆ [2 Abreviews](#) [2 Images](#)

Overview

Product name	Anti-P cadherin antibody [MM0508-9V11]
Description	Mouse monoclonal [MM0508-9V11] to P cadherin
Host species	Mouse
Tested applications	Suitable for: WB, Flow Cyt
Species reactivity	Reacts with: Human
Immunogen	Human recombinant P cadherin extracellular domain.
Positive control	WB: Human placenta tissue lysate
General notes	<p>The Life Science industry has been in the grips of a reproducibility crisis for a number of years. Abcam is leading the way in addressing this with our range of recombinant monoclonal antibodies and knockout edited cell lines for gold-standard validation. Please check that this product meets your needs before purchasing.</p> <p>If you have any questions, special requirements or concerns, please send us an inquiry and/or contact our Support team ahead of purchase. Recommended alternatives for this product can be found below, along with publications, customer reviews and Q&As</p>

Properties

Form	Lyophilized:Reconstitute the antibody with 200µl sterile PBS and the final concentration is 0.5mg/ml.
Storage instructions	Shipped at 4°C. Upon delivery aliquot and store at -20°C or -80°C. Avoid repeated freeze / thaw cycles.
Storage buffer	Constituent: PBS
Purity	Protein G purified
Purification notes	filter sterilised
Clonality	Monoclonal
Clone number	MM0508-9V11
Isotype	IgG1

Applications

The Abpromise guarantee

Our **Abpromise guarantee** covers the use of ab89900 in the following tested applications.

The application notes include recommended starting dilutions; optimal dilutions/concentrations should be determined by the end user.

Application	Abreviews	Notes
WB		1/500 - 1/1000. Predicted molecular weight: 91 kDa.
Flow Cyt	★★★★★ (1)	1/50 - 1/200. ab170190 - Mouse monoclonal IgG1, is suitable for use as an isotype control with this antibody.

Target

Function

Cadherins are calcium dependent cell adhesion proteins. They preferentially interact with themselves in a homophilic manner in connecting cells; cadherins may thus contribute to the sorting of heterogeneous cell types.

Tissue specificity

Expressed in some normal epithelial tissues and in some carcinoma cell lines.

Involvement in disease

Defects in CDH3 are the cause of hypotrichosis with juvenile macular dystrophy (HJMD) [MIM:601553]. HJMD is a rare autosomal recessive disorder characterized by early hair loss heralding severe degenerative changes of the retinal macula and culminating in blindness during the second to third decade of life.

Defects in CDH3 are the cause of ectodermal dysplasia with ectrodactyly and macular dystrophy (EEM) [MIM:225280]; also known as EEM syndrome, Albrechtsen-Svendsen syndrome or Ohdo-Hirayama-Terawaki syndrome. Ectodermal dysplasia defines a heterogeneous group of disorders due to abnormal development of two or more ectodermal structures. EEM is an autosomal recessive condition characterized by features of ectodermal dysplasia such as sparse eyebrows and scalp hair, and selective tooth agenesis associated with macular dystrophy and ectrodactyly.

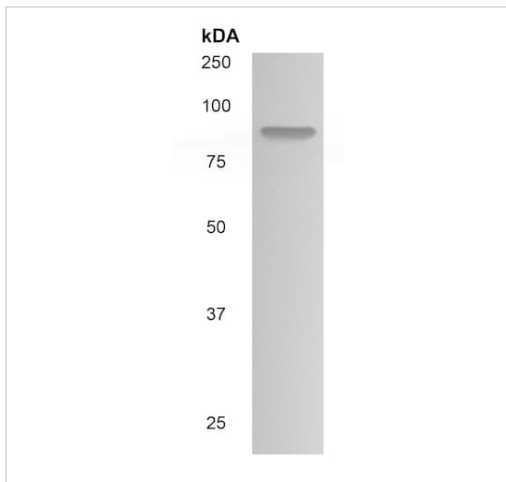
Sequence similarities

Contains 5 cadherin domains.

Cellular localization

Cell membrane.

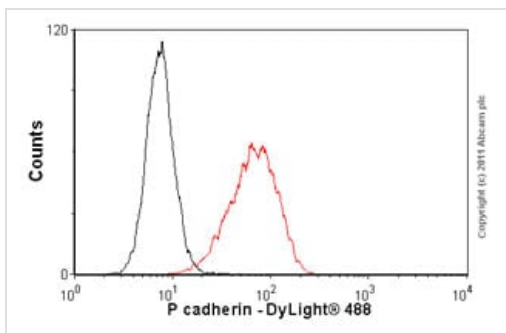
Images



Western blot - Anti-P cadherin antibody [MM0508-9V11] (ab89900)

Anti-P cadherin antibody [MM0508-9V11] (ab89900) at 1/500 dilution + Human placenta tissue lysate

Predicted band size: 91 kDa



Flow Cytometry - Anti-P cadherin antibody [MM0508-9V11] (ab89900)

Overlay histogram showing A431 cells stained with ab89900 (red line). The cells were fixed with 80% methanol (5 min) and incubated in 1x PBS / 10% normal goat serum / 0.3M glycine to block non-specific protein-protein interactions. The cells were then incubated with the antibody (ab89900, 1 µg/1x10⁶ cells) for 30 min at 22°C. The secondary antibody used was DyLight® 488 goat anti-mouse IgG (H+L) ([ab96879](#)) at 1/500 dilution for 30 min at 22°C. Isotype control antibody (black line) was mouse IgG1 [ICIGG1] ([ab91353](#), 2 µg/1x10⁶ cells) used under the same conditions. Acquisition of >5,000 events was performed.

Please note that Abcam do not have any data for use of this antibody on non-fixed cells. We welcome any customer feedback.

Please note: All products are "FOR RESEARCH USE ONLY. NOT FOR USE IN DIAGNOSTIC PROCEDURES"

Our Abpromise to you: Quality guaranteed and expert technical support

- Replacement or refund for products not performing as stated on the datasheet
- Valid for 12 months from date of delivery
- Response to your inquiry within 24 hours
- We provide support in Chinese, English, French, German, Japanese and Spanish
- Extensive multi-media technical resources to help you
- We investigate all quality concerns to ensure our products perform to the highest standards

If the product does not perform as described on this datasheet, we will offer a refund or replacement. For full details of the Abpromise, please visit <https://www.abcam.com/abpromise> or contact our technical team.

Terms and conditions

- Guarantee only valid for products bought direct from Abcam or one of our authorized distributors