

### Anti-P Glycoprotein antibody - N-terminal ab202976

★★★★★ [1 Abreviews](#) [2 Images](#)

#### Overview

<b>Product name</b>	Anti-P Glycoprotein antibody - N-terminal
<b>Description</b>	Rabbit polyclonal to P Glycoprotein - N-terminal
<b>Host species</b>	Rabbit
<b>Specificity</b>	The immunogen for ab202976 is derived from Mouse ABCB1A and is 75% cross-reactive with Mouse ABCB1B.
<b>Tested applications</b>	<b>Suitable for:</b> ICC, WB
<b>Species reactivity</b>	<b>Reacts with:</b> Mouse, Human
<b>Immunogen</b>	Synthetic peptide within Mouse P Glycoprotein aa 1-100 (N terminal) conjugated to keyhole limpet haemocyanin. The exact immunogen sequence used to generate this antibody is proprietary information. If additional detail on the immunogen is needed to determine the suitability of the antibody for your needs, please <b>contact</b> our Scientific Support team to discuss your requirements. The immunogen for ab202976 is derived from Mouse ABCB1A. Database link: <a href="#">P21447</a>
<b>Positive control</b>	WB: Mouse Liver lysates. SH-SY5Y, HEK-293T, and HepG2 cell lysates; ICC: SH-SY5Y cells.
<b>General notes</b>	<p>The Life Science industry has been in the grips of a reproducibility crisis for a number of years. Abcam is leading the way in addressing this with our range of recombinant monoclonal antibodies and knockout edited cell lines for gold-standard validation. Please check that this product meets your needs before purchasing.</p> <p>If you have any questions, special requirements or concerns, please send us an inquiry and/or contact our Support team ahead of purchase. Recommended alternatives for this product can be found below, along with publications, customer reviews and Q&amp;As</p>

#### Properties

<b>Form</b>	Liquid
<b>Storage instructions</b>	Shipped at 4°C. Store at +4°C short term (1-2 weeks). Upon delivery aliquot. Store at -20°C long term. Avoid freeze / thaw cycle.
<b>Storage buffer</b>	pH: 7.40 Preservative: 0.02% Proclin 300 Constituents: 50% Glycerol (glycerin, glycerine), 1% BSA, 48.98% TBS, 1X  Aqueous buffered solution.

<b>Purity</b>	Protein A purified
<b>Clonality</b>	Polyclonal
<b>Isotype</b>	IgG

## Applications

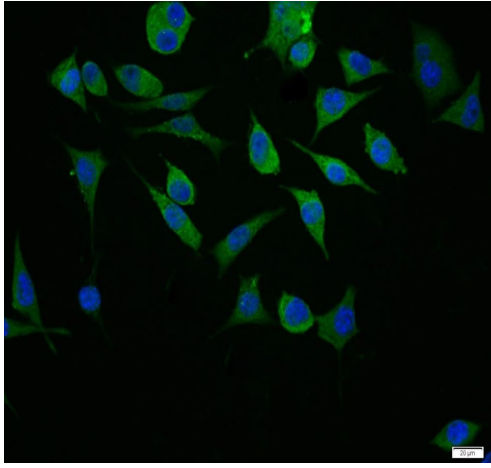
**The Abpromise guarantee** Our **Abpromise guarantee** covers the use of ab202976 in the following tested applications. The application notes include recommended starting dilutions; optimal dilutions/concentrations should be determined by the end user.

Application	Abreviews	Notes
ICC		1/50 - 1/200.
WB	★★★★★ (1)	1/300 - 1/1000.

## Target

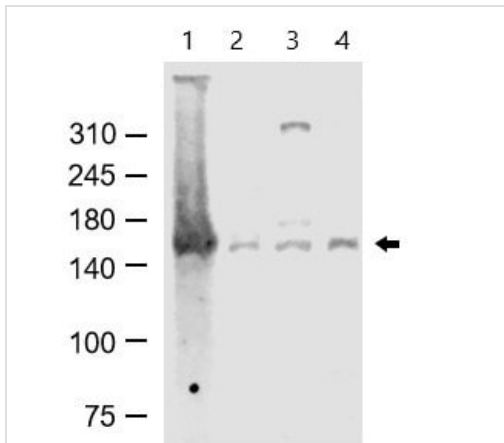
<b>Function</b>	Energy-dependent efflux pump responsible for decreased drug accumulation in multidrug-resistant cells.
<b>Tissue specificity</b>	Expressed in liver, kidney, small intestine and brain.
<b>Involvement in disease</b>	Genetic variations in ABCB1 are associated with susceptibility to inflammatory bowel disease type 13 (IBD13) [MIM:612244]. Inflammatory bowel disease is characterized by a chronic relapsing intestinal inflammation. It is subdivided into Crohn disease and ulcerative colitis phenotypes. Crohn disease may involve any part of the gastrointestinal tract, but most frequently the terminal ileum and colon. Bowel inflammation is transmural and discontinuous; it may contain granulomas or be associated with intestinal or perianal fistulas. In contrast, in ulcerative colitis, the inflammation is continuous and limited to rectal and colonic mucosal layers; fistulas and granulomas are not observed. Both diseases include extraintestinal inflammation of the skin, eyes, or joints. Crohn disease and ulcerative colitis are commonly classified as autoimmune diseases.
<b>Sequence similarities</b>	Belongs to the ABC transporter superfamily. ABCB family. Multidrug resistance exporter (TC 3.A.1.201) subfamily. Contains 2 ABC transmembrane type-1 domains. Contains 2 ABC transporter domains.
<b>Cellular localization</b>	Membrane.

## Images



Immunocytochemistry - Anti-P Glycoprotein antibody - N-terminal (ab202976)

Immunocytochemistry analysis of SH-SY5Y (human neuroblastoma cell line from bone marrow) cells labelling P Glycoprotein with ab202976 at 1/100 dilution. Cells were fixed with 4% paraformaldehyde and permeabilized with Triton X-100 at room temperature for 20 minutes. Normal goat serum was used as the blocking buffer at 37°C for 20 minutes. Primary incubation was for 90 minutes at 37°C followed by a FITC conjugated Goat Anti-Rabbit IgG secondary antibody at 37°C for 90 minutes (green). Nuclear DNA was labelled with DAPI (blue).



Western blot - Anti-P Glycoprotein antibody - N-terminal (ab202976)

**All lanes :** Anti-P Glycoprotein antibody - N-terminal (ab202976) at 1/1000 dilution

**Lane 1 :** Mouse liver lysate

**Lane 2 :** SH-SY5Y (human neuroblastoma cell line from bone marrow) cell lysate

**Lane 3 :** HepG2 (human liver hepatocellular carcinoma cell line) cell lysate

**Lane 4 :** HEK-293T (human epithelial cell line from embryonic kidney transformed with large T antigen) cell lysate

### Secondary

**All lanes :** Conjugated secondary antibody at 1/20000 dilution

Primary antibody incubation at 4°C overnight followed by secondary antibody incubation for 60 minutes at 37°C.

**Please note:** All products are "FOR RESEARCH USE ONLY. NOT FOR USE IN DIAGNOSTIC PROCEDURES"

**Our Abpromise to you: Quality guaranteed and expert technical support**

- Replacement or refund for products not performing as stated on the datasheet
- Valid for 12 months from date of delivery
- Response to your inquiry within 24 hours
- We provide support in Chinese, English, French, German, Japanese and Spanish
- Extensive multi-media technical resources to help you
- We investigate all quality concerns to ensure our products perform to the highest standards

If the product does not perform as described on this datasheet, we will offer a refund or replacement. For full details of the Abpromise, please visit <https://www.abcam.com/abpromise> or contact our technical team.

#### **Terms and conditions**

---

- Guarantee only valid for products bought direct from Abcam or one of our authorized distributors