

## Product datasheet

### Anti-p150 CAF1/CAF antibody [EPR5576(2)] $\alpha$ b126625

Recombinant RabMAb

★★★★★ [1 Abreviews](#) [13 References](#) [6 Images](#)

#### Overview

<b>Product name</b>	Anti-p150 CAF1/CAF antibody [EPR5576(2)]
<b>Description</b>	Rabbit monoclonal [EPR5576(2)] to p150 CAF1/CAF
<b>Host species</b>	Rabbit
<b>Tested applications</b>	<b>Suitable for:</b> Flow Cyt (Intra), ICC/IF, WB, IHC-P
<b>Species reactivity</b>	<b>Reacts with:</b> Human
<b>Immunogen</b>	Synthetic peptide within Human p150 CAF1/CAF aa 100-200. The exact sequence is proprietary.
<b>General notes</b>	<p>This product is a recombinant monoclonal antibody, which offers several advantages including:</p> <ul style="list-style-type: none"> <li>- High batch-to-batch consistency and reproducibility</li> <li>- Improved sensitivity and specificity</li> <li>- Long-term security of supply</li> <li>- Animal-free production</li> </ul> <p>For more information <a href="#">see here</a>.</p> <p>Our RabMAb<sup>®</sup> technology is a patented hybridoma-based technology for making rabbit monoclonal antibodies. For details on our patents, please refer to <a href="#">RabMAb<sup>®</sup> patents</a>.</p> <p>Mouse, Rat: We have preliminary internal testing data to indicate this antibody may not react with these species. Please contact us for more information.</p>

#### Properties

<b>Form</b>	Liquid
<b>Storage instructions</b>	Shipped at 4°C. Store at +4°C short term (1-2 weeks). Upon delivery aliquot. Store at -20°C. Avoid freeze / thaw cycle.
<b>Storage buffer</b>	<p>pH: 7.20</p> <p>Preservative: 0.01% Sodium azide</p> <p>Constituents: 59% PBS, 40% Glycerol (glycerin, glycerine), 0.05% BSA</p>
<b>Purity</b>	Protein A purified
<b>Clonality</b>	Monoclonal
<b>Clone number</b>	EPR5576(2)
<b>Isotype</b>	IgG

## Applications

### The Abpromise guarantee

Our **Abpromise guarantee** covers the use of ab126625 in the following tested applications.

The application notes include recommended starting dilutions; optimal dilutions/concentrations should be determined by the end user.

Application	Abreviews	Notes
Flow Cyt (Intra)		1/20. <b>ab172730</b> - Rabbit monoclonal IgG, is suitable for use as an isotype control with this antibody.
ICC/IF		1/50.
WB	★★★★★ (1)	1/10000. Detects a band of approximately 150 kDa (predicted molecular weight: 107 kDa).
IHC-P		1/150. Perform heat mediated antigen retrieval with citrate buffer pH 6 before commencing with IHC staining protocol.

## Target

### Function

Core component of the CAF-1 complex, a complex thought to mediate chromatin assembly in DNA replication and DNA repair. Assembles histone octamers onto replicating DNA in vitro. CAF-1 performs the first step of the nucleosome assembly process, bringing newly synthesized histones H3 and H4 to replicating DNA; histones H2A/H2B can bind to this chromatin precursor subsequent to DNA replication to complete the histone octamer. CHAF1A binds to histones H3 and H4. It may play a role in heterochromatin maintenance in proliferating cells by bringing newly synthesized cbx proteins to heterochromatic DNA replication foci (By similarity). The CCR4-NOT complex functions as general transcription regulation complex. Also involved in vitamin D-coupled transcription regulation via its association with the WINAC complex, a chromatin-remodeling complex recruited by vitamin D receptor (VDR), which is required for the ligand-bound VDR-mediated transrepression of the CYP27B1 gene.

### Sequence similarities

Belongs to the CHAF1A family.

### Developmental stage

Active complex is found in G1, S and G2 phases.

### Domain

Contains one Pro-Xaa-Val-Xaa-Leu (PxVxL) motif, which is required for interaction with chromoshadow domains. This motif requires additional residues -7, -6, +4 and +5 of the central Val which contact the chromoshadow domain.

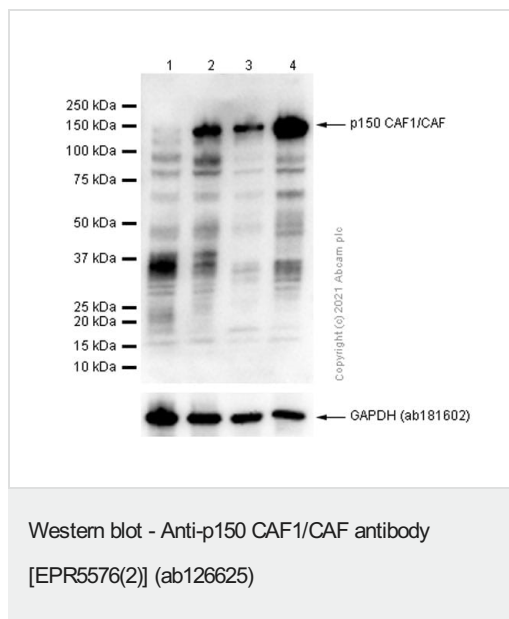
### Post-translational modifications

Phosphorylated upon DNA damage, probably by ATM or ATR.

### Cellular localization

Nucleus. DNA replication foci.

## Images



**All lanes :** Anti-p150 CAF1/CAF antibody [EPR5576(2)] (ab126625) at 1/10000 dilution (Purified)

**Lane 1 :** HeLa (Human cervix adenocarcinoma epithelial cell) whole cell lysate

**Lane 2 :** HeLa (Human cervix adenocarcinoma epithelial cell) starved 24 hours and treated with 500ng/ml nocodazole for 24 hours whole cell lysate

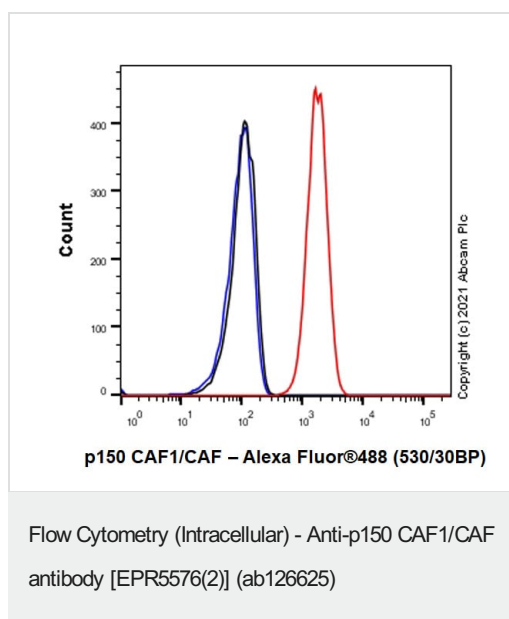
**Lane 3 :** MCF7 (Human breast adenocarcinoma epithelial cell) whole cell lysate

**Lane 4 :** K-562 (Human chronic myelogenous leukemia lymphoblast) whole cell lysate

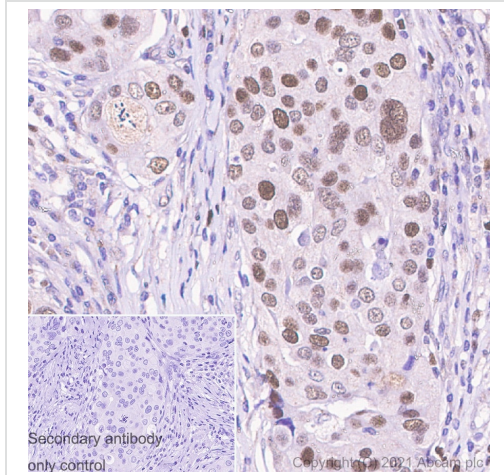
### Secondary

**All lanes :** Goat Anti-Rabbit IgG H&L (HRP) ([ab97051](#)) at 1/20000 dilution

**Predicted band size:** 107 kDa

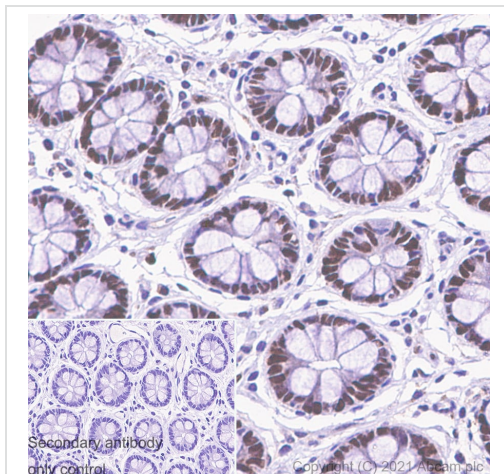


Flow Cytometry analysis of HeLa (Human cervix adenocarcinoma epithelial cell) cells labelling p150 CAF1/CAF with Purified ab126625 at 1:20 dilution (10 µg/ml) (Red). Cells were fixed with 4% Paraformaldehyde and permeabilised with 90% Methanol. A Goat anti rabbit IgG (Alexa Fluor® 488, [ab150077](#)) secondary antibody was used at 1:2000. Isotype control - Rabbit monoclonal IgG (Black). Unlabelled control - Cell without incubation with primary antibody and secondary antibody (Blue).



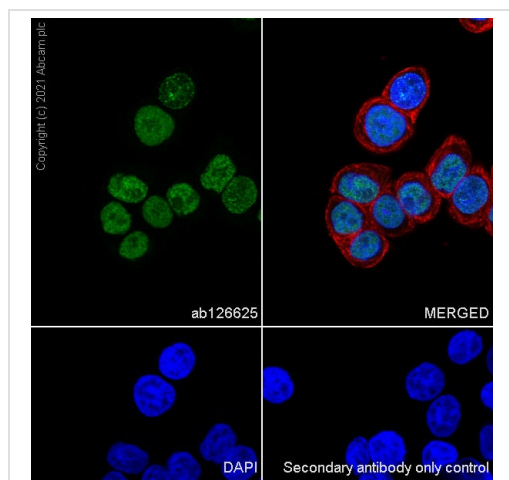
Immunohistochemistry (Formalin/PFA-fixed paraffin-embedded sections) - Anti-p150 CAF1/CAF antibody [EPR5576(2)] (ab126625)

Immunohistochemistry (Formalin/PFA-fixed paraffin-embedded sections) analysis of human breast carcinoma tissue sections labeling p150 CAF1/CAF with Purified ab126625 at 1:150 (0.9 µg/ml). Heat mediated antigen retrieval was performed using Heat mediated antigen retrieval using Bond™ Epitope Retrieval Solution 2 (pH 9.0) . Tissue was counterstained with Hematoxylin. Rabbit specific IHC polymer detection kit HRP/DAB (**ab209101**) secondary antibody was used at 1:0 dilution. PBS instead of the primary antibody was used as the negative control.



Immunohistochemistry (Formalin/PFA-fixed paraffin-embedded sections) - Anti-p150 CAF1/CAF antibody [EPR5576(2)] (ab126625)

Immunohistochemistry (Formalin/PFA-fixed paraffin-embedded sections) analysis of human colon tissue sections labeling p150 CAF1/CAF with Purified ab126625 at 1:150 (0.9 µg/ml). Heat mediated antigen retrieval was performed using Heat mediated antigen retrieval using Bond™ Epitope Retrieval Solution 2 (pH 9.0) . Tissue was counterstained with Hematoxylin. Rabbit specific IHC polymer detection kit HRP/DAB (**ab209101**) secondary antibody was used at 1:0 dilution. PBS instead of the primary antibody was used as the negative control.



Immunocytochemistry/ Immunofluorescence - Anti-p150 CAF1/CAF antibody [EPR5576(2)] (ab126625)

Immunocytochemistry analysis of HT-29 (Human colorectal adenocarcinoma epithelial cell) cells labeling p150 CAF1/CAF with Purified ab126625 at 1:50 dilution (2.7 µg/ml). Cells were fixed in 4% Paraformaldehyde and permeabilized with 0.1% tritonX-100. Cells were counterstained with Ab195889 Anti-alpha Tubulin antibody [DM1A] - Microtubule Marker (Alexa Fluor® 594) 1:200 (2.5 µg/ml). Goat anti rabbit IgG (Alexa Fluor® 488, **ab150077**) was used as the secondary antibody at 1:1000 (2 µg/ml) dilution. DAPI (blue) was used as nuclear counterstain. PBS instead of the primary antibody was used as the secondary antibody only control.

Why choose a recombinant antibody?

 <p><b>Research with confidence</b> Consistent and reproducible results</p>	 <p><b>Long-term and scalable supply</b> Recombinant technology</p>
 <p><b>Success from the first experiment</b> Confirmed specificity</p>	 <p><b>Ethical standards compliant</b> Animal-free production</p>

Anti-p150 CAF1/CAF antibody [EPR5576(2)]  
(ab126625)

**Please note:** All products are "FOR RESEARCH USE ONLY. NOT FOR USE IN DIAGNOSTIC PROCEDURES"

#### Our Abpromise to you: Quality guaranteed and expert technical support

- Replacement or refund for products not performing as stated on the datasheet
- Valid for 12 months from date of delivery
- Response to your inquiry within 24 hours
- We provide support in Chinese, English, French, German, Japanese and Spanish

- Extensive multi-media technical resources to help you
- We investigate all quality concerns to ensure our products perform to the highest standards

If the product does not perform as described on this datasheet, we will offer a refund or replacement. For full details of the Abpromise, please visit <https://www.abcam.com/abpromise> or contact our technical team.

#### **Terms and conditions**

---

- Guarantee only valid for products bought direct from Abcam or one of our authorized distributors