

Anti-P15RS antibody ab88304

[3 Images](#)

Overview

Product name	Anti-P15RS antibody
Description	Mouse polyclonal to P15RS
Host species	Mouse
Tested applications	Suitable for: WB, ICC/IF
Species reactivity	Reacts with: Human
Immunogen	Recombinant full length protein within Human P15RS. The exact immunogen sequence used to generate this antibody is proprietary information. If additional detail on the immunogen is needed to determine the suitability of the antibody for your needs, please contact our Scientific Support team to discuss your requirements.
Positive control	WB: human liver tissue lysate, P15RS transfected 293T cell lysate ICC/IF: HeLa cells
General notes	<p>The Life Science industry has been in the grips of a reproducibility crisis for a number of years. Abcam is leading the way in addressing this with our range of recombinant monoclonal antibodies and knockout edited cell lines for gold-standard validation. Please check that this product meets your needs before purchasing.</p> <p>If you have any questions, special requirements or concerns, please send us an inquiry and/or contact our Support team ahead of purchase. Recommended alternatives for this product can be found below, along with publications, customer reviews and Q&As</p>

Properties

Form	Liquid
Storage instructions	Shipped at 4°C. Upon delivery aliquot and store at -20°C or -80°C. Avoid repeated freeze / thaw cycles.
Storage buffer	pH: 7.40 Constituent: 100% PBS
Purity	Protein A purified
Clonality	Polyclonal
Isotype	IgG

Applications

The Abpromise guarantee

Our **Abpromise guarantee** covers the use of ab88304 in the following tested applications.

The application notes include recommended starting dilutions; optimal dilutions/concentrations should be determined by the end user.

Application	Abreviews	Notes
WB		
ICC/IF		

Application notes

ICC/IF: Use at a concentration of 10 µg/ml.

WB: Use at a concentration of 1 µg/ml. Predicted molecular weight: 36 kDa for isoform 1 and 33 kDa for isoform 2.

Not yet tested in other applications.

Optimal dilutions/concentrations should be determined by the end user.

Target

Function

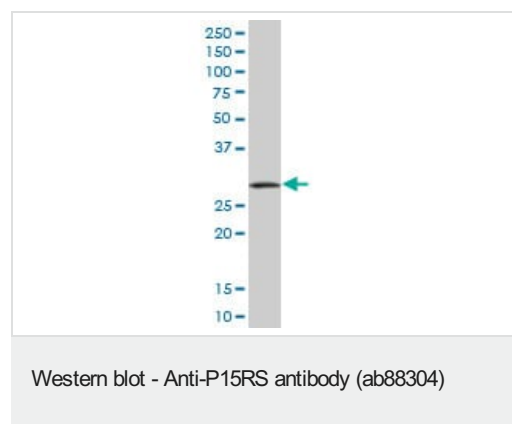
Interacts with phosphorylated C-terminal heptapeptide repeat domain (CTD) of the largest RNA polymerase II subunit POLR2A, and participates in dephosphorylation of the CTD. May act as a negative regulator of cyclin-D1 (CCND1) and cyclin-E (CCNE1) in the cell cycle.

Sequence similarities

Belongs to the UPF0400 (RTT103) family.

Contains 1 CID domain.

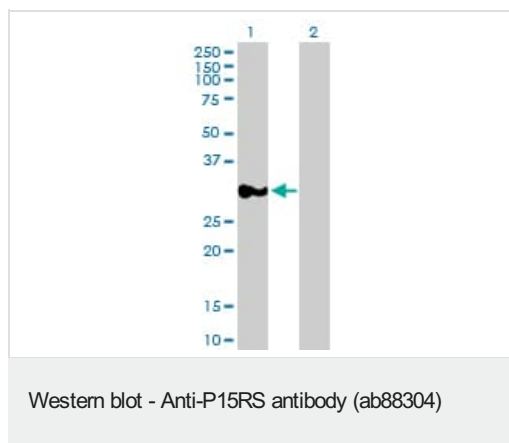
Images



Anti-P15RS antibody (ab88304) at 1 µg/ml + human liver tissue lysate at 50 µg

Predicted band size: 33 kDa

Observed band size: 30 kDa



All lanes : Anti-P15RS antibody (ab88304) at 1 µg/ml

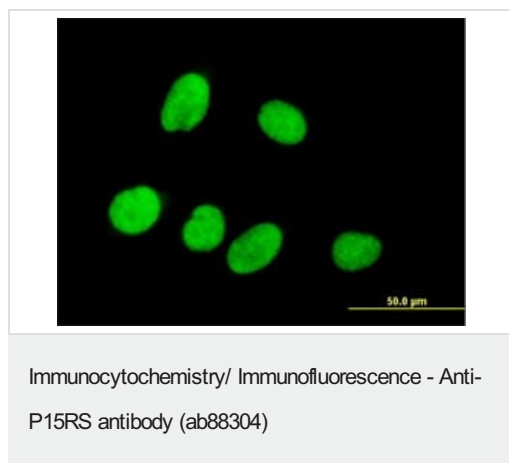
Lane 1 : P15RS transfected 293T cell lysate

Lane 2 : Non transfected 293T cell lysate

Lysates/proteins at 50 µg per lane.

Predicted band size: 33 kDa

Observed band size: 32 kDa



ab88304, at 10 µg/ml, staining P15RS in HeLa cell by Immunofluorescence.

Please note: All products are "FOR RESEARCH USE ONLY. NOT FOR USE IN DIAGNOSTIC PROCEDURES"

Our Abpromise to you: Quality guaranteed and expert technical support

- Replacement or refund for products not performing as stated on the datasheet
- Valid for 12 months from date of delivery
- Response to your inquiry within 24 hours
- We provide support in Chinese, English, French, German, Japanese and Spanish
- Extensive multi-media technical resources to help you
- We investigate all quality concerns to ensure our products perform to the highest standards

If the product does not perform as described on this datasheet, we will offer a refund or replacement. For full details of the Abpromise, please visit <https://www.abcam.com/abpromise> or contact our technical team.

Terms and conditions

- Guarantee only valid for products bought direct from Abcam or one of our authorized distributors