

Product datasheet

Anti-p40-phox antibody [EP2142Y] ab76158

Recombinant RabMAb

★★★★★ [1 Abreviews](#) [5 References](#) [6 Images](#)

Overview

Product name	Anti-p40-phox antibody [EP2142Y]
Description	Rabbit monoclonal [EP2142Y] to p40-phox
Host species	Rabbit
Tested applications	Suitable for: Flow Cyt (Intra), ICC/IF, WB, IP, IHC-P
Species reactivity	Reacts with: Human
Immunogen	Synthetic peptide within Human p40-phox aa 300-400 (C terminal). The exact sequence is proprietary.
Positive control	WB: HL60 cell lysate. IHC: human spleen tissue. IF/ICC: MCF7 cell line. IP: HL-60. Flow Cyt: K562 cells.
General notes	<p>This product is a recombinant monoclonal antibody, which offers several advantages including:</p> <ul style="list-style-type: none">- High batch-to-batch consistency and reproducibility- Improved sensitivity and specificity- Long-term security of supply- Animal-free production <p>For more information see here.</p> <p>Our RabMAb[®] technology is a patented hybridoma-based technology for making rabbit monoclonal antibodies. For details on our patents, please refer to RabMAb[®] patents.</p> <p>Mouse, Rat: We have preliminary internal testing data to indicate this antibody may not react with these species. Please contact us for more information.</p>

Properties

Form	Liquid
Storage instructions	Shipped at 4°C. Upon delivery aliquot and store at -20°C. Avoid freeze / thaw cycles.
Storage buffer	pH: 7.20 Preservative: 0.01% Sodium azide Constituents: 9% PBS, 40% Glycerol (glycerin, glycerine), 0.05% BSA, 50% Tissue culture supernatant
Purity	Protein A purified

Clonality	Monoclonal
Clone number	EP2142Y
Isotype	IgG

Applications

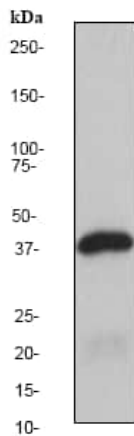
The Abpromise guarantee Our **Abpromise guarantee** covers the use of ab76158 in the following tested applications. The application notes include recommended starting dilutions; optimal dilutions/concentrations should be determined by the end user.

Application	Abreviews	Notes
Flow Cyt (Intra)		1/20 - 1/100. ab172730 - Rabbit monoclonal IgG, is suitable for use as an isotype control with this antibody.
ICC/IF		1/100 - 1/250.
WB	★★★★★ (1)	1/25000 - 1/50000. Detects a band of approximately 39 kDa (predicted molecular weight: 39 kDa).
IP		1/50.
IHC-P		1/100 - 1/250.

Target

Function	Component of the NADPH-oxidase, a multicomponent enzyme system responsible for the oxidative burst in which electrons are transported from NADPH to molecular oxygen, generating reactive oxidant intermediates. It may be important for the assembly and/or activation of the NADPH-oxidase complex.
Tissue specificity	Expression is restricted to hematopoietic cells.
Sequence similarities	Contains 1 PX (phox homology) domain. Contains 1 SH3 domain.
Cellular localization	Cytoplasm.

Images



Western blot - Anti-p40-phox antibody [EP2142Y] (ab76158)

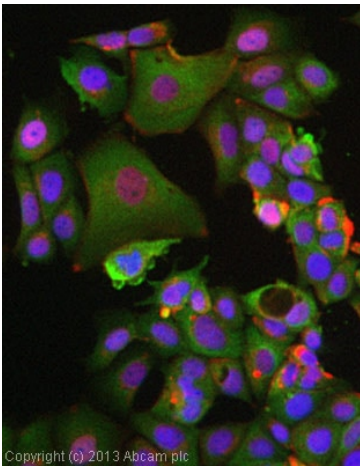
Anti-p40-phox antibody [EP2142Y] (ab76158) at 1/50000 dilution + HL60 cell lysate at 10 µg

Secondary

Goat anti-rabbit HRP conjugated at 1/2000 dilution

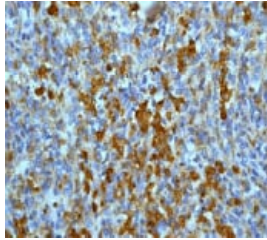
Predicted band size: 39 kDa

Observed band size: 39 kDa



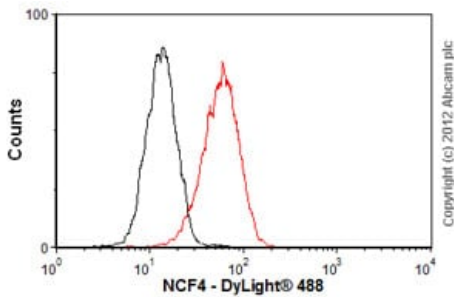
Immunocytochemistry/ Immunofluorescence - Anti-p40-phox antibody [EP2142Y] (ab76158)

ICC/IF image of ab76158 stained MCF7 cells. The cells were 4% formaldehyde fixed (10 min) and then incubated in 1%BSA / 10% normal goat serum / 0.3M glycine in 0.1% PBS-Tween for 1h to permeabilise the cells and block non-specific protein-protein interactions. The cells were then incubated with the antibody (ab76158, 1/25 dilution) overnight at +4°C. The secondary antibody (green) was **ab96899**, DyLight® 488 goat anti-rabbit IgG (H+L) used at a 1/250 dilution for 1h. Alexa Fluor® 594 WGA was used to label plasma membranes (red) at a 1/200 dilution for 1h. DAPI was used to stain the cell nuclei (blue) at a concentration of 1.43µM.



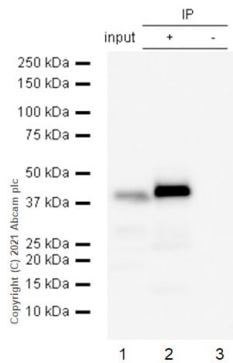
Immunohistochemistry (Formalin/PFA-fixed paraffin-embedded sections) - Anti-p40-phox antibody [EP2142Y] (ab76158)

ab76158 at 1/100-1/250 dilution staining p40-phox in human spleen by Immunohistochemistry, Paraffin-embedded tissue.



Flow Cytometry (Intracellular) - Anti-p40-phox antibody [EP2142Y] (ab76158)

Overlay histogram showing K562 cells stained with ab76158 (red line). The cells were fixed with 80% methanol (5 min) and then permeabilized with 0.1% PBS-Tween for 20 min. The cells were then incubated in 1x PBS / 10% normal goat serum / 0.3M glycine to block non-specific protein-protein interactions followed by the antibody (ab76158, 1/100 dilution) for 30 min at 22°C. The secondary antibody used was DyLight® 488 goat anti-rabbit IgG (H+L) ([ab96899](#)) at 1/500 dilution for 30 min at 22°C. Isotype control antibody (black line) was rabbit IgG (monoclonal) (1µg/1x10⁶ cells) used under the same conditions. Acquisition of >5,000 events was performed.



Immunoprecipitation - Anti-p40-phox antibody [EP2142Y] (ab76158)

p40-phox was immunoprecipitated from 0.35 mg HL-60 (Human acute promyelocytic leukemia promyeloblast) whole cell lysate 10 µg with 76158 at 1/50 dilution (2µg). VeriBlot for IP Detection Reagent (HRP)([ab131366](#)) was used at 1/5000 dilution.





Lane 1: HL-60 (Human acute promyelocytic leukemia promyeloblast) whole cell lysate 10 µg

Lane 2: ab76158 IP in HL-60 whole cell lysate

Lane 3: Rabbit monoclonal IgG ([ab172730](#)) instead of ab76158 in HL-60 whole cell lysate

Blocking and dilution buffer and concentration: 5% NFD/MTBST.

Why choose a recombinant antibody?

 <p>Research with confidence Consistent and reproducible results</p>	 <p>Long-term and scalable supply Recombinant technology</p>
 <p>Success from the first experiment Confirmed specificity</p>	 <p>Ethical standards compliant Animal-free production</p>

Anti-p40-phox antibody [EP2142Y] (ab76158)

Please note: All products are "FOR RESEARCH USE ONLY. NOT FOR USE IN DIAGNOSTIC PROCEDURES"

Our Abpromise to you: Quality guaranteed and expert technical support

- Replacement or refund for products not performing as stated on the datasheet
- Valid for 12 months from date of delivery
- Response to your inquiry within 24 hours
- We provide support in Chinese, English, French, German, Japanese and Spanish
- Extensive multi-media technical resources to help you
- We investigate all quality concerns to ensure our products perform to the highest standards

If the product does not perform as described on this datasheet, we will offer a refund or replacement. For full details of the Abpromise, please visit <https://www.abcam.com/abpromise> or contact our technical team.

Terms and conditions

- Guarantee only valid for products bought direct from Abcam or one of our authorized distributors