




Product datasheet

Anti-P4HA1 antibody ab244400

[2 References](#) [8 Images](#)

Overview

Product name	Anti-P4HA1 antibody
Description	Rabbit polyclonal to P4HA1
Host species	Rabbit
Tested applications	Suitable for: IHC-P, WB, ICC/IF
Species reactivity	Reacts with: Mouse, Rat, Human Predicted to work with: Cow, Orangutan 
Immunogen	Recombinant fragment within Human P4HA1 aa 150-350. The exact immunogen sequence used to generate this antibody is proprietary information. If additional detail on the immunogen is needed to determine the suitability of the antibody for your needs, please contact our Scientific Support team to discuss your requirements. Database link: P13674  Run BLAST with  Run BLAST with
Positive control	ICC/IF: U-2 OS cells. WB: PC-3 and HEK293T cell lysate. NIH3T3 and NBT-II cell lysate. IHC-P: Human placenta, endometrium, testis, cerebellum and pancreas tissue.
General notes	<p>The Life Science industry has been in the grips of a reproducibility crisis for a number of years. Abcam is leading the way in addressing this with our range of recombinant monoclonal antibodies and knockout edited cell lines for gold-standard validation. Please check that this product meets your needs before purchasing.</p> <p>If you have any questions, special requirements or concerns, please send us an inquiry and/or contact our Support team ahead of purchase. Recommended alternatives for this product can be found below, along with publications, customer reviews and Q&As</p>

Properties

Form	Liquid
Storage instructions	Shipped at 4°C. Store at +4°C short term (1-2 weeks). Upon delivery aliquot. Store at -20°C long term. Avoid freeze / thaw cycle.
Storage buffer	pH: 7.20 Preservative: 0.02% Sodium azide Constituents: PBS, 40% Glycerol (glycerin, glycerine)
Purity	Immunogen affinity purified

Clonality	Polyclonal
Isotype	IgG

Applications

The Abpromise guarantee Our **Abpromise guarantee** covers the use of ab244400 in the following tested applications.

The application notes include recommended starting dilutions; optimal dilutions/concentrations should be determined by the end user.

Application	Abreviews	Notes
IHC-P		1/1000 - 1/2500. Perform heat mediated antigen retrieval with citrate buffer pH 6 before commencing with IHC staining protocol.
WB		Use a concentration of 0.04 - 0.4 µg/ml.
ICC/IF		Use a concentration of 0.25 - 2 µg/ml. Fixation/Permeabilization: PFA/Triton X-100.

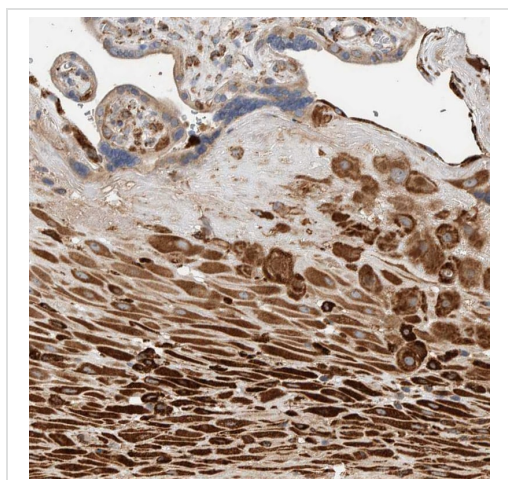
Target

Function Catalyzes the post-translational formation of 4-hydroxyproline in -Xaa-Pro-Gly- sequences in collagens and other proteins.

Sequence similarities Belongs to the P4HA family.
Contains 1 Fe2OG dioxygenase domain.
Contains 1 TPR repeat.

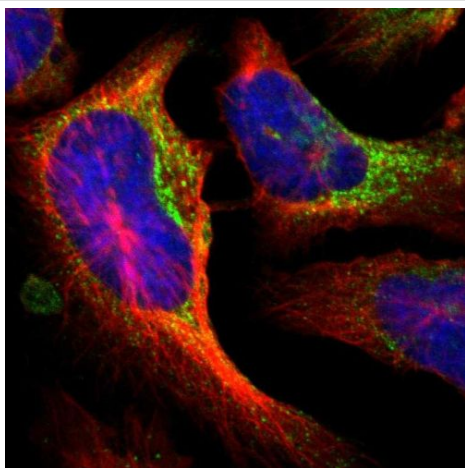
Cellular localization Endoplasmic reticulum lumen.

Images



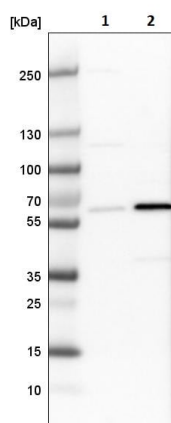
Paraffin-embedded human placenta tissue stained for P4HA1 using ab244400 at 1/2500 dilution in immunohistochemical analysis.

Immunohistochemistry (Formalin/PFA-fixed paraffin-embedded sections) - Anti-P4HA1 antibody (ab244400)



Immunocytochemistry/ Immunofluorescence - Anti-P4HA1 antibody (ab244400)

PFA-fixed, Triton X-100 permeabilized U-2 OS (human bone osteosarcoma epithelial cell line) cells stained for P4HA1 (green) using ab244400 at 4 $\mu\text{g/ml}$ in ICC/IF.

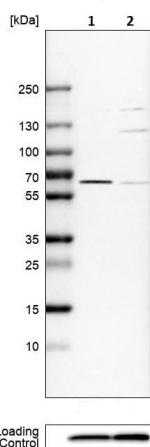


Western blot - Anti-P4HA1 antibody (ab244400)

All lanes : Anti-P4HA1 antibody (ab244400) at 0.4 $\mu\text{g/ml}$

Lane 1 : NIH/3T3 (Mouse embryo fibroblast cell line) cell lysate

Lane 2 : NBT-II (Rat cell line) cell lysate

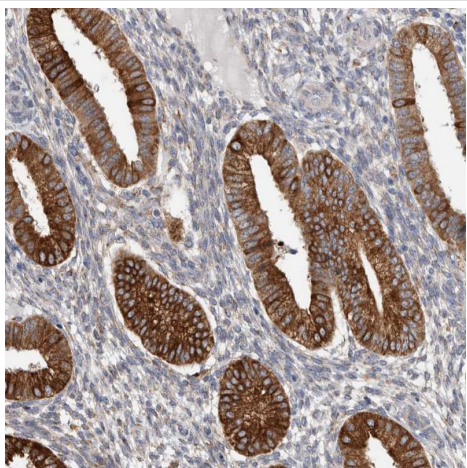


Western blot - Anti-P4HA1 antibody (ab244400)

All lanes : Anti-P4HA1 antibody (ab244400) at 0.4 $\mu\text{g/ml}$

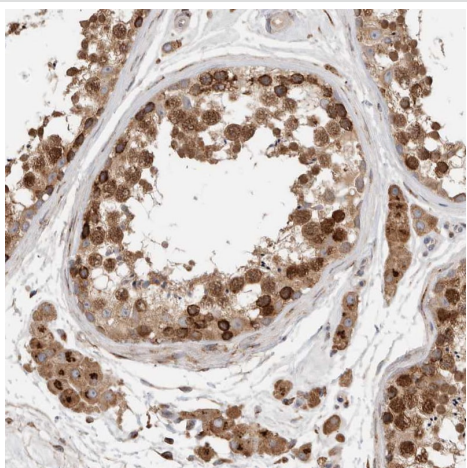
Lane 1 : PC-3 (Human prostate adenocarcinoma cell line) cell lysate

Lane 2 : HEK-293 (Human epithelial cell line from embryonic kidney) cell lysate



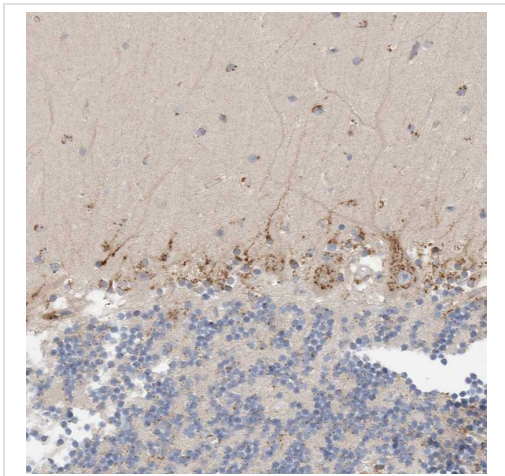
Paraffin-embedded human endometrium tissue stained for P4HA1 using ab244400 at 1/2500 dilution in immunohistochemical analysis.

Immunohistochemistry (Formalin/PFA-fixed paraffin-embedded sections) - Anti-P4HA1 antibody (ab244400)



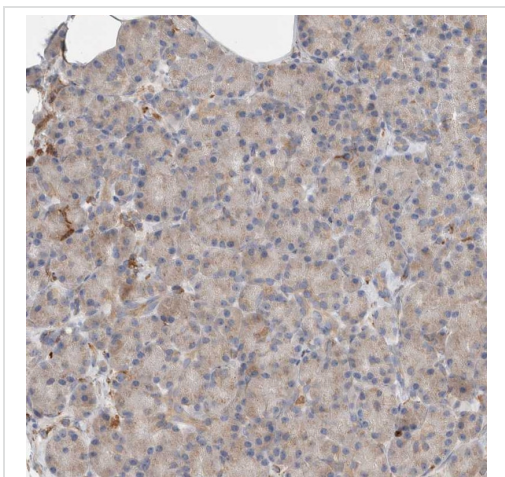
Paraffin-embedded human testis tissue stained for P4HA1 using ab244400 at 1/2500 dilution in immunohistochemical analysis.

Immunohistochemistry (Formalin/PFA-fixed paraffin-embedded sections) - Anti-P4HA1 antibody (ab244400)



Paraffin-embedded human cerebellum tissue stained for P4HA1 using ab244400 at 1/2500 dilution in immunohistochemical analysis.

Immunohistochemistry (Formalin/PFA-fixed paraffin-embedded sections) - Anti-P4HA1 antibody (ab244400)



Paraffin-embedded human pancreas tissue stained for P4HA1 using ab244400 at 1/2500 dilution in immunohistochemical analysis.

Immunohistochemistry (Formalin/PFA-fixed paraffin-embedded sections) - Anti-P4HA1 antibody (ab244400)

Please note: All products are "FOR RESEARCH USE ONLY. NOT FOR USE IN DIAGNOSTIC PROCEDURES"

Our Abpromise to you: Quality guaranteed and expert technical support

- Replacement or refund for products not performing as stated on the datasheet
- Valid for 12 months from date of delivery
- Response to your inquiry within 24 hours
- We provide support in Chinese, English, French, German, Japanese and Spanish
- Extensive multi-media technical resources to help you
- We investigate all quality concerns to ensure our products perform to the highest standards

If the product does not perform as described on this datasheet, we will offer a refund or replacement. For full details of the Abpromise,

please visit <https://www.abcam.com/abpromise> or contact our technical team.

Terms and conditions

- Guarantee only valid for products bought direct from Abcam or one of our authorized distributors