

Product datasheet

Anti-P70 S6 Kinase beta/SRK antibody [EPR14956] - N-terminal ab184551


KO VALIDATED

Recombinant

RabMAb[®]

[13 References](#) [7 Images](#)

Overview

Product name	Anti-P70 S6 Kinase beta/SRK antibody [EPR14956] - N-terminal
Description	Rabbit monoclonal [EPR14956] to P70 S6 Kinase beta/SRK - N-terminal
Host species	Rabbit
Tested applications	Suitable for: Flow Cyt (Intra), WB, IHC-P, ICC/IF
Species reactivity	Reacts with: Human Predicted to work with: Mouse, Rat 
Immunogen	Recombinant fragment. This information is proprietary to Abcam and/or its suppliers.
Positive control	Human fetal liver lysate, Jurkat and K562 cell lysates, Human pancreas tissue. HeLa cells.
General notes	This product is a recombinant monoclonal antibody, which offers several advantages including: <ul style="list-style-type: none"> - High batch-to-batch consistency and reproducibility - Improved sensitivity and specificity - Long-term security of supply - Animal-free production For more information see here . Our RabMAb [®] technology is a patented hybridoma-based technology for making rabbit monoclonal antibodies. For details on our patents, please refer to RabMAb[®] patents .

Properties

Form	Liquid
Storage instructions	Shipped at 4°C. Store at +4°C short term (1-2 weeks). Upon delivery aliquot. Store at -20°C long term. Avoid freeze / thaw cycle.
Storage buffer	pH: 7.2 Preservative: 0.01% Sodium azide Constituents: 40% Glycerol (glycerin, glycerine), 59% PBS, 0.05% BSA
Purity	Protein A purified
Clonality	Monoclonal
Clone number	EPR14956

Isotype

IgG

Applications

The Abpromise guarantee Our **Abpromise guarantee** covers the use of ab184551 in the following tested applications. The application notes include recommended starting dilutions; optimal dilutions/concentrations should be determined by the end user.

Application	Abreviews	Notes
Flow Cyt (Intra)		1/100. ab172730 - Rabbit monoclonal IgG, is suitable for use as an isotype control with this antibody.
WB		1/10000 - 1/50000. Detects a band of approximately 53 kDa (predicted molecular weight: 53 kDa).
IHC-P		1/50. Perform heat mediated antigen retrieval with Tris/EDTA buffer pH 9.0 before commencing with IHC staining protocol.
ICC/IF		1/250.

Target

Function

Phosphorylates specifically ribosomal protein S6.

Sequence similarities

Belongs to the protein kinase superfamily. AGC Ser/Thr protein kinase family. S6 kinase subfamily.

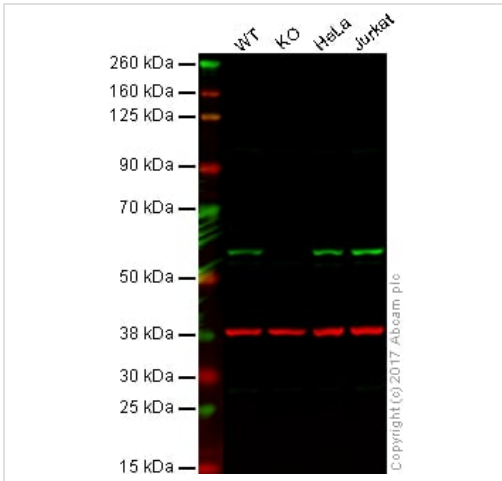
Contains 1 AGC-kinase C-terminal domain.

Contains 1 protein kinase domain.

Post-translational modifications

Phosphorylated upon DNA damage, probably by ATM or ATR.

Images



Western blot - Anti-P70 S6 Kinase beta/SRK antibody [EPR14956] - N-terminal (ab184551)

Lane 1: Wild-type HAP1 whole cell lysate (20 µg)

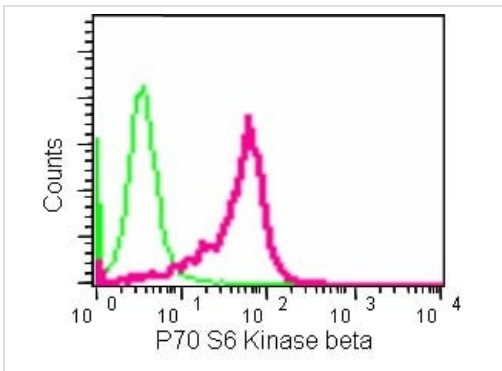
Lane 2: RPS6KB2 knockout HAP1 whole cell lysate (20 µg)

Lane 3: HeLa whole cell lysate (20 µg)

Lane 4: Jurkat whole cell lysate (20 µg)

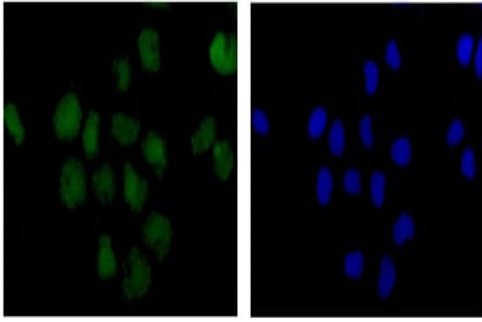
Lanes 1 - 4: Merged signal (red and green). Green - ab184551 observed at 53 kDa. Red - loading control, **ab8245**, observed at 37 kDa.

ab184551 was shown to specifically react with P70 S6 Kinase beta/SRK in wild-type HAP1 cells. No band was observed when RPS6KB2 knockout samples were used. Wild-type and RPS6KB2 knockout samples were subjected to SDS-PAGE. Ab184551 and **ab8245** (Mouse anti GAPDH loading control) were incubated overnight at 4°C at 1/1000 dilution and 1/10,000 dilution respectively. Blots were developed with Goat anti-Rabbit IgG H&L (IRDye® 800CW) preabsorbed **ab216773** and Goat anti-Mouse IgG H&L (IRDye® 680RD) preabsorbed **ab216776** secondary antibodies at 1/20,000 dilution for 1 hour at room temperature before imaging.



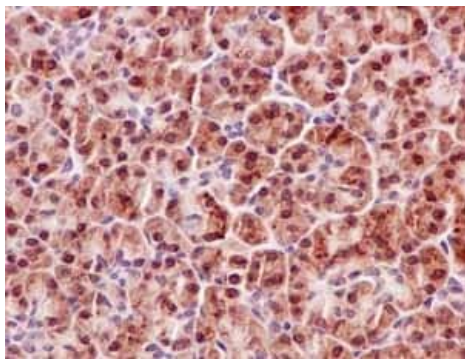
Flow Cytometry (Intracellular) - Anti-P70 S6 Kinase beta/SRK antibody [EPR14956] - N-terminal (ab184551)

Intracellular Flow Cytometry analysis of 2% paraformaldehyde fixed HeLa cells labeling P70 S6 Kinase beta/SRK using ab184551 at a 1/100 dilution (red) or a Rabbit monoclonal IgG (green). Goat anti rabbit IgG (FITC) secondary at a 1/150 dilution



Immunocytochemistry/ Immunofluorescence - Anti-P70 S6 Kinase beta/SRK antibody [EPR14956] - N-terminal (ab184551)

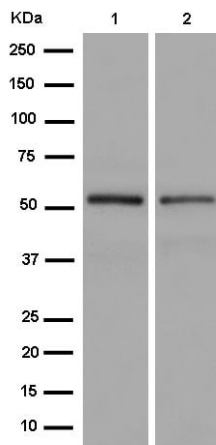
Immunofluorescent staining of 4% paraformaldehyde fixed HeLa cells labeling P70 S6 Kinase beta/SRK using ab184551 at a 1/250 dilution and a Goat anti rabbit IgG (Alexa Fluor® 488) secondary at a 1/200 dilution (green) costained with Dapi (blue).



Immunohistochemistry (Formalin/PFA-fixed paraffin-embedded sections) - Anti-P70 S6 Kinase beta/SRK antibody [EPR14956] - N-terminal (ab184551)

Immunohistochemical analysis of paraffin-embedded Human pancreas labeling P70 S6 Kinase beta/SRK using ab184551 at a 1/50 dilution, counterstained with Hematoxylin.

Perform heat mediated antigen retrieval with EDTA buffer pH 9 before commencing with IHC staining protocol.



Western blot - Anti-P70 S6 Kinase beta/SRK antibody [EPR14956] - N-terminal (ab184551)

All lanes : Anti-P70 S6 Kinase beta/SRK antibody [EPR14956] - N-terminal (ab184551) at 1/50000 dilution

Lane 1 : Jurkat cell lysate

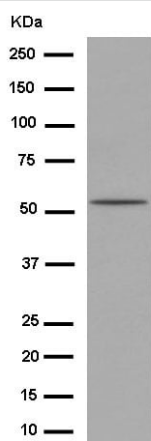
Lane 2 : K562 cell lysate

Lysates/proteins at 20 µg per lane.

Secondary

All lanes : Goat Anti-Rabbit IgG, (H+L), Peroxidase conjugated at 1/1000 dilution

Predicted band size: 53 kDa



Anti-P70 S6 Kinase beta/SRK antibody [EPR14956] - N-terminal (ab184551) at 1/10000 dilution + Human fetal liver lysate at 10 µg

Secondary

Anti-Rabbit IgG (HRP), specific to the non-reduced form of IgG at 1/1000 dilution

Predicted band size: 53 kDa

Western blot - Anti-P70 S6 Kinase beta/SRK antibody [EPR14956] - N-terminal (ab184551)

Why choose a recombinant antibody?



Research with confidence
Consistent and reproducible results



Long-term and scalable supply
Recombinant technology



Success from the first experiment
Confirmed specificity



Ethical standards compliant
Animal-free production

Anti-P70 S6 Kinase beta/SRK antibody [EPR14956] - N-terminal (ab184551)

Please note: All products are "FOR RESEARCH USE ONLY. NOT FOR USE IN DIAGNOSTIC PROCEDURES"

Our Abpromise to you: Quality guaranteed and expert technical support

- Replacement or refund for products not performing as stated on the datasheet
- Valid for 12 months from date of delivery
- Response to your inquiry within 24 hours
- We provide support in Chinese, English, French, German, Japanese and Spanish
- Extensive multi-media technical resources to help you
- We investigate all quality concerns to ensure our products perform to the highest standards

If the product does not perform as described on this datasheet, we will offer a refund or replacement. For full details of the Abpromise, please visit <https://www.abcam.com/abpromise> or contact our technical team.

Terms and conditions

- Guarantee only valid for products bought direct from Abcam or one of our authorized distributors