


Product datasheet

Anti-PAK1 antibody ab183894

[5 Images](#)

Overview

Product name	Anti-PAK1 antibody
Description	Rabbit polyclonal to PAK1
Host species	Rabbit
Tested applications	Suitable for: IHC-P, WB, ICC/IF
Species reactivity	Reacts with: Mouse, Rat, Human Predicted to work with: Cow 
Immunogen	Recombinant fragment within Human PAK1 aa 151-544. The exact sequence is proprietary. Database link: Q13153
Positive control	Hepatoma tissue. A431 cells. HeLa, A431, BCL-1 and rat PC12 whole cell lysates/extracts.
General notes	<p>The Life Science industry has been in the grips of a reproducibility crisis for a number of years. Abcam is leading the way in addressing this with our range of recombinant monoclonal antibodies and knockout edited cell lines for gold-standard validation. Please check that this product meets your needs before purchasing.</p> <p>If you have any questions, special requirements or concerns, please send us an inquiry and/or contact our Support team ahead of purchase. Recommended alternatives for this product can be found below, along with publications, customer reviews and Q&As</p>

Properties

Form	Liquid
Storage instructions	Shipped at 4°C. Store at +4°C short term (1-2 weeks). Upon delivery aliquot. Store at -20°C long term. Avoid freeze / thaw cycle.
Storage buffer	pH: 7.00 Preservative: 0.01% Thimerosal (merthiolate) Constituents: 1.21% Tris, 0.75% Glycine, 10% Glycerol (glycerin, glycerine)
Purity	Immunogen affinity purified
Clonality	Polyclonal
Isotype	IgG

Applications

The Abpromise guarantee

Our **Abpromise guarantee** covers the use of ab183894 in the following tested applications.

The application notes include recommended starting dilutions; optimal dilutions/concentrations should be determined by the end user.

Application	Abreviews	Notes
IHC-P		1/100 - 1/1000.
WB		1/1000 - 1/10000. Predicted molecular weight: 61 kDa.
ICC/IF		1/100 - 1/1000.

Target

Function

The activated kinase acts on a variety of targets. Likely to be the GTPase effector that links the Rho-related GTPases to the JNK MAP kinase pathway. Activated by CDC42 and RAC1. Involved in dissolution of stress fibers and reorganization of focal complexes. Involved in regulation of microtubule biogenesis through phosphorylation of TBCB. Activity is inhibited in cells undergoing apoptosis, potentially due to binding of CDC2L1 and CDC2L2.

Sequence similarities

Belongs to the protein kinase superfamily. STE Ser/Thr protein kinase family. STE20 subfamily. Contains 1 CRIB domain.
Contains 1 protein kinase domain.

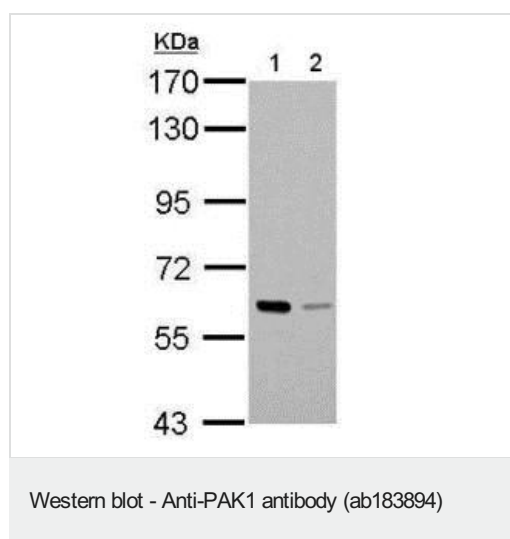
Post-translational modifications

Autophosphorylated when activated by CDC42/p21 and RAC1.

Cellular localization

Cytoplasm. Cell junction > focal adhesion. Recruited to focal adhesions upon activation.

Images



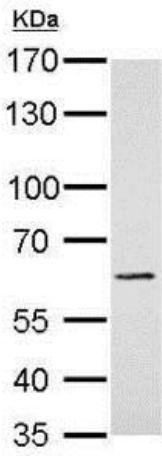
All lanes : Anti-PAK1 antibody (ab183894) at 1/5000 dilution

Lane 1 : A431 whole cell lysate

Lane 2 : HeLa whole cell lysate

Lysates/proteins at 30 µg per lane.

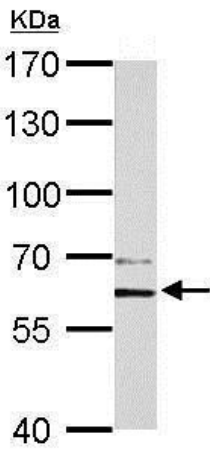
Predicted band size: 61 kDa



Western blot - Anti-PAK1 antibody (ab183894)

Anti-PAK1 antibody (ab183894) at 1/1000 dilution + BCL-1 whole cell lysate/extract at 30 μ g

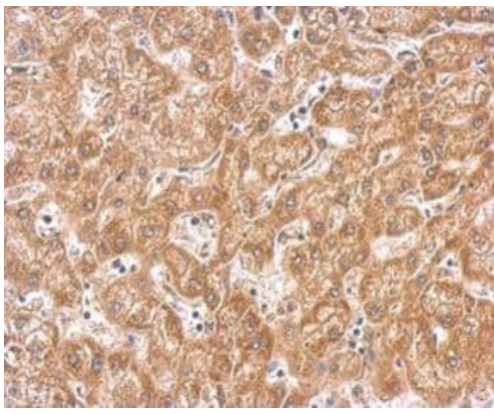
Predicted band size: 61 kDa



Western blot - Anti-PAK1 antibody (ab183894)

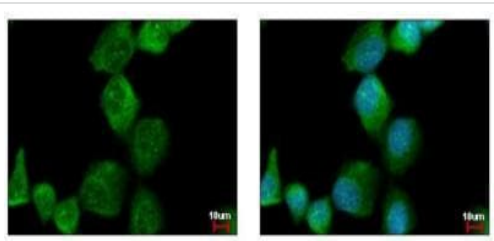
Anti-PAK1 antibody (ab183894) at 1/1000 dilution + rat PC12 whole cell lysate/extract at 30 μ g

Predicted band size: 61 kDa



Immunohistochemical analysis of paraffin-embedded human hepatoma labeling PAK1 using ab183894 at a 1/500 dilution.

Immunohistochemistry (Formalin/PFA-fixed paraffin-embedded sections) - Anti-PAK1 antibody (ab183894)



Immunofluorescence analysis of A431 cells fixed in ice-cold methanol for 5 minutes, labeling PAK1 using ab183894 at a 1/500 dilution (green). Blue: Hoechst 33343 staining.

Immunocytochemistry/ Immunofluorescence - Anti-PAK1 antibody (ab183894)

Please note: All products are "FOR RESEARCH USE ONLY. NOT FOR USE IN DIAGNOSTIC PROCEDURES"

Our Abpromise to you: Quality guaranteed and expert technical support

- Replacement or refund for products not performing as stated on the datasheet
- Valid for 12 months from date of delivery
- Response to your inquiry within 24 hours
- We provide support in Chinese, English, French, German, Japanese and Spanish
- Extensive multi-media technical resources to help you
- We investigate all quality concerns to ensure our products perform to the highest standards

If the product does not perform as described on this datasheet, we will offer a refund or replacement. For full details of the Abpromise, please visit <https://www.abcam.com/abpromise> or contact our technical team.

Terms and conditions

- Guarantee only valid for products bought direct from Abcam or one of our authorized distributors