

## Product datasheet

# Anti-PAK1 (phospho S20) antibody [EP655Y] - BSA and Azide free ab235117

Recombinant RabMAb

2 Images

### Overview

Product name	Anti-PAK1 (phospho S20) antibody [EP655Y] - BSA and Azide free
Description	Rabbit monoclonal [EP655Y] to PAK1 (phospho S20) - BSA and Azide free
Host species	Rabbit
Tested applications	<b>Suitable for:</b> WB <b>Unsuitable for:</b> Flow Cyt, IHC-P or IP
Species reactivity	<b>Reacts with:</b> Human
Immunogen	Synthetic peptide. This information is proprietary to Abcam and/or its suppliers.
Positive control	WB: HeLa cell lysate.
General notes	<p>ab235117 is the carrier-free version of <a href="#">ab51244</a>.</p> <p>Our <b>carrier-free</b> antibodies are typically supplied in a PBS-only formulation, purified and free of BSA, sodium azide and glycerol. The carrier-free buffer and high concentration allow for increased conjugation efficiency.</p> <p>This conjugation-ready format is designed for use with fluorochromes, metal isotopes, oligonucleotides, and enzymes, which makes them ideal for antibody labelling, functional and cell-based assays, flow-based assays (e.g. mass cytometry) and Multiplex Imaging applications.</p> <p>Use our <b>conjugation kits</b> for antibody conjugates that are ready-to-use in as little as 20 minutes with &lt;1 minute hands-on-time and 100% antibody recovery: available for fluorescent dyes, HRP, biotin and gold.</p> <p>This product is compatible with the Maxpar<sup>®</sup> Antibody Labeling Kit from Fluidigm, without the need for antibody preparation. Maxpar<sup>®</sup> is a trademark of Fluidigm Canada Inc.</p> <p>Mouse, Rat: We have preliminary internal testing data to indicate this antibody may not react with these species. Please contact us for more information.</p>

### Properties

Form	Liquid
Storage instructions	Shipped at 4°C. Store at +4°C. Do Not Freeze.

<b>Storage buffer</b>	pH: 7.2 Constituent: PBS
<b>Carrier free</b>	Yes
<b>Purity</b>	Protein A purified
<b>Clonality</b>	Monoclonal
<b>Clone number</b>	EP655Y
<b>Isotype</b>	IgG

## Applications

**The Abpromise guarantee** Our **Abpromise guarantee** covers the use of ab235117 in the following tested applications. The application notes include recommended starting dilutions; optimal dilutions/concentrations should be determined by the end user.

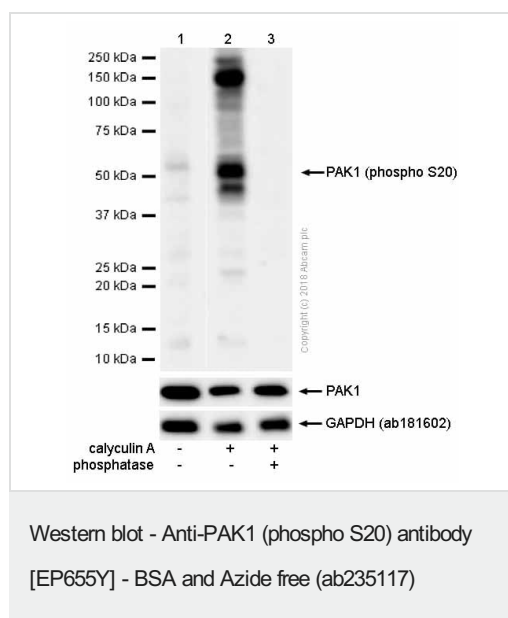
Application	Abreviews	Notes
WB		Use at an assay dependent concentration. Detects a band of approximately 61 kDa (predicted molecular weight: 61 kDa).

**Application notes** Is unsuitable for Flow Cyt, IHC-P or IP.

## Target

<b>Function</b>	The activated kinase acts on a variety of targets. Likely to be the GTPase effector that links the Rho-related GTPases to the JNK MAP kinase pathway. Activated by CDC42 and RAC1. Involved in dissolution of stress fibers and reorganization of focal complexes. Involved in regulation of microtubule biogenesis through phosphorylation of TBCB. Activity is inhibited in cells undergoing apoptosis, potentially due to binding of CDC2L1 and CDC2L2.
<b>Sequence similarities</b>	Belongs to the protein kinase superfamily. STE Ser/Thr protein kinase family. STE20 subfamily. Contains 1 CRIB domain. Contains 1 protein kinase domain.
<b>Post-translational modifications</b>	Autophosphorylated when activated by CDC42/p21 and RAC1.
<b>Cellular localization</b>	Cytoplasm. Cell junction > focal adhesion. Recruited to focal adhesions upon activation.

## Images



**All lanes :** Anti-PAK1 (phospho S20) antibody [EP655Y] ([ab51244](#)) at 1/1000 dilution

**Lane 1 :** HeLa (Human cervix adenocarcinoma epithelial cell) Whole cell lysates

**Lane 2 :** HeLa (Human cervix adenocarcinoma epithelial cell) treated with 100mM calyculin A for 30 minutes Whole cell lysates

**Lane 3 :** HeLa (Human cervix adenocarcinoma epithelial cell) treated with 100mM calyculin A for 30 minutes. Then the membrane was incubated with phosphatase.

Lysates/proteins at 15 µg per lane.

## Secondary

**All lanes :** Goat Anti-Rabbit IgG H&L (HRP) ([ab97051](#)) at 1/20000 dilution

**Predicted band size:** 61 kDa

**Exposure time:** 3 minutes

This data was developed using the same antibody clone in a different buffer formulation containing PBS, BSA, glycerol, and sodium azide ([ab51244](#)).

We are unable to define the extra bands.

Blocking buffer: 5% NFDM/TBST

### Why choose a recombinant antibody?



#### Research with confidence

Consistent and reproducible results



#### Long-term and scalable supply

Recombinant technology



#### Success from the first experiment

Confirmed specificity



#### Ethical standards compliant

Animal-free production

Anti-PAK1 (phospho S20) antibody [EP655Y] - BSA and Azide free (ab235117)

**Please note:** All products are "FOR RESEARCH USE ONLY. NOT FOR USE IN DIAGNOSTIC PROCEDURES"

### Our Abpromise to you: Quality guaranteed and expert technical support

---

- Replacement or refund for products not performing as stated on the datasheet
- Valid for 12 months from date of delivery
- Response to your inquiry within 24 hours
- We provide support in Chinese, English, French, German, Japanese and Spanish
- Extensive multi-media technical resources to help you
- We investigate all quality concerns to ensure our products perform to the highest standards

If the product does not perform as described on this datasheet, we will offer a refund or replacement. For full details of the Abpromise, please visit <https://www.abcam.com/abpromise> or contact our technical team.

### Terms and conditions

---

- Guarantee only valid for products bought direct from Abcam or one of our authorized distributors