


Product datasheet

Anti-PAK5 antibody ab110069

[10 References](#) [2 Images](#)

Overview

Product name	Anti-PAK5 antibody
Description	Rabbit polyclonal to PAK5
Host species	Rabbit
Tested applications	Suitable for: WB, IHC-P
Species reactivity	Reacts with: Rat, Human Predicted to work with: Mouse 
Immunogen	Synthetic peptide from the C terminal region of Human PAK5.
Positive control	Human brain tissue; Rat brain cells extracts
General notes	<p>The Life Science industry has been in the grips of a reproducibility crisis for a number of years. Abcam is leading the way in addressing this with our range of recombinant monoclonal antibodies and knockout edited cell lines for gold-standard validation. Please check that this product meets your needs before purchasing.</p> <p>If you have any questions, special requirements or concerns, please send us an inquiry and/or contact our Support team ahead of purchase. Recommended alternatives for this product can be found below, along with publications, customer reviews and Q&As</p>

Properties

Form	Liquid
Storage instructions	Shipped at 4°C. Store at -20°C. Stable for 12 months at -20°C.
Storage buffer	pH: 7.40 Preservative: 0.02% Sodium azide Constituents: PBS, 50% Glycerol (glycerin, glycerine), 0.88% Sodium chloride
Purity	Immunogen affinity purified
Purification notes	ab110069 was affinity-purified from rabbit antiserum by affinity-chromatography using epitope-specific immunogen.
Clonality	Polyclonal
Isotype	IgG

Applications

Applications

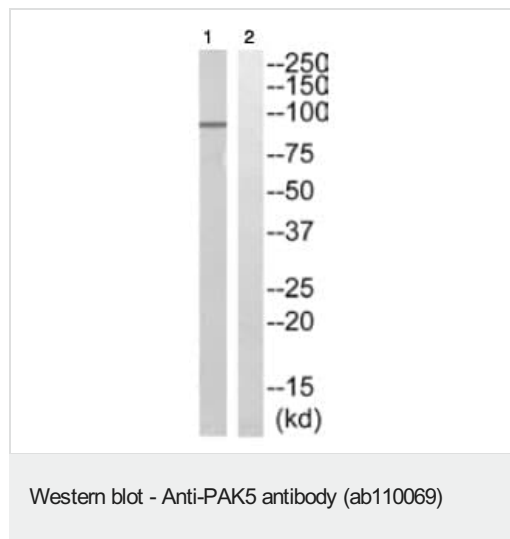
The Abpromise guarantee Our **Abpromise guarantee** covers the use of ab110069 in the following tested applications. The application notes include recommended starting dilutions; optimal dilutions/concentrations should be determined by the end user.

Application	Abreviews	Notes
WB		1/500 - 1/1000. Predicted molecular weight: 81 kDa.
IHC-P		1/50 - 1/100. Perform heat mediated antigen retrieval with citrate buffer pH 6 before commencing with IHC staining protocol.

Target

Function	The activated kinase acts on a variety of targets.
Tissue specificity	Predominantly expressed in brain.
Sequence similarities	Belongs to the protein kinase superfamily. STE Ser/Thr protein kinase family. STE20 subfamily. Contains 1 CRIB domain. Contains 1 protein kinase domain.
Post-translational modifications	Autophosphorylated when activated by CDC42/p21.

Images



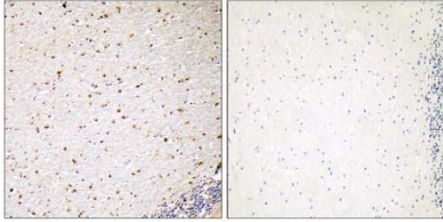
All lanes : Anti-PAK5 antibody (ab110069) at 1/500 dilution

Lane 1 : extracts from Rat brain cells

Lane 2 : extracts from Rat brain cells with immunizing peptide at 10 μ g

Lysates/proteins at 30 μ g per lane.

Predicted band size: 81 kDa



Immunohistochemical analysis of paraffin embedded Human brain tissue, using a 1/50 dilution of ab110069 with (right) or without (left) the immunizing peptide.

Immunohistochemistry (Formalin/PFA-fixed paraffin-embedded sections) - Anti-PAK5 antibody (ab110069)

Please note: All products are "FOR RESEARCH USE ONLY. NOT FOR USE IN DIAGNOSTIC PROCEDURES"

Our Abpromise to you: Quality guaranteed and expert technical support

- Replacement or refund for products not performing as stated on the datasheet
- Valid for 12 months from date of delivery
- Response to your inquiry within 24 hours
- We provide support in Chinese, English, French, German, Japanese and Spanish
- Extensive multi-media technical resources to help you
- We investigate all quality concerns to ensure our products perform to the highest standards

If the product does not perform as described on this datasheet, we will offer a refund or replacement. For full details of the Abpromise, please visit <https://www.abcam.com/abpromise> or contact our technical team.

Terms and conditions

- Guarantee only valid for products bought direct from Abcam or one of our authorized distributors