



Product datasheet

Anti-pan Actin Antibody [4A4] ab119952

[26 References](#) [5 Images](#)

Overview

Product name	Anti-pan Actin Antibody [4A4]
Description	Mouse monoclonal [4A4] to pan Actin
Host species	Mouse
Specificity	Actin proteins have very high homology. The immunogen for this product is based on the ACTA2 protein but this product will also detect Gamma actin, and likely other actin family members too.
Tested applications	Suitable for: WB, ELISA, IHC-P, Flow Cyt Unsuitable for: ICC/IF
Species reactivity	Reacts with: Mouse, Rat, Human, African green monkey
Immunogen	Synthetic peptide corresponding to Human pan Actin aa 350 to the C-terminus conjugated to keyhole limpet haemocyanin.  Run BLAST with Expasy  Run BLAST with NCBI
Positive control	Recombinant alpha smooth muscle Actin protein, Hela, A431, Jurkat, K562, HEK293, HepG2, NIH3T3, PC12 and COS7 cell lysates, HepG2 cells, HeLa cells
General notes	<p>The Life Science industry has been in the grips of a reproducibility crisis for a number of years. Abcam is leading the way in addressing this with our range of recombinant monoclonal antibodies and knockout edited cell lines for gold-standard validation. Please check that this product meets your needs before purchasing.</p> <p>If you have any questions, special requirements or concerns, please send us an inquiry and/or contact our Support team ahead of purchase. Recommended alternatives for this product can be found below, along with publications, customer reviews and Q&As</p>

Properties

Form	Liquid
Storage instructions	Shipped at 4°C. Store at +4°C short term (1-2 weeks). Store at -20°C long term.
Storage buffer	Preservative: 0.05% Sodium azide Constituent: PBS
Purity	Protein G purified
Purification notes	Purified from tissue culture supernatant.
Clonality	Monoclonal

Clone number	4A4
Isotype	IgG1

Applications

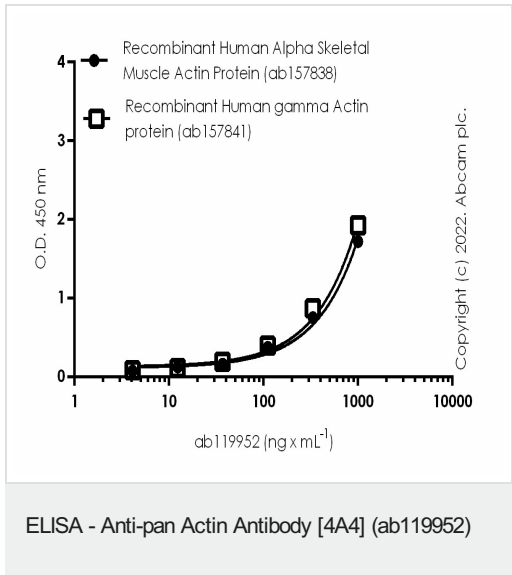
The Abpromise guarantee Our **Abpromise guarantee** covers the use of ab119952 in the following tested applications. The application notes include recommended starting dilutions; optimal dilutions/concentrations should be determined by the end user.

Application	Abreviews	Notes
WB		1/500 - 1/2000. Detects a band of approximately 42 kDa (predicted molecular weight: 42 kDa).
ELISA		1/10000.
IHC-P		1/200 - 1/1000.
Flow Cyt		1/200 - 1/400. ab170190 - Mouse monoclonal IgG1, is suitable for use as an isotype control with this antibody.

Application notes Is unsuitable for ICC/IF.

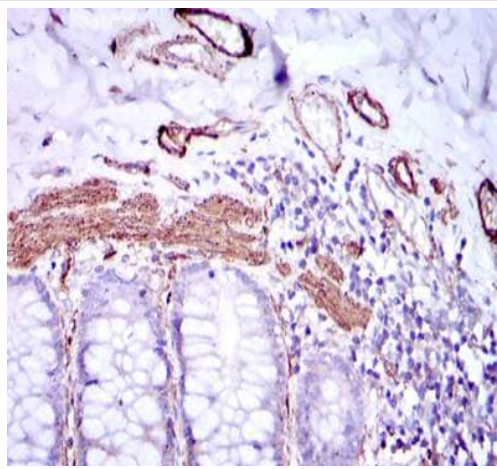
Target

Images



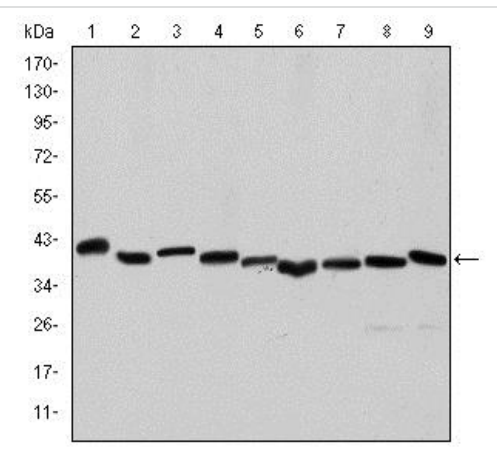
1 ug per mL of recombinant protein **ab157838** and **ab157841** were immobilised in PBS on an ELISA plate overnight. After blocking in 5% BSA, primary antibody (**ab119952**) was added in a concentration range of 0.017-1000 ng per mL.

Pre-absorbed secondary antibody goat anti-rabbit IgG H&L (HRP, **ab97080**) was used at 1/20000 dilution.



Immunohistochemical analysis of paraffin-embedded Human duodenum tissue using ab119952 at a dilution of 1/200 with DAB staining.

Immunohistochemistry (Formalin/PFA-fixed paraffin-embedded sections) - Anti-pan Actin Antibody [4A4] (ab119952)



Western blot - Anti-pan Actin Antibody [4A4] (ab119952)

All lanes : Anti-pan Actin Antibody [4A4] (ab119952) at 1/500 dilution

Lane 1 : HeLa cell lysate

Lane 2 : A431 cell lysate

Lane 3 : Jurkat cell lysate

Lane 4 : K562 cell lysate

Lane 5 : HEK293 cell lysate

Lane 6 : HepG2 cell lysate

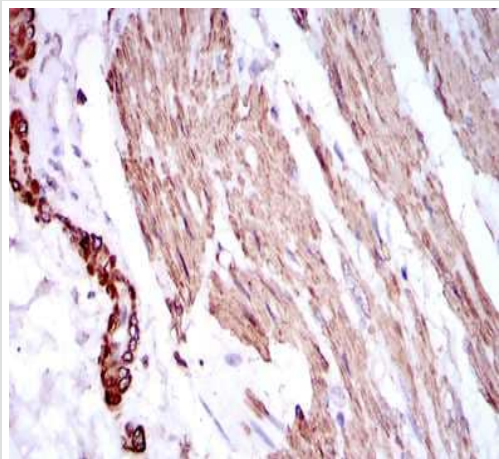
Lane 7 : NIH3T3 cell lysate

Lane 8 : PC12 cell lysate

Lane 9 : COS-7 (African green monkey kidney fibroblast-like cell line) cell lysate

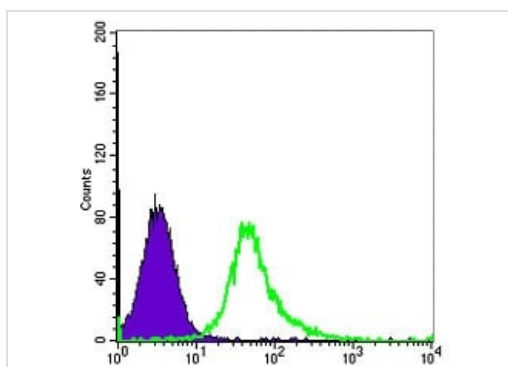
Predicted band size: 42 kDa

Observed band size: 42 kDa



Immunohistochemical analysis of paraffin-embedded Human esophagus tissue using ab119952 at a dilution of 1/200 with DAB staining.

Immunohistochemistry (Formalin/PFA-fixed paraffin-embedded sections) - Anti-pan Actin Antibody [4A4] (ab119952)



Flow cytometric analysis of HeLa cells using ab119952 at a dilution of 1/200 (green) and negative control (purple).

Flow Cytometry - Anti-pan Actin Antibody [4A4] (ab119952)

Please note: All products are "FOR RESEARCH USE ONLY. NOT FOR USE IN DIAGNOSTIC PROCEDURES"

Our Abpromise to you: Quality guaranteed and expert technical support

- Replacement or refund for products not performing as stated on the datasheet
- Valid for 12 months from date of delivery
- Response to your inquiry within 24 hours
- We provide support in Chinese, English, French, German, Japanese and Spanish
- Extensive multi-media technical resources to help you

- We investigate all quality concerns to ensure our products perform to the highest standards

If the product does not perform as described on this datasheet, we will offer a refund or replacement. For full details of the Abpromise, please visit <https://www.abcam.com/abpromise> or contact our technical team.

Terms and conditions

- Guarantee only valid for products bought direct from Abcam or one of our authorized distributors