


## Product datasheet

### Anti-pan Cytokeratin antibody [PCK-26] ab6401

★★★★★ [20 Abreviews](#) [43 References](#) [2 Images](#)

#### Overview

<b>Product name</b>	Anti-pan Cytokeratin antibody [PCK-26]
<b>Description</b>	Mouse monoclonal [PCK-26] to pan Cytokeratin
<b>Host species</b>	Mouse
<b>Tested applications</b>	<b>Suitable for:</b> WB
<b>Species reactivity</b>	<b>Reacts with:</b> Human <b>Predicted to work with:</b> Rat, Rabbit, Goat, Chicken, Cow, a wide range of other species 
<b>Immunogen</b>	Full length native protein (purified) corresponding to Human pan Cytokeratin.
<b>General notes</b>	<p>This product was changed from ascites to tissue culture supernatant on 17 May 2019. Please note that the dilutions may need to be adjusted accordingly. If you have any questions, please do not hesitate to contact our scientific support team.</p> <p>The Life Science industry has been in the grips of a reproducibility crisis for a number of years. Abcam is leading the way in addressing this with our range of recombinant monoclonal antibodies and knockout edited cell lines for gold-standard validation. Please check that this product meets your needs before purchasing.</p> <p>If you have any questions, special requirements or concerns, please send us an inquiry and/or contact our Support team ahead of purchase. Recommended alternatives for this product can be found below, along with publications, customer reviews and Q&amp;As</p>

#### Properties

<b>Form</b>	Liquid
<b>Storage instructions</b>	Shipped at 4°C. Store at +4°C short term (1-2 weeks). Upon delivery aliquot. Store at -20°C or -80°C. Avoid freeze / thaw cycle.
<b>Storage buffer</b>	pH: 7.40 Preservative: 0.097% Sodium azide Constituent: PBS
<b>Purity</b>	Tissue culture supernatant
<b>Purification notes</b>	Purified from TCS.
<b>Clonality</b>	Monoclonal
<b>Clone number</b>	PCK-26

<b>Myeloma</b>	unknown
<b>Isotype</b>	IgG1
<b>Light chain type</b>	unknown

## Applications

**The Abpromise guarantee** Our **Abpromise guarantee** covers the use of ab6401 in the following tested applications. The application notes include recommended starting dilutions; optimal dilutions/concentrations should be determined by the end user.

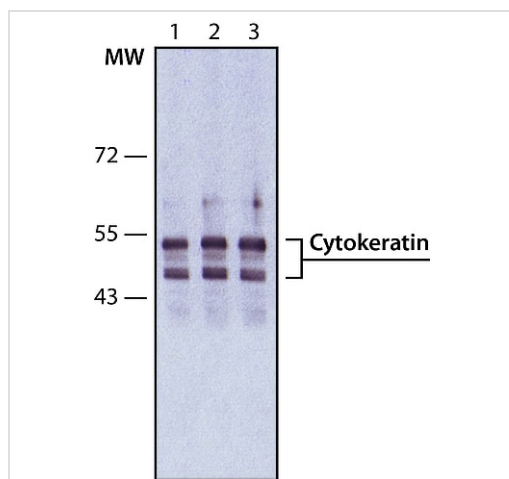
Application	Abreviews	Notes
WB	★★★★★ (5)	Use at an assay dependent concentration.

## Target

**Relevance** Cytokeratins, a group comprising at least 29 different proteins, are characteristic of epithelial and trichocytic cells. Cytokeratins 1, 4, 5, 6, and 8 are members of the type II neutral to basic subfamily. Monoclonal anti cytokeratins are specific markers of epithelial cell differentiation and have been widely used as tools in tumor identification and classification. Monoclonal Anti Pan Cytokeratin is a broadly reactive reagent, which recognizes epitopes present in most human epithelial tissues. It facilitates typing of normal, metaplastic and neoplastic cells. Synergy between the various components results in staining amplification. This enables identification of cells, which would otherwise be stained only marginally. The mixture may aid in the discrimination of carcinomas and nonepithelial tumors such as sarcomas, lymphomas and neural tumors. It is also useful in detecting micrometastases in lymph nodes, bone marrow and other tissues and for determining the origin of poorly differentiated tumors. There are two types of cytokeratins the acidic type I cytokeratins and the basic or neutral type II cytokeratins. Cytokeratins are usually found in pairs comprising a type I cytokeratin and a type II cytokeratin. Usually the type II cytokeratins are 8kD larger than their type I counterparts.

**Cellular localization** Cytoplasmic

## Images



Western blot - Anti-pan Cytokeratin antibody [PCK-26] (ab6401)

**Lane 1 :** Anti-pan Cytokeratin antibody [PCK-26] (ab6401) at 2.5 µg/ml

**Lane 2 :** Anti-pan Cytokeratin antibody [PCK-26] (ab6401) at 5 µg/ml

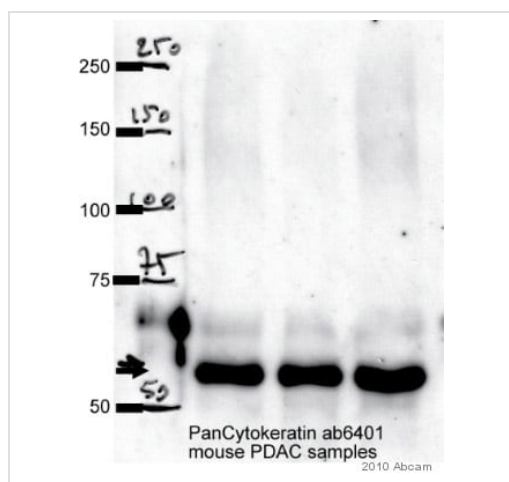
**Lane 3 :** Anti-pan Cytokeratin antibody [PCK-26] (ab6401) at 10 µg/ml

**All lanes :** HeLa cell lysate

#### Secondary

**All lanes :** Peroxidase-conjugated goat anti-mouse IgG

This image was generated using the ascites version of the product.



Western blot - Anti-pan Cytokeratin antibody [PCK-26] (ab6401)

This image is courtesy of an Abreview submitted by Pawel Mazur

**All lanes:** pan Cytokeratin antibody (ab6401) at 1/1000 dilution + whole cell lysate of Primary mouse pancreatic cancer cell lines (35 µg)

**Secondary:** An HRP-conjugated Sheep anti-mouse IgG polyclonal (1/5000) developed using the ECL technique

Performed under non-reducing conditions.

**Blocking Step:** 10% Milk for 1 hour at room temperature

This image was generated using the ascites version of the product.

**Please note:** All products are "FOR RESEARCH USE ONLY. NOT FOR USE IN DIAGNOSTIC PROCEDURES"

### Our Abpromise to you: Quality guaranteed and expert technical support

- Replacement or refund for products not performing as stated on the datasheet
- Valid for 12 months from date of delivery
- Response to your inquiry within 24 hours
- We provide support in Chinese, English, French, German, Japanese and Spanish
- Extensive multi-media technical resources to help you
- We investigate all quality concerns to ensure our products perform to the highest standards

If the product does not perform as described on this datasheet, we will offer a refund or replacement. For full details of the Abpromise, please visit <https://www.abcam.com/abpromise> or contact our technical team.

## Terms and conditions

---

- Guarantee only valid for products bought direct from Abcam or one of our authorized distributors