

## Product datasheet

# Anti-Pancreatic Lipase/PTL antibody [EPR6275] ab133556

Recombinant RabMAb

4 Images

### Overview

|                            |  |
|----------------------------|--|
| <b>Product name</b>        | Anti-Pancreatic Lipase/PTL antibody [EPR6275]  |
| <b>Description</b>         | Rabbit monoclonal [EPR6275] to Pancreatic Lipase/PTL   |
| <b>Host species</b>        | Rabbit   |
| <b>Tested applications</b> | <b>Suitable for:</b> WB, IHC-P<br><b>Unsuitable for:</b> IP  |
| <b>Species reactivity</b>  | <b>Reacts with:</b> Human  |
| <b>Immunogen</b>           | Synthetic peptide. This information is proprietary to Abcam and/or its suppliers.  |
| <b>Positive control</b>    | Human pancreas lysate, Human pancreas tissue   |
| <b>General notes</b>       | <p>This product is a recombinant monoclonal antibody, which offers several advantages including:</p> <ul style="list-style-type: none"> <li>- High batch-to-batch consistency and reproducibility</li> <li>- Improved sensitivity and specificity</li> <li>- Long-term security of supply</li> <li>- Animal-free production</li> </ul> <p>For more information <a href="#">see here</a>.</p> <p>Our RabMAb<sup>®</sup> technology is a patented hybridoma-based technology for making rabbit monoclonal antibodies. For details on our patents, please refer to <a href="#">RabMAb<sup>®</sup> patents</a>.</p> <p>Mouse, Rat: We have preliminary internal testing data to indicate this antibody may not react with these species. Please contact us for more information.</p> |

### Properties

|                             |  |
|-----------------------------|--|
| <b>Form</b>                 | Liquid   |
| <b>Storage instructions</b> | Shipped at 4°C. Store at -20°C. Stable for 12 months at -20°C.   |
| <b>Storage buffer</b>       | <p>pH: 7.2</p> <p>Preservative: 0.05% Sodium azide</p> <p>Constituents: 40% Glycerol (glycerin, glycerine), 9.85% Tris glycine, 50% Tissue culture supernatant</p> |
| <b>Purity</b>               | Protein A purified   |

|                     |            |
|---------------------|------------|
| <b>Clonality</b>    | Monoclonal |
| <b>Clone number</b> | EPR6275    |
| <b>Isotype</b>      | IgG        |

## Applications

**The Abpromise guarantee** Our **Abpromise guarantee** covers the use of ab133556 in the following tested applications. The application notes include recommended starting dilutions; optimal dilutions/concentrations should be determined by the end user.

| Application  | Abreviews | Notes   |
|--------------|-----------|---|
| <b>WB</b>    |           | 1/10000 - 1/50000. Detects a band of approximately 49 kDa (predicted molecular weight: 51 kDa).                               |
| <b>IHC-P</b> |           | 1/100 - 1/250. Perform heat mediated antigen retrieval with citrate buffer pH 6 before commencing with IHC staining protocol. |

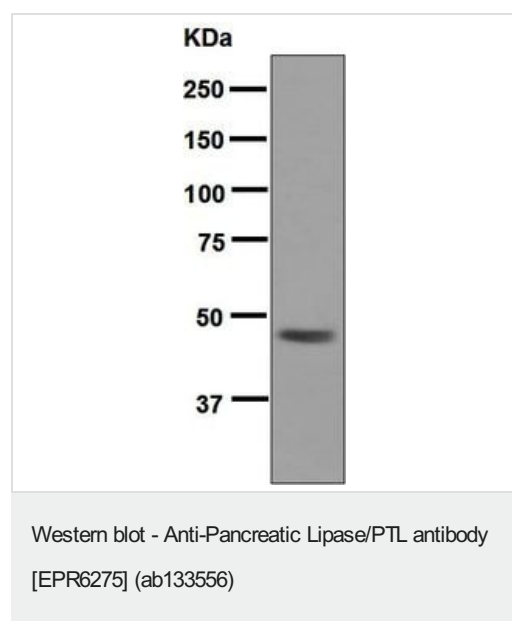
**Application notes** Is unsuitable for IP.

## Target

**Sequence similarities** Belongs to the AB hydrolase superfamily. Lipase family.  
Contains 1 PLAT domain.

**Cellular localization** Secreted.

## Images



Anti-Pancreatic Lipase/PTL antibody [EPR6275] (ab133556) at 1/10000 dilution + Human pancreas lysate at 10 µg

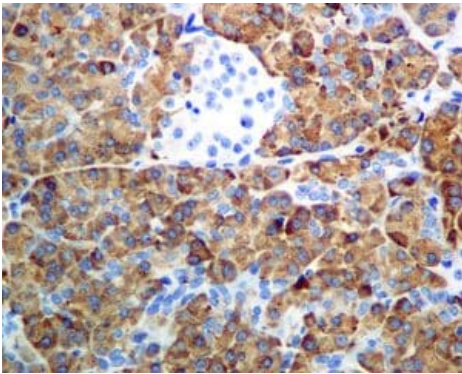
### Secondary

HRP labelled goat anti-rabbit at 1/2000 dilution

**Predicted band size:** 51 kDa

**Observed band size:** 49 kDa

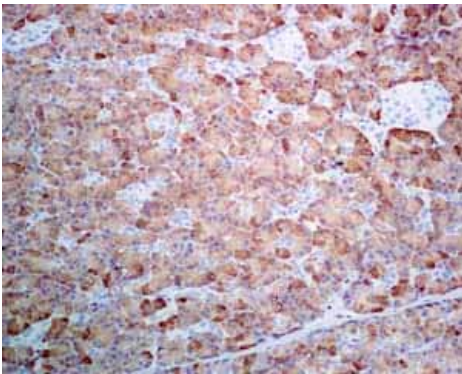
ab133556 showing negative staining in Normal brain tissue.



Immunohistochemistry (Formalin/PFA-fixed paraffin-embedded sections) - Anti-Pancreatic Lipase/PTL antibody [EPR6275] (ab133556)

Immunohistochemical analysis of paraffin embedded Human pancreas tissue labelling Pancreatic Lipase/PTL with ab133556 antibody at a dilution of 1/100.

Perform heat mediated antigen retrieval with citrate buffer pH 6 before commencing with IHC staining protocol.



Immunohistochemistry (Formalin/PFA-fixed paraffin-embedded sections) - Anti-Pancreatic Lipase/PTL antibody [EPR6275] (ab133556)

ab133556 showing positive staining in Normal pancreas tissue.

Perform heat mediated antigen retrieval with citrate buffer pH 6 before commencing with IHC staining protocol.

### Why choose a recombinant antibody?



**Research with confidence**  
Consistent and reproducible results



**Long-term and scalable supply**  
Recombinant technology



**Success from the first experiment**  
Confirmed specificity



**Ethical standards compliant**  
Animal-free production

Anti-Pancreatic Lipase/PTL antibody [EPR6275]  
(ab133556)

**Please note:** All products are "FOR RESEARCH USE ONLY. NOT FOR USE IN DIAGNOSTIC PROCEDURES"

### **Our Abpromise to you: Quality guaranteed and expert technical support**

---

- Replacement or refund for products not performing as stated on the datasheet
- Valid for 12 months from date of delivery
- Response to your inquiry within 24 hours
- We provide support in Chinese, English, French, German, Japanese and Spanish
- Extensive multi-media technical resources to help you
- We investigate all quality concerns to ensure our products perform to the highest standards

If the product does not perform as described on this datasheet, we will offer a refund or replacement. For full details of the Abpromise, please visit <https://www.abcam.com/abpromise> or contact our technical team.

### **Terms and conditions**

---

- Guarantee only valid for products bought direct from Abcam or one of our authorized distributors