




Product datasheet

Anti-Pancreatic Polypeptide antibody ab77192

★★★★★ [3 Abreviews](#) [20 References](#) [2 Images](#)

Overview

Product name	Anti-Pancreatic Polypeptide antibody
Description	Goat polyclonal to Pancreatic Polypeptide
Host species	Goat
Tested applications	Suitable for: IHC-P, ELISA, ICC/IF, WB, Flow Cyt (Intra)
Species reactivity	Reacts with: Mouse, Human Predicted to work with: Rat, Dog, Chimpanzee, Macaque monkey 
Immunogen	Synthetic peptide corresponding to Human Pancreatic Polypeptide aa 61-73 (internal sequence). Sequence: TRPRYGKRHKEDT Database link: P01298 <div>  Run BLAST with  Run BLAST with </div>
Positive control	IHC-P: Human pancreas tissue. Flow Cyt (intra): U2OS cells.
General notes	<p>The Life Science industry has been in the grips of a reproducibility crisis for a number of years. Abcam is leading the way in addressing this with our range of recombinant monoclonal antibodies and knockout edited cell lines for gold-standard validation. Please check that this product meets your needs before purchasing.</p> <p>If you have any questions, special requirements or concerns, please send us an inquiry and/or contact our Support team ahead of purchase. Recommended alternatives for this product can be found below, along with publications, customer reviews and Q&As</p>

Properties

Form	Liquid
Storage instructions	Shipped at 4°C. Upon delivery aliquot and store at -20°C or -80°C. Avoid repeated freeze / thaw cycles.
Storage buffer	pH: 7.30 Preservative: 0.02% Sodium azide Constituents: 0.5% BSA, Tris buffered saline
Purity	Immunogen affinity purified
Purification notes	Purified from goat serum by ammonium sulphate precipitation followed by antigen affinity

chromatography using the immunizing peptide.

Clonality

Polyclonal

Isotype

IgG

Applications

The Abpromise guarantee

Our **Abpromise guarantee** covers the use of ab77192 in the following tested applications.

The application notes include recommended starting dilutions; optimal dilutions/concentrations should be determined by the end user.

Application	Abreviews	Notes
IHC-P	★★★★☆ (2)	Use a concentration of 3 - 5 µg/ml. Perform heat mediated antigen retrieval via the microwave method before commencing with IHC staining protocol. In paraffin embedded human pancreas, shows strong cytoplasmic staining of rare cells located at the periphery of islets of Langerhans.
ELISA		Use at an assay dependent concentration. Antibody detection limit dilution 1:32,000 by peptide ELISA.
ICC/IF	★★★★☆ (1)	Use at an assay dependent concentration. See Abreview.
WB		Use at an assay dependent concentration. Predicted molecular weight: 10 kDa. Preliminary experiments gave an approx 35-38 kDa band in human pancreas lysate, which was successfully blocked by incubation with the immunizing peptide. Please note that currently we cannot find an explanation in the literature for the band we observe given the calculated size of 10.5 kDa.
Flow Cyt (Intra)		Use a concentration of 10 µg/ml.

Target

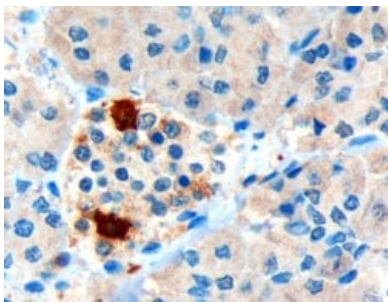
Relevance

Pancreatic hormone is synthesized in pancreatic islets of Langerhans and acts as a regulator of pancreatic and gastrointestinal functions and may be important in the regulation of food intake. Plasma levels of this hormone have been shown to be reduced in conditions associated with increased food intake and elevated in anorexia nervosa. In addition, infusion of this hormone in obese rodents has shown to decrease weight gain.

Cellular localization

Secreted

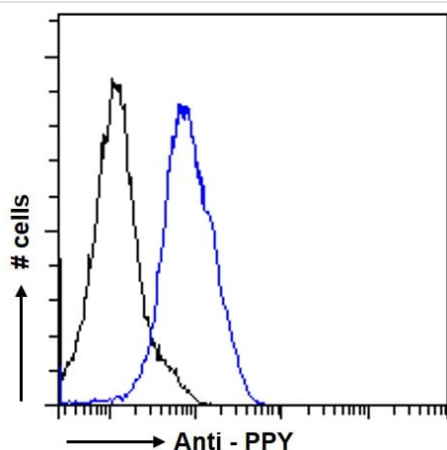
Images



Immunohistochemistry (Formalin/PFA-fixed paraffin-embedded sections) - Anti-Pancreatic Polypeptide antibody (ab77192)

Staining of formalin-fixed, paraffin-embedded human pancreas tissue with 3µg/ml ab77192. Note strong cytoplasmic staining of rare cells located at the periphery of islets of Langerhans.

Microwaved antigen retrieval with Tris/EDTA buffer pH6, HRP-staining.



Flow Cytometry (Intracellular) - Anti-Pancreatic Polypeptide antibody (ab77192)

Flow cytometric analysis of paraformaldehyde fixed U2OS cells (blue line), permeabilized with 0.5% Triton. Primary incubation 1hr (10ug/ml) followed by Alexa Fluor 488 secondary antibody (1ug/ml). IgG control: Unimmunized goat IgG (black line) followed by Alexa Fluor 488 secondary antibody.

Please note: All products are "FOR RESEARCH USE ONLY. NOT FOR USE IN DIAGNOSTIC PROCEDURES"

Our Abpromise to you: Quality guaranteed and expert technical support

- Replacement or refund for products not performing as stated on the datasheet
- Valid for 12 months from date of delivery
- Response to your inquiry within 24 hours
- We provide support in Chinese, English, French, German, Japanese and Spanish
- Extensive multi-media technical resources to help you
- We investigate all quality concerns to ensure our products perform to the highest standards

If the product does not perform as described on this datasheet, we will offer a refund or replacement. For full details of the Abpromise, please visit <https://www.abcam.com/abpromise> or contact our technical team.

Terms and conditions

- Guarantee only valid for products bought direct from Abcam or one of our authorized distributors