

Product datasheet

Anti-Pancreatic Polypeptide antibody [EPR22853-61] ab255827

Recombinant RabMAb

[1 References](#) [6 Images](#)

Overview

Product name	Anti-Pancreatic Polypeptide antibody [EPR22853-61]
Description	Rabbit monoclonal [EPR22853-61] to Pancreatic Polypeptide
Host species	Rabbit
Tested applications	Suitable for: IHC-P, IHC-Fr, mIHC Unsuitable for: IP or WB
Species reactivity	Reacts with: Mouse, Rat
Immunogen	Recombinant fragment. This information is proprietary to Abcam and/or its suppliers.
Positive control	IHC-P: Mouse pancreas tissue; rat pancreas tissue. IHC-Fr: Mouse pancreas tissue; rat pancreas tissue. mIHC: Rat pancreas tissue.
General notes	<p>This product is a recombinant monoclonal antibody, which offers several advantages including:</p> <ul style="list-style-type: none">- High batch-to-batch consistency and reproducibility- Improved sensitivity and specificity- Long-term security of supply- Animal-free production <p>For more information see here.</p> <p>Our RabMAb[®] technology is a patented hybridoma-based technology for making rabbit monoclonal antibodies. For details on our patents, please refer to RabMAb[®] patents.</p>

Properties

Form	Liquid
Storage instructions	Shipped at 4°C. Store at +4°C short term (1-2 weeks). Upon delivery aliquot. Store at -20°C long term. Avoid freeze / thaw cycle.
Storage buffer	pH: 7.2 Preservative: 0.01% Sodium azide Constituents: PBS, 40% Glycerol (glycerin, glycerine), 0.05% BSA
Purity	Protein A purified
Clonality	Monoclonal

Clone number EPR22853-61

Isotype IgG

Applications

The Abpromise guarantee Our **Abpromise guarantee** covers the use of ab255827 in the following tested applications.

The application notes include recommended starting dilutions; optimal dilutions/concentrations should be determined by the end user.

Application	Abreviews	Notes
IHC-P		1/5000. Perform heat mediated antigen retrieval with Tris/EDTA buffer pH 9.0 before commencing with IHC staining protocol.
IHC-Fr		1/500. Heat mediated antigen retrieval using sodium citrate buffer (10mM citrate pH 6.0 + 0.05% Tween-20).
mIHC		1/20000.

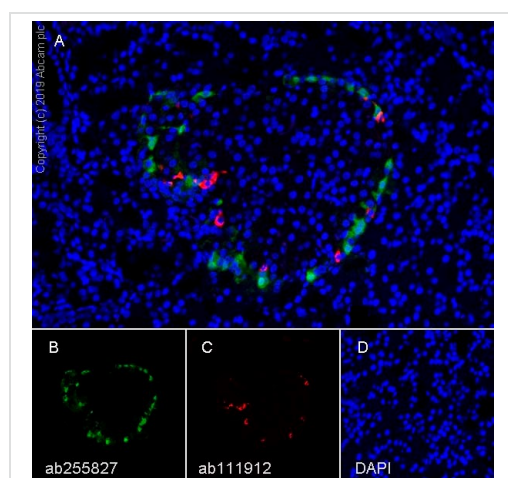
Application notes Is unsuitable for IP or WB.

Target

Relevance Pancreatic hormone is synthesized in pancreatic islets of Langerhans and acts as a regulator of pancreatic and gastrointestinal functions and may be important in the regulation of food intake. Plasma levels of this hormone have been shown to be reduced in conditions associated with increased food intake and elevated in anorexia nervosa. In addition, infusion of this hormone in obese rodents has shown to decrease weight gain.

Cellular localization Secreted

Images



Multiplex immunohistochemistry (Formalin/PFA-fixed paraffin-embedded sections) analysis of rat pancreas tissue.

Panel A: Merged staining of anti-Pancreatic Polypeptide (ab255827, green), anti-Somatostatin 28 (**ab111912**, red) and DAPI (blue).

Panel B: Anti-Pancreatic Polypeptide (green) stained on PP cells in rat pancreas islet.

Panel C: Anti-Somatostatin 28 (red) stained on delta cells in rat pancreas islet.

Panel D: Nuclear counter stain, DAPI (blue).

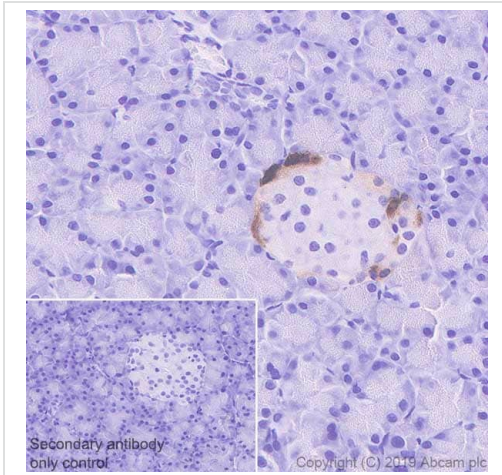
Multiplex immunohistochemistry - Anti-Pancreatic Polypeptide antibody [EPR22853-61] (ab255827)

Key protocol steps: The section was incubated in two rounds of staining with ab255827 (1/20000 dilution) and **ab111912** (1/2000

dilution) for 30 mins at room temperature. Each round was followed by tyramide signal amplification with the appropriate fluorophore. Heat mediated antigen retrieval was used (Tris-EDTA buffer (pH 9.0, epitope retrieval solution 2) for 20 mins after every round of antibody/fluorophore staining.

The immunostaining was performed on a Leica Biosystems BOND® RX instrument.

A ready-to-use anti-Rabbit and Mouse Polymer HRP was used as a secondary.



Immunohistochemistry (Formalin/PFA-fixed paraffin-embedded sections) - Anti-Pancreatic Polypeptide antibody [EPR22853-61] (ab255827)

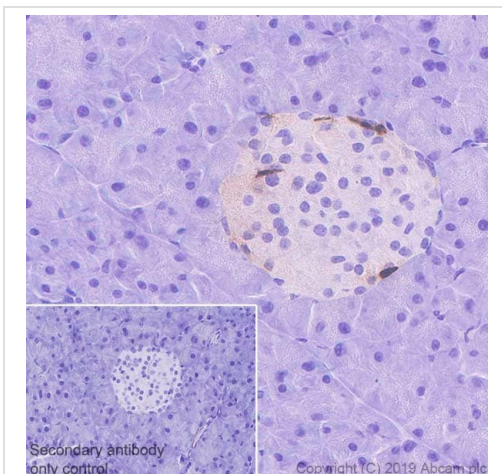
Immunohistochemical analysis of paraffin-embedded rat pancreas tissue labeling Pancreatic Polypeptide with ab255827 at 1/5000 dilution, followed by ready to use Rabbit specific IHC polymer detection kit HRP/DAB (**ab209101**). Positive staining on PP cells in rat pancreas islet (PMID: 27270601) is observed. Counter stained with hematoxylin.

Secondary antibody only control: Used PBS instead of primary antibody, secondary antibody is Rabbit specific IHC polymer detection kit HRP/DAB (**ab209101**).

Heat mediated antigen retrieval with Tris-EDTA buffer (pH 9.0, epitope retrieval solution 2) for 20 mins.

The section was incubated with ab255827 for 10 mins at RT.

The immunostaining was performed on a Leica Biosystems BOND® RX instrument.



Immunohistochemistry (Formalin/PFA-fixed paraffin-embedded sections) - Anti-Pancreatic Polypeptide antibody [EPR22853-61] (ab255827)

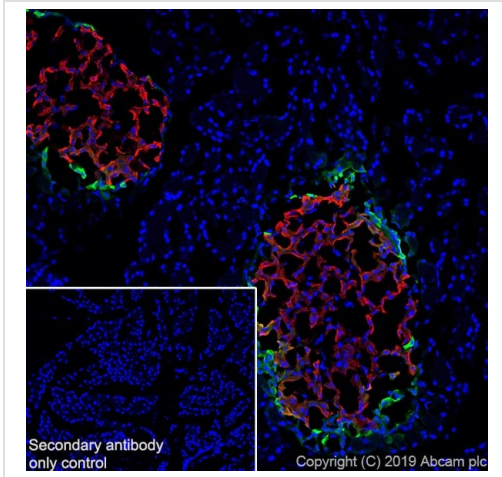
Immunohistochemical analysis of paraffin-embedded mouse pancreas tissue labeling Pancreatic Polypeptide with ab255827 at 1/5000 dilution, followed by ready to use Rabbit specific IHC polymer detection kit HRP/DAB (**ab209101**). Positive staining on PP cells in mouse pancreas islet (PMID: 27270601) is observed. Counter stained with hematoxylin.

Secondary antibody only control: Used PBS instead of primary antibody, secondary antibody is Rabbit specific IHC polymer detection kit HRP/DAB (**ab209101**).

Heat mediated antigen retrieval with Tris-EDTA buffer (pH 9.0, epitope retrieval solution 2) for 20 mins.

The section was incubated with ab255827 for 10 mins at RT.

The immunostaining was performed on a Leica Biosystems BOND® RX instrument.

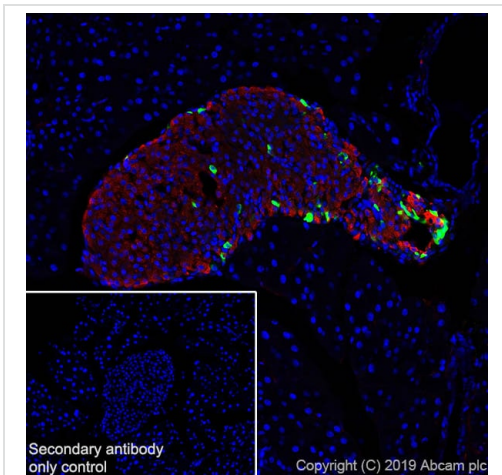


Immunohistochemistry (Frozen sections) - Anti-Pancreatic Polypeptide antibody [EPR22853-61] (ab255827)

Immunohistochemical analysis of frozen section of 4%PFA-fixed, 0.2% Triton X-100 permeabilized rat pancreas tissue labeling Pancreatic Polypeptide with ab255827 at 1/500 dilution, followed by Goat Anti-Rabbit IgG H&L (Alexa Fluor® 488) (**ab150077**) secondary antibody at 1/1000 dilution (green). ab255827 and **ab6995** are shown to stain PP cells and beta cells of rat pancreatic islets respectively (PMID: 24825414). The nuclear counter stain is DAPI (blue). Insulin is detected using **ab6995**, followed by Goat Anti-Mouse IgG H&L (Alexa Fluor® 594) preadsorbed (**ab150120**) at 1/1000 dilution (red).

Secondary antibody only control: Used PBS instead of primary antibody, secondary antibody is Goat Anti-Rabbit IgG H&L (Alexa Fluor® 488) (**ab150077**) secondary antibody at 1/1000 dilution.

Heat mediated antigen retrieval using sodium citrate buffer (10mM citrate pH 6.0 + 0.05% Tween-20).



Immunohistochemistry (Frozen sections) - Anti-Pancreatic Polypeptide antibody [EPR22853-61] (ab255827)

Immunohistochemical analysis of frozen section of 4% PFA-fixed, 0.2% Triton X-100 permeabilized mouse pancreas tissue labeling Pancreatic Polypeptide with ab255827 at 1/500 dilution, followed by Goat Anti-Rabbit IgG H&L (Alexa Fluor® 488) (**ab150077**) secondary antibody at 1/1000 dilution (green). ab255827 and **ab6995** are shown to stain PP cells and beta cells of mouse pancreatic islet respectively (PMID: 24825414). The nuclear counter stain is DAPI (blue). Insulin is detected using **ab6995**, followed by Goat Anti-Mouse IgG H&L (Alexa Fluor® 594) preadsorbed (**ab150120**) at 1/1000 dilution (red).

Secondary antibody only control: Used PBS instead of primary antibody, secondary antibody is Goat Anti-Rabbit IgG H&L (Alexa Fluor® 488) (**ab150077**) secondary antibody at 1/1000 dilution.

Heat mediated antigen retrieval using sodium citrate buffer (10mM citrate pH 6.0 + 0.05% Tween-20).

Why choose a recombinant antibody?



Research with confidence
Consistent and reproducible results



Long-term and scalable supply
Recombinant technology



Success from the first experiment
Confirmed specificity



Ethical standards compliant
Animal-free production

Anti-Pancreatic Polypeptide antibody [EPR22853-61] (ab255827)

Please note: All products are "FOR RESEARCH USE ONLY. NOT FOR USE IN DIAGNOSTIC PROCEDURES"

Our Abpromise to you: Quality guaranteed and expert technical support

- Replacement or refund for products not performing as stated on the datasheet
- Valid for 12 months from date of delivery
- Response to your inquiry within 24 hours
- We provide support in Chinese, English, French, German, Japanese and Spanish
- Extensive multi-media technical resources to help you
- We investigate all quality concerns to ensure our products perform to the highest standards

If the product does not perform as described on this datasheet, we will offer a refund or replacement. For full details of the Abpromise, please visit <https://www.abcam.com/abpromise> or contact our technical team.

Terms and conditions

- Guarantee only valid for products bought direct from Abcam or one of our authorized distributors