

Anti-PANDER antibody ab103154

[1 References](#) [2 Images](#)

Overview

Product name	Anti-PANDER antibody
Description	Rabbit polyclonal to PANDER
Host species	Rabbit
Tested applications	Suitable for: WB
Species reactivity	Reacts with: Mouse, Human
Immunogen	Full length native protein (purified) corresponding to Human PANDER aa 1-235. Database link: NP_478066.3
Positive control	Mouse intestine lysate; PANDER transfected 293T cell line lysate
General notes	<p>The Life Science industry has been in the grips of a reproducibility crisis for a number of years. Abcam is leading the way in addressing this with our range of recombinant monoclonal antibodies and knockout edited cell lines for gold-standard validation. Please check that this product meets your needs before purchasing.</p> <p>If you have any questions, special requirements or concerns, please send us an inquiry and/or contact our Support team ahead of purchase. Recommended alternatives for this product can be found below, along with publications, customer reviews and Q&As</p>

Properties

Form	Liquid
Storage instructions	Shipped at 4°C. Upon delivery aliquot. Store at -20°C or -80°C. Avoid freeze / thaw cycle.
Storage buffer	pH: 7.40 Constituent: 100% PBS
Purity	Protein A purified
Clonality	Polyclonal
Isotype	IgG

Applications

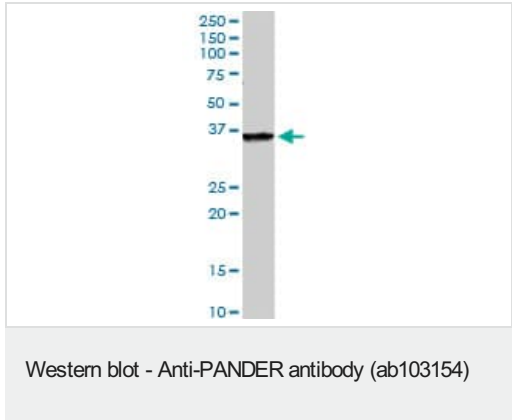
The Abpromise guarantee Our **[Abpromise guarantee](#)** covers the use of ab103154 in the following tested applications. The application notes include recommended starting dilutions; optimal dilutions/concentrations should be determined by the end user.

Application	Abreviews	Notes
WB		1/500 - 1/1000. Predicted molecular weight: 26 kDa.

Target

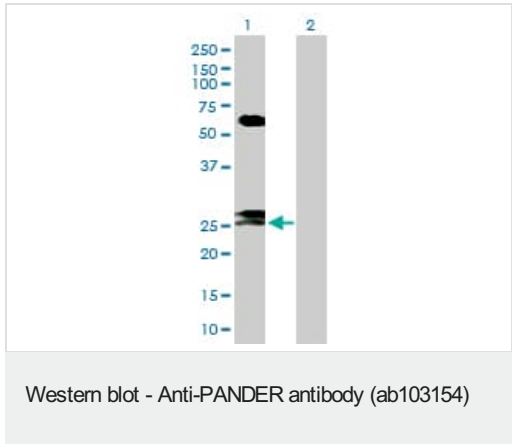
Function	Induces apoptosis of alpha and beta cells in a dose- and time-dependent manner. Present in insulin secretory granules and likely cosecreted with insulin.
Tissue specificity	Highly expressed in the pancreas. Also found in the colon, kidney, prostate, small intestine and testis.
Sequence similarities	Belongs to the FAM3 family.
Post-translational modifications	2 N-termini have been observed in the mature protein: the first at Glu-30, resulting from signal peptide cleavage, the second at Ser-46.
Cellular localization	Secreted. Localized in discrete vesicular and perinuclear structure.

Images



Anti-PANDER antibody (ab103154) at 1/500 dilution + Mouse intestine lysate at 50 µg

Predicted band size: 26 kDa



All lanes : Anti-PANDER antibody (ab103154) at 1/500 dilution

Lane 1 : PANDER transfected 293T cell line lysate

Lane 2 : Non-transfected 293T cell line lysate

Lysates/proteins at 25 µg per lane.

Predicted band size: 26 kDa

Please note: All products are "FOR RESEARCH USE ONLY. NOT FOR USE IN DIAGNOSTIC PROCEDURES"

Our Abpromise to you: Quality guaranteed and expert technical support

-
- Replacement or refund for products not performing as stated on the datasheet
 - Valid for 12 months from date of delivery
 - Response to your inquiry within 24 hours

 - We provide support in Chinese, English, French, German, Japanese and Spanish
 - Extensive multi-media technical resources to help you
 - We investigate all quality concerns to ensure our products perform to the highest standards

If the product does not perform as described on this datasheet, we will offer a refund or replacement. For full details of the Abpromise, please visit <https://www.abcam.com/abpromise> or contact our technical team.

Terms and conditions

- Guarantee only valid for products bought direct from Abcam or one of our authorized distributors